

CLASSIC TIMBER



NORDIC TIMBER PR40



MYSTIC TIMBER PR41

LAVISH CLAY



ADOBE CLAY PR44

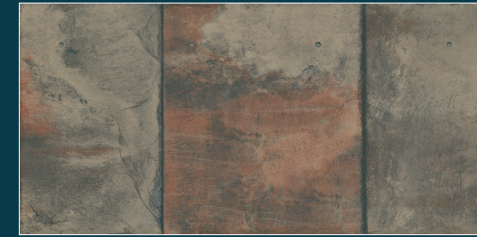
OPULENT SLATE



IMPRESSIONIST GREY SLATE PR42



ONYX SLATE PR45



ANTIQUE SLATE PR43

ROOF TILE – SIZES

Nominal Size	Actual Size	Thickness	Pieces/Square	Weight/Square	Pieces/Carton	Carton/Pallet
11 x 22 Roof Tile	(11-1/4" x 22-1/2") (28.60 cm x 57.20 cm)	STANDARD (8-9 mm)	77	601.00 Lbs.	10	32
11 x 22 Roof Tile	(11-1/4" x 22-1/2") (28.60 cm x 57.20 cm)	HD (12-13 mm)	77	743.00 Lbs.	7	32

TRIM – SIZES

	Thickness	Pieces/Carton
8 x 8 Hip/Ridge (15-3/4" x 15-3/4") (40.00 cm x 40.00 cm)	5/16"	9

SHADE VARIATION

Product	Variation
Adobe Clay Modern Clay Impressionist Grey Slate Onyx Slate	Medium (V2)
Nordic Timber Mystic Timber	High (V3)
Antique Slate	Random (V4)

TESTING/APPROVALS/CODES

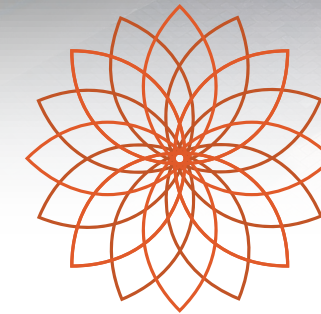
Test	STATUS
Class IV Hail [†]	Yes
ASTM 1167 Clay Tile	Yes
Class A Fire	Yes
ASTM C1549/Cool Roof Rating Council	Yes
ASTM G155- Xeon Arch Exposure [†]	Yes
TAS-100 Wind Driven Rain	Yes
SSTD 11-99 Overturn/Uplift Test	Yes
Florida Building Code	Yes
Miami Dade	Pending
Texas Department of Insurance	Pending

[†] On HD SKUs only

[†] Accelerated weather test, provides 75 years of aging; 1 year outdoor structure showed no signs of weathering.



Applicable for one transfer with registration in 60 Days. Valid for roofing tile only, labor not included. Recycled material not applicable.



daltile
PERENNIAL
PORCELAIN ROOFING™

designed to endure



MADE IN THE U.S.A.



REVEAL IMAGING®



PRE-CONSUMER RECYCLED MATERIALS



DESIGNED TO HELP EARN LEED™ CREDITS. For more detailed information, visit daltilegreenworks.com.



LEED

All or select items within this series meet the requirements for these qualifications. For more information visit daltile.com/roofing.





PERENNIAL PORCELAIN ROOFING™
COMPARISON CHART

TIMELESS STYLE. COMPETITIVE DESIGN.

See how Perennial Roofing stacks up against other products on the market. Spoiler alert: we win. ☑ = YES ✕ = NO – = SOME

Why is Perennial Porcelain Roofing tile the ideal material choice for new build or remodeled homes? Durability, beauty, and easy installation.

Made from only three natural ingredients - clay, sand, and feldspar - porcelain is synonymous with strength. It is resistant to scratches and abrasion, has very low water absorption (<0.5%), a high breaking strength, and it is resistant to stains, chemicals, and algae growth.

- Resistant to Frost
- Class A Fire Rating (Fire Resistant)
- Walkable
- High Breaking Strength
- Class IV Hail Impact Rating*
- Made In The U.S.A.
- Impervious to Water
- Fast & Easy Installation
- 110 mph Wind Rating
- Lifetime Limited Warranty
- Low Overall Weight†

We think roofing should never go unnoticed, but instead be an accent to the curb appeal of the home. With our patent pending Perennial Roofing tile design, every roof is crafted to endure the seasons.

Explore our carefully crafted assortment with selections inspired by elegant slate, classic wood shake and organic clay.

For more information visit daltille.com/roofing.

* On HD SKUs Only
 † Compared To Competitors

	PERENNIAL <small>(clay, sand and feldspar)</small>	Clay/Ceramic Tile	Concrete Tile	Traditional Slate	Synthetic/Plastic Shingles	Asphalt Shingles
MADE FROM NATURAL INGREDIENTS	☑	☑	–	☑	✕	✕
EASE OF INSTALLATION	☑	–	–	✕	☑	☑
NATURAL LOOK	☑	☑	–	☑	✕	✕
COLOR FASTNESS	☑	✕	✕	✕	–	–
LIFETIME LIMITED WARRANTY	☑	–	–	✕	✕	–
DIMENSIONAL STABILITY (WILL NOT WARP/CURL)	☑	☑	☑	☑	✕	✕
LIGHTWEIGHT <small>(8.5mm product <605 lbs/sq.)</small>	☑	✕	✕	✕	☑	☑
CLASS IV HAIL RATING (HIGHER BREAKING STRENGTH) <small>(HD product)</small>	☑	✕	– <small>(heavy)</small>	– <small>(heavy)</small>	–	–
FLAME RESISTANT	☑	☑	☑	☑	✕	–
COMBINATION OF PREMIUM PRODUCT AND AFFORDABLE PRICE	☑	✕	☑	✕	–	☑
MADE IN USA/COMPANY OWNED USA/LISTED NYSE/FORTUNE 500 COMPANY	☑	–	–	–	–	–
PRODUCT AVAILABILITY	☑	✕ <small>(lead-times as much as 14 weeks)</small>	✕ <small>(lead-times)</small>	✕ <small>(lead-times)</small>	☑	☑
LONGEST ROOF CYCLE COST	☑	☑	☑	☑	✕	✕
COLD CLIMATE SUITABLE	☑	✕ <small>(not usually)</small>	✕ <small>(not usually)</small>	☑	☑	☑
STAIN RESISTANT	☑	✕	✕	✕	☑	✕
CONS		<ul style="list-style-type: none"> • heavy • expensive • long lead times • not ideal for colder climates 	<ul style="list-style-type: none"> • heavy • fading colors • not a vibrant aesthetic • color options limited 	<ul style="list-style-type: none"> • expensive • heavy • difficult to install • Chinese slate and others warp, fade, change color • comes from a depleting natural resource which makes it harder to get the desired look • tough to match for repairs/remodels 	<ul style="list-style-type: none"> • does not appear "real" • plastic or shiny look • can be expensive - why pay premium price for plastic • not made from natural or "green" materials • can fade • can warp or curl 	<ul style="list-style-type: none"> • petroleum based product • not a premium look • potential for algae growth, color change, or staining

All or select items within this series meet the requirements for these qualifications. For more information visit daltille.com/roofing.

