





## APPLICATIONS

	Residential	Light Commercial	Commercial
Floors †	☑	☑	☑*
Walls/Backsplashes	☑	☑	☑
Countertops	☑	☑	☑
Pool Linings	☑	☑	☑

† Water, oil, grease etc. create slippery conditions. Floor applications with exposure to these conditions require extra caution in product selection. Not for use on ramps. For additional information, refer to "Factors to Consider" at [www.americanolean.com/ResidentialFactors](http://www.americanolean.com/ResidentialFactors).

- \* Nouveau, Light Polished and Ultratech, Polished finish are not suitable for commercial floor applications.
- Suitable for residential exterior floors and walls (excluding pool decks) in non-freezing climates when proper installation methods are followed. Unpolished finish only.

## PERFORMANCE CHARACTERISTICS

	C.O.F		Moisture Absorption	Breaking Strength	MOH's	Chemical Resistance
	Wet	Dry				
Avenue One™ 	≥0.60	≥0.70	<0.5%	>450 lbs.	8.0	Resistant
St. Germain™ 	≥0.60	≥0.70	<0.5%	>460 lbs.	8.0	Resistant
Nouveau™ (Unpolished) 	≥0.60	≥0.70	<0.5%	>450 lbs.	8.0	Resistant
Nouveau™ (Light Polished)	≥0.50	≥0.70	<0.5%	>450 lbs.	8.0	Resistant
Ultratech™ (Unpolished) 	≥0.60	≥0.70	<0.5%	>450 lbs.	8.0	Resistant
Ultratech™ (Polished)	≥0.50	≥0.70	<0.5%	>450 lbs.	8.0	Resistant

For more information on Test Results and Classifications, visit us at [www.americanolean.com/TestResults](http://www.americanolean.com/TestResults).

### CLEANING PROCEDURES

- Remove loose dust and dirt with a damp cloth or sponge
- Use a neutral, non-abrasive cleaner suitable for ceramic tile
- Remove cleaning solution with a clean, damp sponge or mop

### INSTALLATION METHODS

#### BACKING MATERIALS

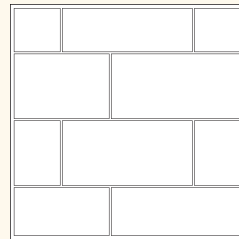
- Concrete
- Mortar bed
- Cementitious backer board

**Note:** Special care should be taken when grouting with dark pigmented colors. A grout release is recommended to prevent finely powdered pigments from lodging in the pores of the tile surface.

**Special installation requirement:** For proper bonding, medium bed mortar should be utilized in installing tiles with a dimensional length size greater than 20" x 20", large rectangles or tiles with a greater dimensional thickness than normal. Back buttering tiles of this nature in the installation process will also assure proper coverage for bonding.

Since there is shade variation in all fired ceramic products, the tile and trim supplied for your particular installation may not match these samples. Final selection should be made from actual tiles and trim and not from tile and trim samples or color reproductions.

## PATTERNS



### Staggered Brick Joint

300 pcs. per 100 s/f

2" x 24" 100%

155 pcs. per 100 s/f

4" x 24" 100%

103 pcs. per 100 s/f

6" x 24" 100%

Note: Overlap should not exceed 33%

## SHADE VARIATION



High (V3)  
Ultratech™



Medium (V2)  
St. Germain™,  
Avenue One™,  
Nouveau™

### SETTING

- Latex modified thinset
- Epoxy

### GROUTING

- Sanded grout
- Sanded cement grout
- Epoxy grout
- Recommended grout joint: 1/8", 3/16" when used in a staggered brickjoint pattern

Avenue One™ in Stilewalk 24" x 24" shown on floor, Avenue One™ Playground Sand in 2" x 24", 6" x 24" and Coffee Shop in 4" x 24" show on wall.

# LINEAR EXPRESS™

Linear Cutting Service

  
AMERICAN OLEAN™

With Linear Express™ you can think outside of the box. American Olean now has the capability to cut floor tile into linear or rectangular sizes for unique linear designs. With this service TruEdge (rectified) and non-rectified floor tiles may be cut with straight or beveled edges. Linear Express offers a wide variety of rectangular shapes, which can range from a minimum of 2" wide to a maximum of 24" long.

Please visit [www.americanolean.com](http://www.americanolean.com) for more information.



**AVENUE ONE™**  
ColorBody Porcelain Tile



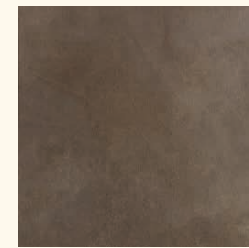
Streetlamp AU01



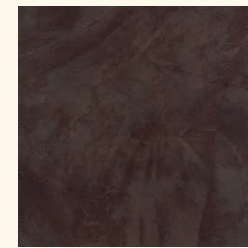
Sidewalk AU02



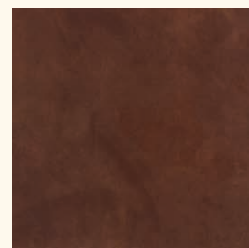
Playground Sand AU03



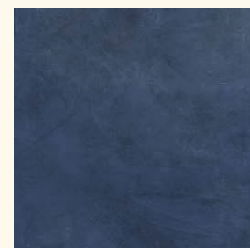
Brownstone AU04



Coffee Shop AU05



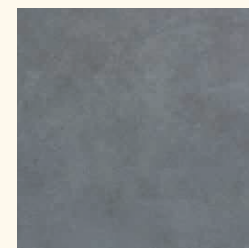
Designer Leather AU06



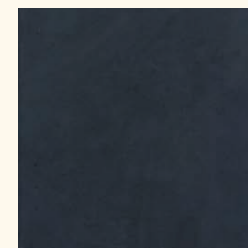
Midnight Sky AU07



Municipal Gray AU08



Nightlife AU09



Blackout AU10

**ST. GERMAIN™**  
ColorBody Porcelain Tile



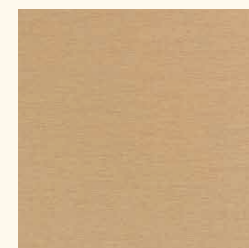
Blanc SE60



Creme SE61



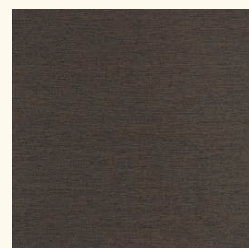
Chenile SE62



Or SE63



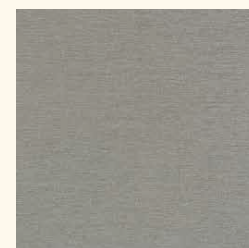
Sable SE64



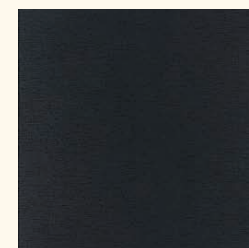
Chocolat SE65



Sage SE66

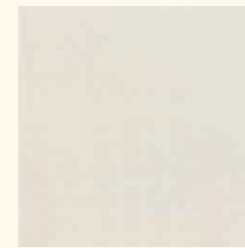


Gris SE67

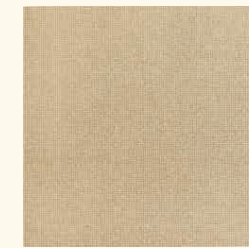


Noir SE68

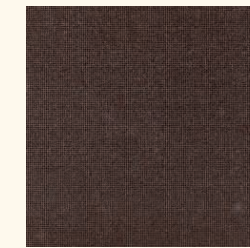
**NOUVEAU™**  
ColorBody Porcelain Tile



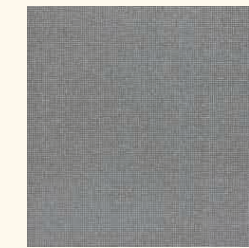
Exposition White NV80



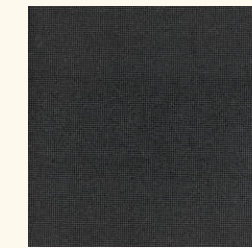
Luminary Gold NV81



Artisan Brown NV82



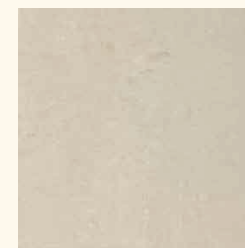
Industrial Gray NV83



Abstract Black NV84

Available in light polished and unpolished surface.

**ULTRATECH™**  
ColorBody Porcelain Tile



Spectral White J020



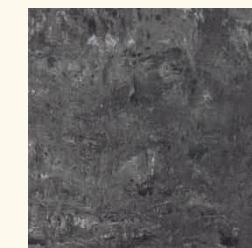
Dimensional Beige J021



Harmonic Brown J022



Gray Scale J023



Chromatic Carbon J024

Available in polished and unpolished surface.

**SIZES**

	2" x 24" Field Tile	4" x 24" Field Tile	6" x 24" Field Tile
<b>Avenue One™</b>	(2" x 23 1/2" nominal) (4.67 cm x 59.8 cm nominal)	(4" x 23 1/2" nominal) (9.73 cm x 59.8 cm nominal)	(6" x 23 1/2" nominal) (14.63 cm x 59.5 cm nominal)
<b>St. Germain™</b>	(2" x 24" nominal) (4.67 cm x 60.0 cm nominal)	(4" x 24" nominal) (9.73 cm x 60.0 cm nominal)	(6" x 24" nominal) (14.63 cm x 60.0 cm nominal)
<b>Nouveau™</b>	(2" x 23 1/2" nominal) (4.67 cm x 59.7 cm nominal)	(4" x 23 1/2" nominal) (9.73 cm x 59.7 cm nominal)	(6" x 23 1/2" nominal) (14.63 cm x 59.7 cm nominal)
<b>Ultratech™</b>	(2" x 23 3/8" nominal) (4.67 cm x 59.4 cm nominal)	(4" x 23 3/8" nominal) (9.73 cm x 59.4 cm nominal)	(6" x 23 3/8" nominal) (14.63 cm x 59.4 cm nominal)



Each tile is rectified, which allows for the use of smaller grout joints.

Tile Thickness: 3/8"