

ENTOURAGE™
RENEWAL™
GLASS



Photo features Renewal Sea Pearl 3" Block mosaic and Sea Pearl Chain-linked mosaic on the wall.

3" BLOCK GLASS MOSAIC



SEA PEARL BLEND
C128



WILLOW BROOK BLEND
C129



BLUE MOON BLEND
C130



EARTH FIRE BLEND
C131



PECAN GROVE BLEND
C132



SAND STORM BLEND
C133

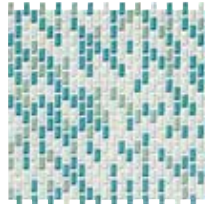


SILVER SPRING BLEND
C134

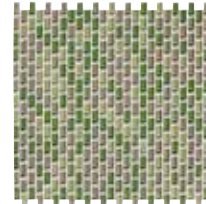


MIDNIGHT SKY BLEND
C135

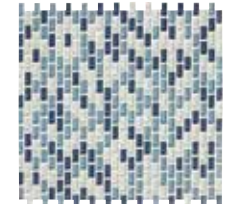
CHAIN-LINKED GLASS MOSAIC



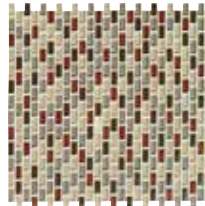
SEA PEARL BLEND
C128



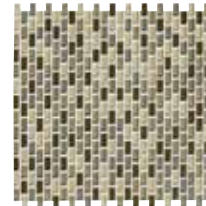
WILLOW BROOK BLEND
C129



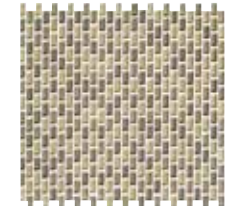
BLUE MOON BLEND
C130



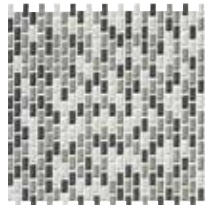
EARTH FIRE BLEND
C131



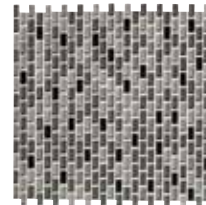
PECAN GROVE BLEND
C132



SAND STORM BLEND
C133



SILVER SPRING BLEND
C134



MIDNIGHT SKY BLEND
C135

SIZES

			THICKNESS	SQ. FT./ CARTON	PIECES/ CARTON
	3" Block Glass Mosaic ■	11-3/4" x 11-3/4" Sheet (29.80 cm x 29.80 cm Sheet)	5/16"	10.00	10
	Chain-Linked Glass Mosaic ■	11-1/8" x 12-1/4" Sheet (28.20 cm x 31.00 cm Sheet)	5/16"	10.00	10

■ Mesh-mounted

INSTALLATION & PRICING

RECOMMENDED GROUT JOINT:

Mosaic: 1/8"

RELATIVE PRICING: High

SHADE VARIATION



PERFORMANCE CHARACTERISTICS

	ASTM#	MOSAIC RESULT
Water Absorption	C373	< 0.5%
Breaking Strength	C648	> 100 lbs.
Scratch Hardness	MOHS	4.0
Chemical Resistance	C650	Resistant
Abrasion Resistance	C1027	N/A

For additional information on test results, visit us at: americanolean.com/information/TestResults.

USAGE

FLOORS	WALLS	COUNTERTOPS

APPLICATIONS

	TARGET DCOF WET	SUITABLE
Dry & Level – Interior Floor	N/A	
Wet & Level – Interior Floor	≥ 0.42	
Shower Floors (Residential or Light Commercial)	≥ 0.42	
Exterior Floor Applications (including pool decking & other wet areas with minimal footwear)	≥ 0.60	
Ramps & Inclines	≥ 0.65	
Walls/Backsplashes	N/A	
Countertops	N/A	
Pool Linings	N/A	

A DCOF value of ≥0.42 is the standard for tiles specified for level interior spaces expected to be walked upon when wet, as stated in ANSI A137.1-A326.3. For more information about DCOF and the DCOF AcuTest™, visit americanolean.com/DCOF.

APPLICATION NOTES:

Suitable for exterior applications in freezing and non-freezing climates, when proper installation methods are followed.

NOTES

For additional information refer to "Factors to Consider" at: americanolean.com/Factors.

Random visuals enhance the natural beauty of this product. To achieve optimal results, all tile should be selected from multiple cartons and shading and graphic arrangement planned prior to installation.

Since there are variations in all glass products, tile and trim supplied for your particular installation may not match samples. Final confirmation should be made from actual tiles and trim prior to installation. Manufactured in accordance with ANSI A137.2 standards.

Use of a white latex modified thin-set is recommended for installation.