

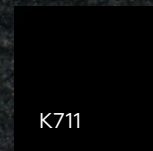
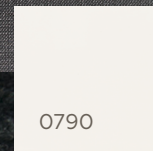
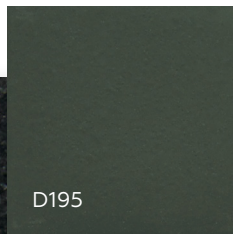
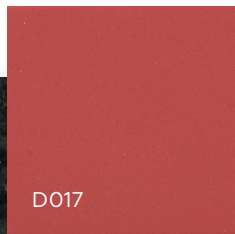


CASE STUDY

MISTY MILL

TILE, COUNTERTOPS & WALL

 daltile®
IMAGINE WHAT'S POSSIBLE™



Q006

CASE STUDY

MISTY MILL

TILE, COUNTERTOPS & WALL



MISTY MILL: CHIP WADE'S TRANSFORMATIVE REMODEL OF HISTORIC LAKE HOME

In partnership with House Beautiful, HGTV star and DIY experts Chip and Pauli Wade undertook a complete remodel of Misty Mill, a historic 19th century lake house in Milledgeville, Georgia. The Wades' creativity and skill are on full display with these before & after photos of the kitchen, 3 bathrooms, and mudroom. DalTile is proud to help define the design with versatile tile and countertop products.

Gorgeous quartzite on the countertops in the kitchen were a choice of both durability and design. An understated marblesque look with the hardness and resistance of granite, make this the perfect choice for a busy kitchen.



CASE STUDY

MISTY MILL

TILE, COUNTERTOPS & WALL



KITCHEN BACKSPLASH

A custom mosaic backsplash with Keystones series and classic quartzite countertops give this large kitchen charm and personality.

BEFORE



AFTER



CASE STUDY

MISTY MILL

TILE, COUNTERTOPS & WALL



MASTER BATHROOM

Blue and white hexagon mosaic arranged in a custom geometric design in the master bathroom was guided by a sense of playful luxury and functionality that does not sacrifice the natural perks of the space. Large-scale Panoramic Porcelain completes the design with seamless style.

BEFORE



AFTER



CASE STUDY

MISTY MILL

TILE, COUNTERTOPS & WALL



FIRST FLOOR BATHROOM

Modern design in black, white and grey with mid-century industrial details set apart the first floor bathroom. The clean-lined space feels much more open and inviting and is softened by textured fabric look tile on the floor.

BEFORE



AFTER



CASE STUDY

MISTY MILL

TILE, COUNTERTOPS & WALL



FOYER BATHROOM

Modern and bold, the foyer bath combined black and white hexagon mosaic tile and classic white subway tile with accents of red for a statement bathroom to wow guests. The former patio door was converted into an indoor/outdoor shower.

BEFORE



AFTER



MUDROOM

Tile rugs are a popular way to boost design with personal customization as well as introduce a touch of classic geometric patterns in a durable tile that is easy to clean and maintain.

BEFORE



AFTER



CASE STUDY
MISTY MILL
TILE, COUNTERTOPS & WALL



TO LEARN MORE ABOUT DALTILE'S FULL PRODUCT OFFERING – OR TO FIND A SHOWROOM NEAR YOU – VISIT US ONLINE AT [DALTILE.COM](https://www.daltile.com).

FOLLOW DALTILE:

