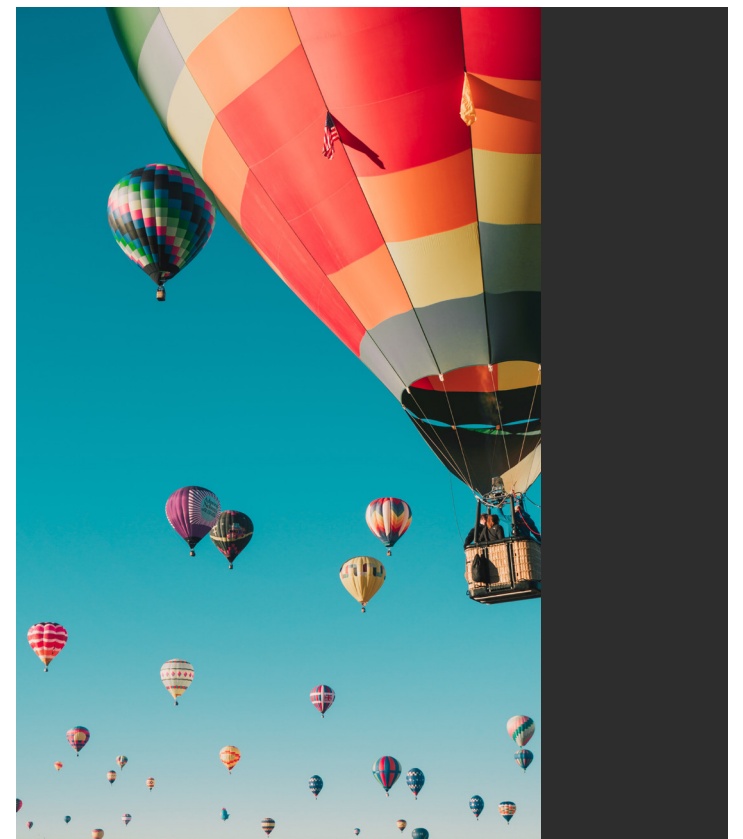
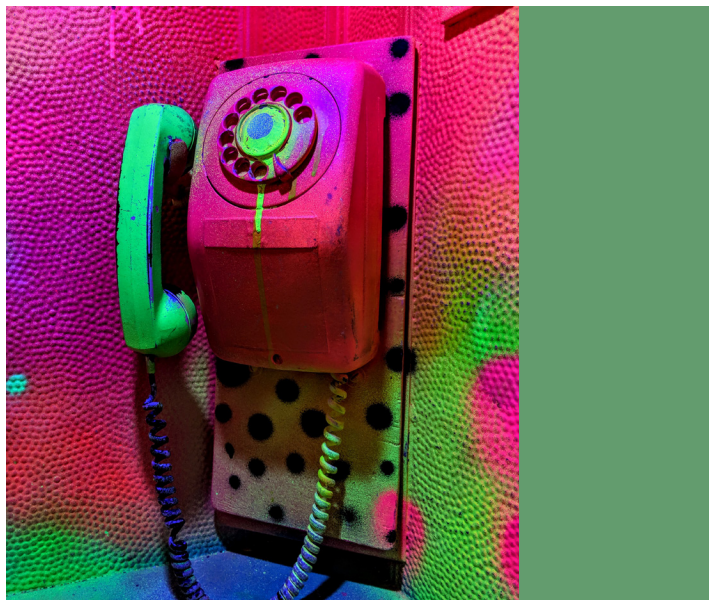
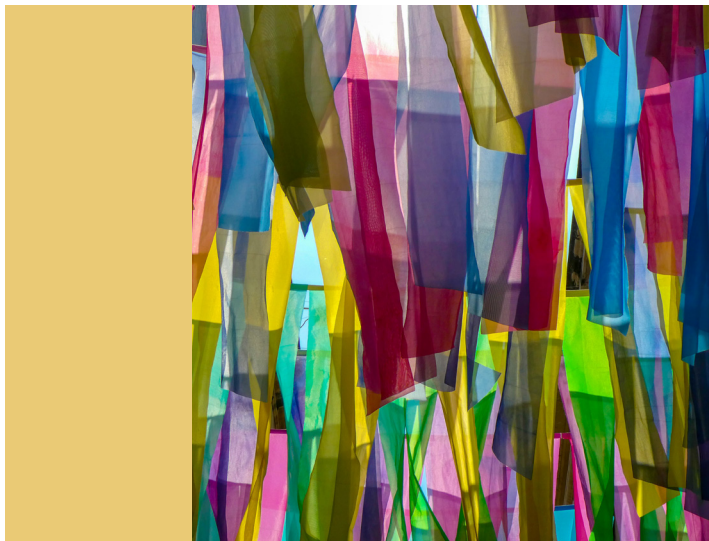


# Self Expressionism





# SELF EXPRESSIONISM

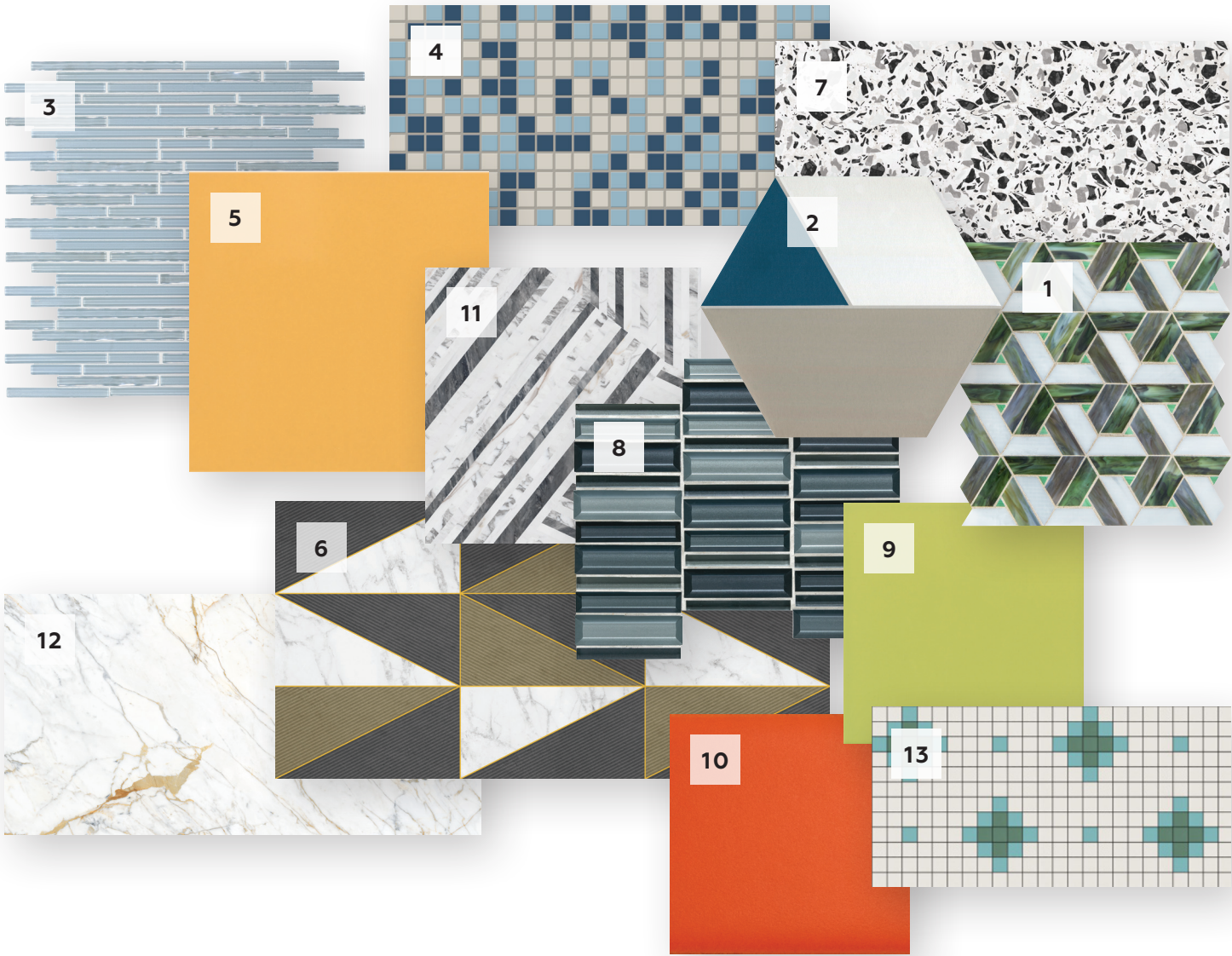
Self-Expressionism is about expressing our inner selves, tastes, memories and identities through interior design and decor.

As we spent concentrated time at home due to the pandemic, we began turning to our homes even more as an outlet for creativity and self-expression. We are now well-entrenched in the trend of enjoying DIY projects to create new stories, keep our creativity alive and remain positive.

In the trend of Self-Expressionism, there is no wrong design solution. Personal preference and what makes a space feel good to each individual are the guiding principles.



# TREND *tile*



## TILE IN TREND SELECTIONS

- |   |   |
|---|---|
| 1. Vivify™ Enchanted Green VF02                     | 8. Cascading Waters™ Cerulean Swell CW45            |
| 2. Bee Hive™ Medley Blue Taupe P045                 | 9. Color Wheel™ Classic Key Lime 1098               |
| 3. Opulence™ Aquamarine OP02                        | 10. ColorMatch™ Matte Saffron 09                    |
| 4. Keystones™ Berry DK24                            | 11. Marble Attaché™ Lavish Entranced Deco MA75      |
| 5. Color Wheel™ Mosaic Mustard 1012                 | 12. Panoramic Porcelain Surfaces™ Diamond Mine CM12 |
| 6. Panoramic Porcelain Surfaces™ Vector Gold CM62   | 13. Special Order Program – Custom Mosaic Tool      |
| 7. Panoramic Porcelain Surfaces™ Urban Farrago CM67 |   |