

**WOOD  
 LOOK**

**USAGE**

-  FLOOR
-  WALL
-  COUNTERTOP
-  SHOWER FLOOR
-  EXTERIOR FLOOR
-  STEPWISE™
-  TRU-EDGE™
-  MADE IN THE U.S.A.
-  LARGE FORMAT
-  MOSAIC/DECO
-  ENCAUSTIC
-  TERRAZZO
-  PAVER
-  CUSTOMIZE
-  FLEXFIT™

**SPECIAL FEATURES**



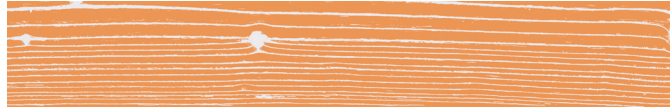
NOT APPLICABLE FOR ALL PRODUCTS IN THIS SERIES. SEE CHARTS FOR FULL PRODUCT DETAILS.

SIZES:

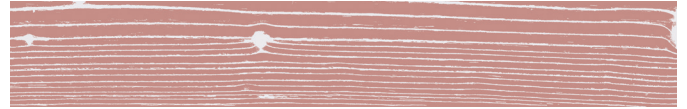


FINISHES: MATTE

**COLORBODY™ PORCELAIN – WHITE POSITIVE**



ARANCIO 2273



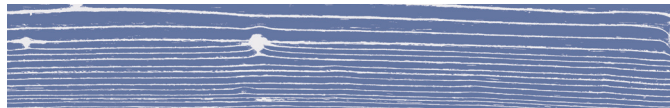
ROSA 2307



AZZURRO 2278



VERDE 1 2317



BLU 2286



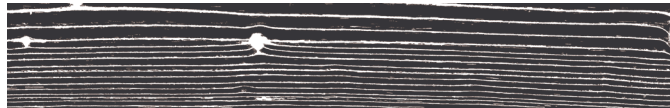
VERDE 3 2325



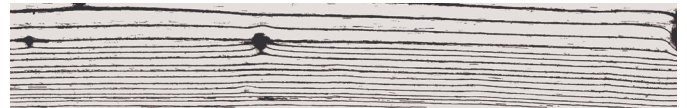
GIALLO 2290



VIOLA 1 2329



NERO POSITIVE 2303



NERO NEGATIVE 2302

**COLORBODY™ PORCELAIN – THE SOFT**



AVORIO 2274



MOKA 2299



PERLA 2312



TORTORA 2313



GOLD 2255



SLIP RESISTANT



WATERPROOF



STAINPROOF



DENTPROOF



SCRATCH-RESISTANT™

\*Applicable to products with Matte and Textured Finishes



FIRE-RESISTANT™

\*Not Applicable to Mesh-Mounted Hoses




CLIMATEPRO™



SIMPLICLEAN™

SIZES

			Thickness	Sq. Ft./ Carton	Pieces/ Carton
	8 x 48 Floor Tile	(8" x 48") (200 mm x 1200 mm)	3/8"	10.33	4

APPLICATIONS

	Target DCOF wet	Suitable
Dry & Level – Interior Floor	N/A	✓
Wet & Level – Interior Floor	≥ 0.42	✓
Shower Floors (Residential or Light Commercial)	≥ 0.42	
Exterior Floor Applications (including patios, pool decking & other wet areas with minimal footwear)	≥ 0.60	
Ramps & Inclines	≥ 0.65	
Walls/Backsplashes	N/A	✓
Countertops	N/A	✓
Pool Linings	N/A	

A DCOF value of ≥0.42 is the standard for tiles specified for level interior spaces expected to be walked upon when wet, as stated in ANSI A137.1-A326.3. For more information about DCOF and the DCOF AcuTest™, visit [daltile.com/DCOF](http://daltile.com/DCOF).

APPLICATION NOTES:

Suitable for exterior applications (provided it is noted as suitable in the applications chart above) in non-freezing climates, when proper installation methods are followed.

INSTALLATION

Grout Joint Recommendation	Shade Variation
1/8"	 Random (V4)

PERFORMANCE CHARACTERISTICS

	ASTM#	Result
Water Absorption	C373	< 0.5%
Breaking Strength	C648	> 275 lbs
Scratch Hardness	MOHS	7.0
Chemical Resistance	C650	Resistant

For additional information on test results, visit us at: [daltile.com/information/TestResults](http://daltile.com/information/TestResults).

DURABILITY

Floor Surface Wear Resistance

1	Residential Bathrooms	3	All Residential / Light Commercial
2	All Residential Areas	④	All Residential / Commercial

NOTES

Since there are variations in all fired ceramic and natural products, tile and trim supplied for your particular installation may not match samples. Final confirmation should be made from actual tiles and trim prior to installation. Manufactured in accordance with ANSI A137.1 standards.

To achieve optimal results, all tile should be selected from multiple cartons and shading and graphic arrangement planned prior to installation.

Water, oil, grease, improper drainage and certain footwear can create slippery conditions. Floor applications expected to be exposed to these conditions require extra caution in product selection.

For additional information refer to "Factors to Consider" at: [daltile.com/Factors](http://daltile.com/Factors).

Special consideration needs to be given when installing tiles greater than 15 inches. Please refer to [daltile.com/LargeTiles](http://daltile.com/LargeTiles) for more information.

Special care should be taken when grouting with dark pigmented colors. A grout release is recommended to prevent finely powdered pigments from lodging in the pores of the surface. Use of a latex TRIM modified thin-set is recommended for installation