

FLOOR

TORREON™

COLORBODY™ PORCELAIN



FLOOR TILE



CLOUD TN95



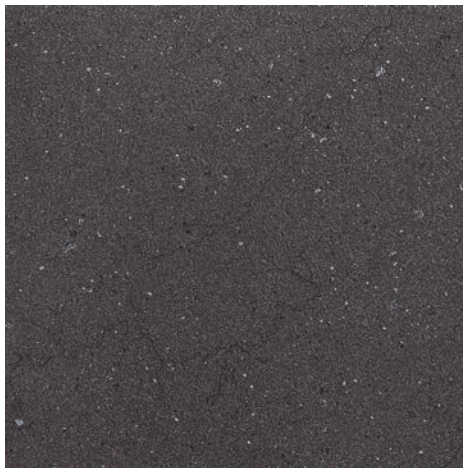
BRINO TN98



TORTORA TN96



CACAO TN97



COAL TN99



POST-CONSUMER
RECYCLED MATERIALS



PRE-CONSUMER
RECYCLED MATERIALS



MADE IN THE U.S.A.



TRU-EDGE

All or select items within this series meet the requirements for these qualifications. For more product information, visit daltile.com.



IMAGINE WHAT'S POSSIBLE™



©2017 Daltile (2/17)

TORREON™

COLORBODY™ PORCELAIN



SIZES

			Thickness	Sq. Ft. per Carton	Pieces per Carton
	12 x 24 Floor Tile	(11-5/8" x 23-3/8") (29.56 cm x 59.44 cm)	3/8"	15.12	8
	12 x 12 Floor Tile	(11-5/8" x 11-5/8") (29.56 cm x 29.56 cm)	3/8"	12.09	11

FLOOR APPLICATIONS

	Target DCOF wet	Suitable
Dry & Level – Interior	N/A	✓
Wet & Level – Interior	≥ 0.42	✓
Exterior Applications; pool decking & other wet areas with minimal footwear	≥ 0.60	
Ramps & Inclines	≥ 0.65	

A DCOF value of ≥ 0.42 is the standard for tiles specified for level interior spaces expected to be walked upon when wet, as stated in ANSI A137.1-2012, Section 9.6. For more information about DCOF and the DCOF AcuTest™, visit daltile.com/DCOF.


OTHER APPLICATIONS

	Suitable
Walls/Backsplashes	✓
Countertops	✓
Pool Linings	

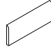
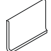

APPLICATION NOTES:

Suitable for exterior applications in freezing and non-freezing climates only when proper installation methods are followed.

INSTALLATION

Grout Joint Recommendation	Shade Variation
1/8" (3/16" when installing tile with a length 15" or greater in a staggered brick-joint pattern; overlap should not exceed 33%)	 Medium (V2)

TRIM

	Type	Number	Size	Pieces per Carton
	Bullnose	S-43C9	3 x 12	30
	Cove Base	S-36C9T	6 x 12	22
	Cover Base Outcorner	SC-36C9T	1 x 6	15

Bullnose, cove base and cove base corner trim are intended to coordinate with floor tile in the standard 90-degree installation position.

Cove base and cove base outcorner trim are clay body ceramic suitable for exterior applications in non-freezing climates only.

TEST RESULTS

	ASTM#	Result
Water Absorption	C373	< 0.5%
Breaking Strength	C648	> 275 lbs
Scratch Hardness	MOHS	8.0
Chemical Resistance	C650	Resistant

NOTES

Special consideration must be given when installing tiles greater than 15 inches. Please refer to daltile.com/LargeTiles for more information.

Special care should be taken when grouting with dark pigmented colors. A grout release is recommended to prevent finely powdered pigments from lodging in the pores of the surface. Use of a latex modified thin-set is recommended for installation.

Since there are variations in all fired ceramic products, tile and trim supplied for your particular installation may not match these samples. Final color selection should be made from actual tiles and trim and not from tile samples or color reproductions. Manufactured in accordance with ANSI A137.1 standards.

Water, oil, grease, etc. create slippery conditions. Floor applications with exposure to these conditions require extra caution in product selection. Not for use on ramps.

For additional information, refer to "Factors to Consider" at daltile.com/Factors.



DESIGNED TO HELP EARN LEED™ CREDITS. For more detailed information, visit daltilegreenworks.com.



SCAN QR CODE FOR PRODUCT INFORMATION

Get a QR Code reader at: GET.DAL TILE.COM



7834 C. F. Hawn Freeway, Dallas, Texas 75217 | 1.800.933.TILE

To view the complete collection of Daltile® products and information, visit our website at daltile.com.



©2017 Daltile (2/17)