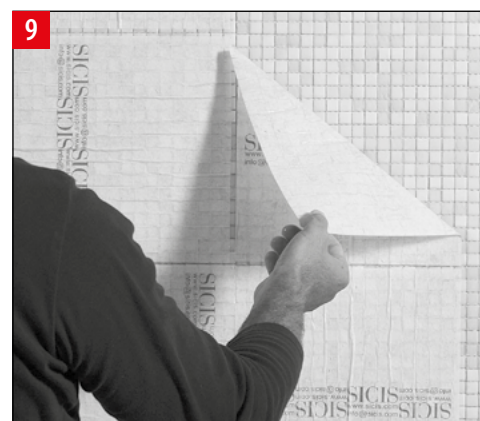
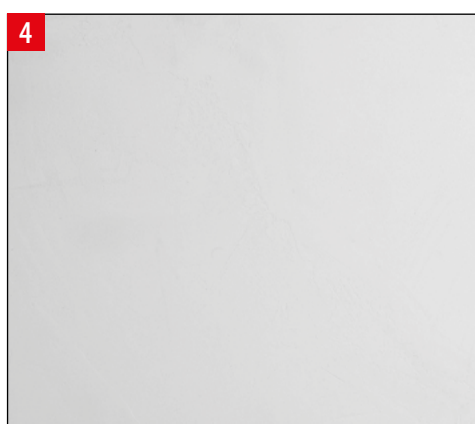
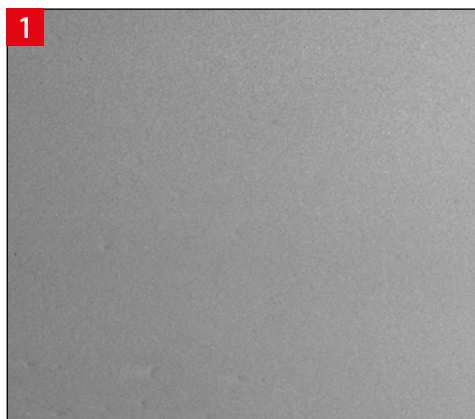


PAPER-MOUNTED MOSAIC

LAYING SCHEME



KEEP DRY

More accurate information can be acquired by our web-site

SICIS

Please refer to City Lights Product Catalog for specific information on the type of adhesive to use linked to the type of application, in some cases epoxy adhesives and grouts can only be used for certain products.

LAYING OPERATIONS

- (1)** Before beginning the laying, check that the surface is clean, free of imperfections and white.
 - (2) (3)** Should one of these conditions be absent, proceed with a light shaving (mm 1 – 1,5) of the whole surface: use only white selected adhesive and spread it with the straight edge of the spatula.
- Once the adhesive is set **(4)** you can begin gluing the mosaic sheets, by spreading a further layer of white glue and working First with the toothed edge of the spatula (2mm teeth) **(5)** and then with the straight edge making sure that the layer of glue is perfectly flat and without harshness that would be visible due to glass mosaic's transparency.
- (6)** Place the mosaic sheets on the fresh glue taking care to leave the side covered by the paper facing upwards so that it can be easily removed later.
 - (7)** Check the correct alignment of the grooves so to avoid unevenness and the visibility of the single sheets instead of a continuous surface of mosaic tesserae.
 - (8)** Check the setting of the glue and proceed with the removal of the paper by wetting it with lukewarm water using a sponge.
 - (9)** Remove the wet paper with your fingers starting from a corner.
 - (10)** Fill the grooves between the tesserae with an appropriate sealant using a plastic spatula with a straight edge.
 - (11)** Right after the puttying clean the surface with a wet sponge.
 - (12)** Clean the tesserae until every excess of sealant has been removed.

KEEP DRY