

MADE TO ORDER PROGRAM

COLORMATCH™



GLAZED CERAMIC

 daltile®



COLORMATCH™

SPECIAL ORDER GLAZED CERAMIC WALL & MOSAICS



WHY COLORMATCH?

The 21 ColorMatch colors in Wall Tile & Mosaics are inspired from the 21 Natural Hues Core Colors.

Still looking for a special color? We can do custom colors, discontinued colors or existing colors in another finish. These are all considered custom colors.

WHAT IS THE PROCESS TO DEVELOP A CUSTOM COLOR?

Our Lab will produce an Approval Sample based on your target color submittal which can include tile, pantone color or paint chip.

The Lab Approval Sample will be produced on 3x6 for wall tile or 2x2 chip for mosaics – there is no charge for this service.

Minimum order quantity is 500 SF. per custom color.

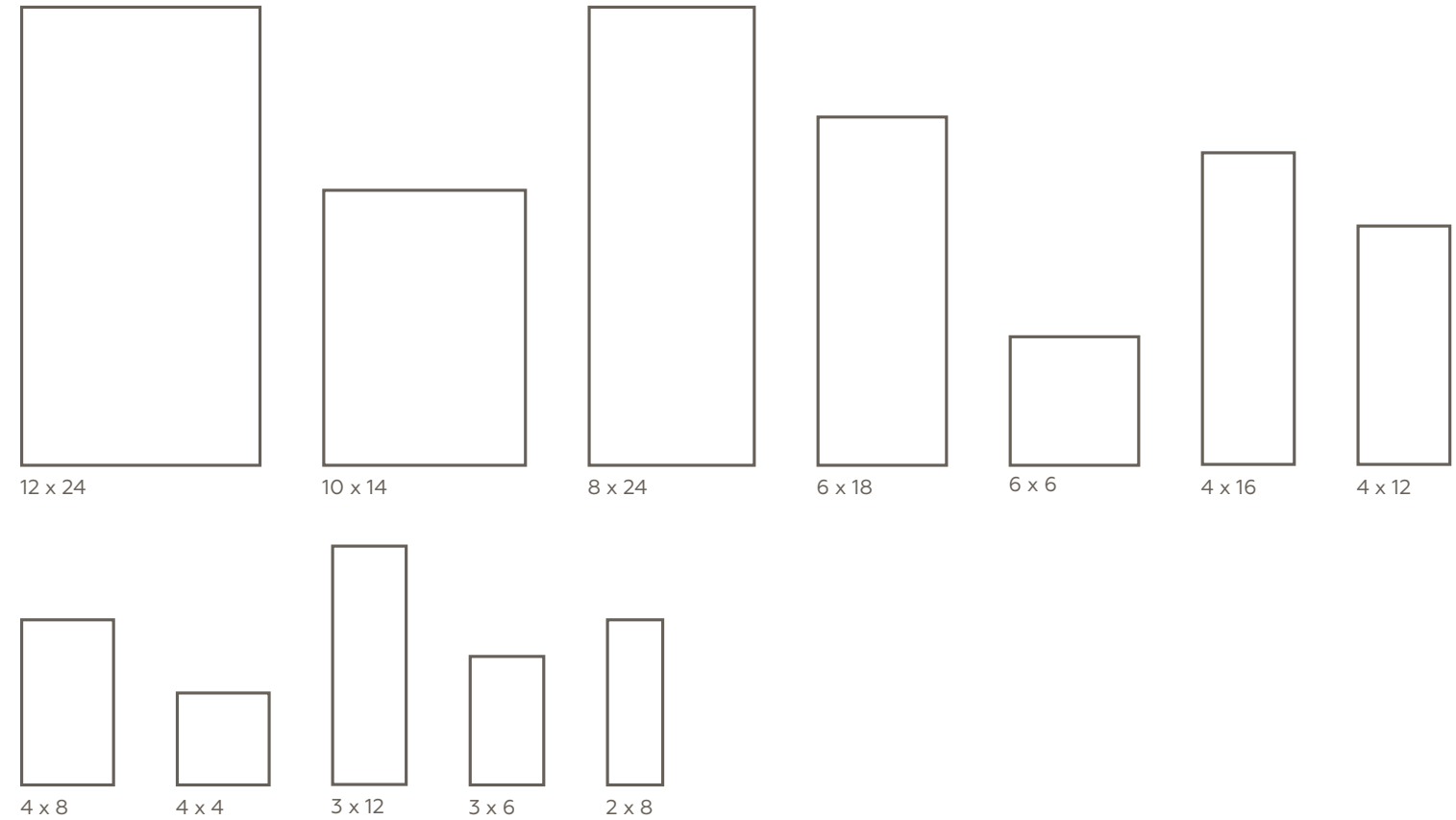
Contact your sales representative for all Custom Color development.

COLORMATCH™

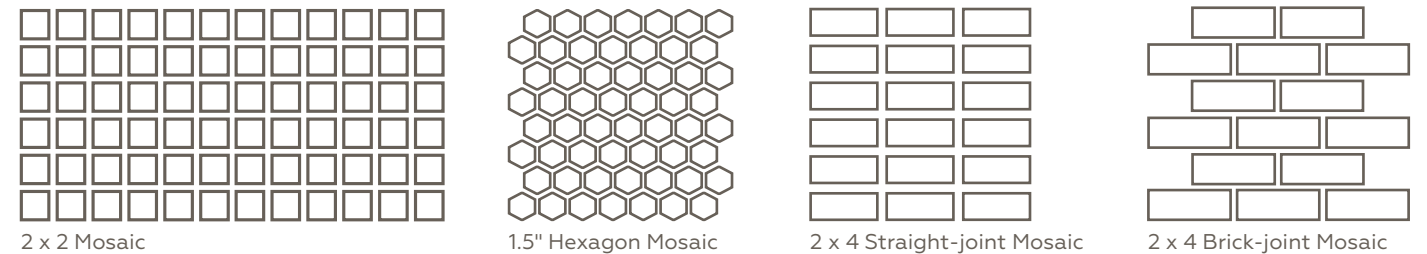
GLAZED CERAMIC WALL & MOSAIC

Make any design come to life with ColorMatch! We can create a wall or mosaic tile color to match any item you choose. Custom ColorMatch is available in Semi-gloss and Matte finishes and in more colors than you could ever imagine!

WALL TILE – SIZES

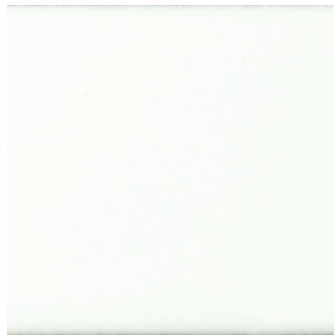


MOSAIC – SIZES*



*ColorMatch Mosaics can be ordered in patterns and blends on a made to order basis.

COLOR PALETTE



GLOSSY CARNATION
CU48



MATTE PEARL WHITE
CU63



MATTE CARRARA
CU33



MATTE MUSHROOM
CU16



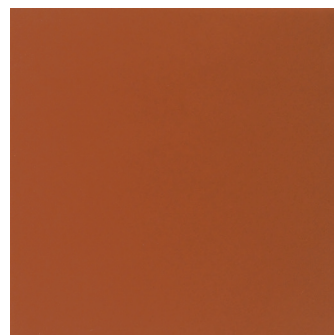
MATTE DAISY
CU97



MATTE MANGO
CU71



GLOSSY VALENTINE
CU13



MATTE TUSCANY
CU74



MATTE BURGUNDY
CU47



MATTE BLUEBERRY
CU46



MATTE ATLANTIS
CU43



MATTE PACIFIC
CU61

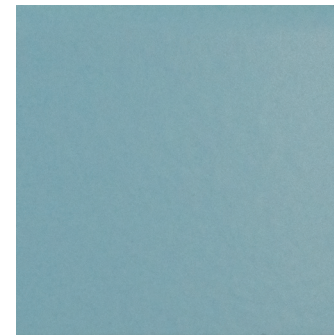
COLOR PALETTE



MATTE AZURE
CU44



MATTE STARLIGHT
CU68



MATTE ICEBERG
CU82



MATTE REAL TEAL
CU66



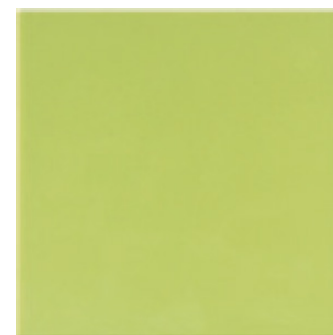
MATTE IRELAND
CU34



MATTE RAIN
CU22



MATTE FERN
CU80



MATTE KIWI
CU30



MATTE ARTICHOKE
CU12

SIZES		Thickness	Sq. Ft./ Carton	Pieces/ Carton	
	12 x 24 Wall Tile	(12" x 24") (30.51 cm x 61.08 cm)	3/8" (9.30 mm)	16.00	8
	10 x 14 Wall Tile	(9-13/16" x 13-15/16") (24.99 cm x 35.43 cm)	5/16" (7.60 mm)	14.29	15
	8 x 24 Wall Tile	(8" x 24") (20.34 cm x 61.03 cm)	3/8" (9.30 mm)	13.30	10
	6 x 18 Wall Tile	(6" x 18") (15.26 cm x 45.77 cm)	3/8" (9.30 mm)	11.25	15
	6 x 6 Wall Tile	(6" x 6") (15.20 cm x 15.20 cm)	5/16" (7.90 mm)	12.50	50
	4 x 16 Wall Tile	(4" x 16") (10.17 cm x 40.69 cm)	3/8" (9.30 mm)	13.20	30
	4 x 12 Wall Tile	(4-1/4" x 12-7/8") (10.91 cm x 32.77 cm)	5/16" (7.90 mm)	10.64	28
	4 x 8 Wall Tile	(4-1/4" x 8-9/16") (10.91 cm x 21.82 cm)	5/16" (7.90 mm)	10.63	42
	4 x 4 Wall Tile	(4-1/4" x 4-1/4") (10.80 cm x 10.80 cm)	5/16" (7.90 mm)	12.50	100
	3 x 12 Wall Tile	(3" x 12") (7.65 cm x 30.70 cm)	5/16" (7.90 mm)	12.00	48
	3 x 6 Wall Tile	(3" x 6") (7.60 cm x 15.20 cm)	5/16" (7.90 mm)	12.50	100
	2 x 8 Wall Tile	(2-1/8" x 8-9/16") (5.45 cm x 21.82 cm)	5/16" (7.9 mm)	10.40	80
	2 x 2 Mosaic (Dot-mounted)	(12" x 24" Sheet) (30.48 cm x 60.96 cm)	1/4" (6 mm)	24.00	12
	1.5" Hexagon Mosaic (Dot-mounted)	(11-5/8" x 10-1/4" Sheet) (29.53 cm x 26.04 cm)	1/4" (6 mm)	9.72	12
	2 x 4 Straight-joint Mosaic (Dot-mounted)	(12" x 12" Sheet) (30.48 cm x 30.48 cm)	1/4" (6 mm)	10	10
	2 x 4 Brick-joint Mosaic (Dot-mounted)	(12" x 12" Sheet) (30.48 cm x 30.48 cm)	1/4" (6 mm)	9.96	12


APPLICATIONS	Target DCOF wet	Suitable
Dry & Level – Interior Floor	N/A	✓***
Wet & Level – Interior Floor	≥ 0.42	✓***
Shower Floors – Standard Center Drain (Residential or Light Commercial)	≥ 0.42	✓***
Shower Floors – Linear Drain	> 0.60	
Exterior Floor Applications, (including patios, pool decking & other wet areas with minimal footwear)	≥ 0.60	
Ramps & Inclines	≥ 0.65	
Walls/Backsplashes	N/A	✓
Countertops	N/A	✓*
Pool Linings	N/A	✓**

A DCOF value of ≥0.42 is the standard for tiles specified for level interior spaces expected to be walked upon when wet, as stated in ANSI A137.1-A326.3. For more information about DCOF and the DCOF AcuTest™, visit daltille.com/DCOF.

APPLICATION NOTES :
Suitable for exterior applications (provided it is noted as suitable in the applications chart above) in non-freezing climates, when proper installation methods are followed.
* 3 x 6, 4 x 4, 6 x 6 and mosaic tile in matte colors only and all sink rails.
Darker colors may show scratches
** 3 x 6, 4 x 4, 6 x 6, liners and mosaic tile only.
*** Matte Mosaic tile only.

PERFORMANCE CHARACTERISTICS	ASTM#	Wall Result	Mosaic (Glossy) Result	Mosaic (Matte) Result
Water Absorption	C373	< 20.0%	< 3.0%	< 3.0%
Breaking Strength	C648	120-230 lbs	> 250 lbs	> 250 lbs
Scratch Hardness	MOHS	4.0-6.0	4.0 - 6.0	8.0
Chemical Resistance	C650	Resistant	Resistant	Resistant

For additional information on test results, visit us at: daltille.com/information/TestResults.

INSTALLATION	Grout Joint Recommendation	Shade Variation
12 x 24, 8 x 24, 6 x 18 & 4 x 16: 1/16" (1/8" when rectangular size is installed in a staggered brick-joint pattern; overlap should not exceed 33%.)		
10 x 14, 4 x 8, 6 x 6, 3 x 6 & 4 x 4: 1/16"		 Low (V1)
4 x 12, 3 x 12, & 2 x 8: 1/16" (When rectangular size is installed in a staggered brick-joint pattern, overlap should not exceed 33%.)		
Mosaic: 1/8"		

DURABILITY	Floor Surface Wear Resistance
1 Residential Bathrooms	③ All Residential / Light Commercial*
2 All Residential Areas	4 All Residential / Commercial

* Matte mosaics only.

TRIM USAGE WITH TILE	12 x 24	10 x 14	8 x 24	6 x 18	6 x 6	4 x 16
Jolly	S1/212J	S1/212J	S1/212J	S1/212J	S1/212J	S1/212J
Quarter Round	A106	A106	A106	A106	A106	A106
Quarter Round Corner	AC106	AC106	AC106	AC106	AC106	AC106
SURFACE BULLNOSE						
Bullnose					S4669	S44D9
Corner					SCRL4669	SN44D9
Bullnose					S4269	
Corner					SN4269	
RADIUS BULLNOSE						
Bullnose	A4200	A4200	A4200	A4200	A4200	A4200
Corner	AN4200	AN4200	AN4200	AN4200	AN4200	AN4200
FLAT TOP COVE BASE						
Cove Base	A3601	A3601	A3601	A3601	A3601	A3601
Cove Base Corner	SCR3601 & SCL3601	SCR3601 & SCL3601	SCR3601 & SCL3601	SCR3601 & SCL3601	SCR3601 & SCL3601	SCR3601 & SCL3601

TRIM USAGE WITH TILE	4 x 12	4 x 8	4 x 4	3 x 12	3 x 6	2 x 8
Jolly	S1/212J	S1/212J	S1/212J	S1/212J	S1/212J	S1/212J
Quarter Round	A106	A106	A106	A106	A106	A106
Quarter Round Corner	AC106	AC106	AC106	AC106	AC106	AC106
SURFACE BULLNOSE						
Bullnose	S44C9MOD	S4489MOD	S4449		S4369MOD & S4639MOD	S4289MOD
Corner	SCRL4449	SCRL4449	SCRL4449		SCR4369M & SCL4369M	SN4289M
Bullnose					S4269	
Corner					SN4269	
RADIUS BULLNOSE						
Bullnose	A4200	A4200	A4200	A4200	A4200	A4200
Corner	AN4200	AN4200	AN4200	AN4200	AN4200	AN4200
FLAT TOP COVE BASE						
Cove Base	A3401	A3401	A3401	A3361MOD	A3361MOD	A3401
Cove Base Corner	SCR3401 & SCL3401	SCR3401 & SCL3401	SCR3401 & SCL3401	SCR3361M & SCL3361M	SCR3361M & SCL3361M	SCR3361M & SCL3361M

COVE BASE USAGE CHART WITHOUT WALL TILE	Best Match		
SANITARY COVE BASE	SANITARY COVE BASE - SLIM FOOT		
Cove Base	S3619T	Cove Base	S3619TN
Cove Base Corner	SCR3619T & SCL3619T	Cove Base Corner	SC3619TN
Cove Base	S3419T		
Cove Base Corner	SCR3419T & SCL3419T		

TRIM

TRIM	Thickness	Pieces/ Carton
 S1/212J / 1/2 x 12 Jolly (1/2" x 11-15/16") (1.29 cm x 30.36 cm)	1/4" 720 mm	12
 A106 / 1 x 6 Quarter Round (1" x 6") (2.43 cm x 15.16 cm)	5/16" 790 mm	152
 AC106 / 1 x 6 Quarter Round Corner (1" x 6") (2.43 cm x 15.16 cm)	5/16" 790 mm	120
SURFACE BULLNOSE		
 S44D9 / 4 x 16 Bullnose (on 16" side) (4" x 16") (10.17 cm x 40.68 cm)	3/8" 930 mm	24
 SN44D9 / 4 x 4 Bullnose Corner (4" x 4") (10.17 cm x 10.17 cm)	3/8" 930 mm	20
 S4269 / 2 x 6 Bullnose (on 6" side) (2" x 6") (5.15 cm x 15.29 cm)	5/16" 790 mm	100
 SN4269 / 2 x 2 Bullnose Corner (2" x 2") (5.15 cm x 5.15 cm)	5/16" 790 mm	25
 S4669 / 6 x 6 Bullnose (6" x 6") (15.31 cm x 15.31 cm)	5/16" 790 mm	50
 SCRL4669 / 6 x 6 Bullnose Corner (6" x 6") (15.31 cm x 15.31 cm)	5/16" 790 mm	50
 S44C9MOD / 4 x 12 Bullnose (4-1/4" x 12-7/8") (10.90 cm x 32.77 cm)	5/16" 790 mm	28
 S4489MOD / 4 x 8 Bullnose (4-1/4" x 8-9/16") (10.90 cm x 21.82 cm)	5/16" 790 mm	42
 S4449 / 4 x 4 Bullnose (4-1/4" x 4-1/4") (10.90 cm x 10.90 cm)	5/16" 790 mm	100
 SCRL4449 / 4 x 4 Bullnose Corner (4-1/4" x 4-1/4") (10.90 cm x 10.90 cm)	5/16" 790 mm	100
 S4369MOD / 3 x 6 Bullnose (on 6" side) (3" x 6") (7.65 cm x 15.31 cm)	5/16" 790 mm	100
 S4639MOD / 3 x 6 Bullnose (on 3" side) (3" x 6") (7.65 cm x 15.31 cm)	5/16" 790 mm	100
 SCR4369M / 3 x 6 Bullnose Corner Right (3" x 6") (7.65 cm x 15.31 cm)	5/16" 790 mm	100
 SCL4369M / 3 x 6 Bullnose Corner Left (3" x 6") (7.65 cm x 15.31 cm)	5/16" 790 mm	100
 S4289MOD / 2 x 8 Bullnose (on 8" side) (2-1/8" x 8-9/16") (5.45 cm x 21.82 cm)	5/6" 790 mm	80
 SN4289M / 2 x 2 Bullnose Corner (2-1/8" x 2-1/8") (5.45 cm x 5.45 cm)	5/16" 790 mm	25

TRIM (CON'T)

TRIM	Thickness	Pieces/ Carton
RADIUS BULLNOSE		
 A4200 / 2 x 6 Bullnose (2" x 6") (5.28 cm x 15.20 cm)	5/16" 790 mm	100
 AN4200 / 2 x 2 Bullnose Corner (2" x 2") (5.28 cm x 5.28 cm)	5/16" 790 mm	20
FLAT TOP COVE BASE		
 A3601 / 6 x 6 Cove Base (6" x 6") (15.31 cm x 15.31 cm)	5/16" 790 mm	44
 SCR3601 / 6 x 6 Cove Corner Right (6" x 6") (15.31 cm x 15.31 cm)	5/16" 790 mm	20
 SCL3601 / 6 x 6 Cove Corner Left (6" x 6") (15.31 cm x 15.31 cm)	5/16" 790 mm	20
 A3401 / 4 x 4 Cove Base (4-1/4" x 4-1/4") (10.90 cm x 10.90 cm)	5/16" 790 mm	84
 SCR3401 / 4 x 4 Cove Corner Right (4-1/4" x 4-1/4") (10.90 cm x 10.90 cm)	5/16" 790 mm	30
 SCL3401 / 4 x 4 Cove Corner Left (4-1/4" x 4-1/4") (10.90 cm x 10.90 cm)	5/16" 790 mm	30
 A3361MOD / 3 x 6 Cove Base (3" x 6") (7.65 cm x 15.31 cm)	5/16" 790 mm	36
 SCR3361M / 3 x 6 Cove Base Corner Right (3" x 6") (7.65 cm x 15.31 cm)	5/16" 790 mm	36
 SCL3361M / 3 x 6 Cove Base Corner Left (3" x 6") (7.65 cm x 15.31 cm)	5/16" 790 mm	36
SANITARY COVE BASE		
 S3619T / 6 x 6 Cove Base (6" x 6") (15.31 cm x 15.31 cm)	5/16" 790 mm	40
 SCR3619T / 6 x 6 Cove Base Corner Right (6" x 6") (15.31 cm x 15.31 cm)	5/16" 790 mm	20
 SCL3619T / 6 x 6 Cove Base Corner Left (6" x 6") (15.31 cm x 15.31 cm)	5/16" 790 mm	20
 S3419T / 4 x 6 Cove Base (4-1/4" x 6") (10.90 cm x 15.31 cm)	5/16" 790 mm	60
 SCR3419T / 4 x 6 Cove Base Corner Right (4-1/4" x 6") (10.90 cm x 15.31 cm)	5/16" 790 mm	20
 SCL3419T / 4 x 6 Cove Base Corner Left (4-1/4" x 6") (10.90 cm x 15.31 cm)	5/16" 790 mm	20
SANITARY COVE BASE - Slim Foot Design *		
 S3619TN / 6 x 6 Cove Base (6" x 6") (15.31 cm x 15.31 cm)	5/16" 790 mm	40
 SC3619TN / 1 x 6 Cove Base Corner (1" x 6") (2.43 cm x 15.16 cm)	5/16" 790 mm	60

TRIM (CON'T)

TRIM	Thickness	Pieces/ Carton
LINERS		
 16 / 1 x 6 Flat (1" x 6") (2.57 cm x 15.20 cm)	5/16" 8.00 mm	20
 16BN / 1 x 6 Flat Bullnose (1" x 6") (2.57 cm x 15.20 cm)	5/16" 8.00 mm	20
 16END / 1 x 6 Flat Bullnose End (1" x 6") (2.57 cm x 15.20 cm)	5/16" 8.00 mm	20
 16DOM / 1 x 6 Dome (1" x 6") (2.57 cm x 15.20 cm)	7/16" 11.81 mm	15
 16DOMBN / 1 x 6 Dome Bullnose (1" x 6") (2.57 cm x 15.20 cm)	7/16" 11.81 mm	15
 16DOMED / 1 x 6 Dome Bullnose End (1" x 6") (2.57 cm x 15.20 cm)	7/16" 11.81 mm	15
 16ROP / 1 x 6 Rope (1" x 6") (3.20 cm x 15.20 cm)	5/8" 16.11 mm	16
 16ROPED / 1 x 6 Rope End (1" x 6") (3.20 cm x 15.20 cm)	5/8" 16.11 mm	16
 1/26 / 1/2 x 6 Flat (1/2" x 6") (1.30 cm x 15.20 cm)	5/16" 8.00 mm	20
 1/26BN / 1/2 x 6 Flat Bullnose (1/2" x 6") (1.30 cm x 15.20 cm)	5/16" 8.00 mm	20
 1/26END / 1/2 x 6 Flat Bullnose End (1/2" x 6") (1.30 cm x 15.20 cm)	5/16" 8.00 mm	20
 1/26HRD / 1/2 x 6 Half Round (1/2" x 6") (1.30 cm x 15.20 cm)	7/16" 11.30 mm	15
 1/26HRDBN / 1/2 x 6 Half Round Bullnose (1/2" x 6") (1.30 cm x 15.20 cm)	7/16" 11.30 mm	15
 1/26HRDED / 1/2 x 6 Half Round Bullnose End (1/2" x 6") (1.30 cm x 15.20 cm)	7/16" 11.30 mm	15
 1/26DRO / 1/2 x 6 Droplet (1/2" x 6") (1.30 cm x 15.20 cm)	7/16" 11.43 mm	15
 1/26DROED / 1/2 x 6 Droplet End (1/2" x 6") (1.30 cm x 15.20 cm)	7/16" 11.43 mm	15
 1/26PAY / 1/2 x 6 Payette (1/2" x 6") (1.30 cm x 15.20 cm)	7/16" 19.18 mm	15
 1/26PAYED / 1/2 x 6 Payette End (1/2" x 6") (1.30 cm x 15.20 cm)	7/16" 19.18 mm	15
RAILS		
 22CR / 2 x 6 Chair Rail (2-1/2" x 5-15/16") (6.42 cm x 15.20 cm)	3/8" 10.16 mm	8
 22CRCN / 2 x 2 Chair Rail Corner (2-1/2" x 2-1/2") (6.42 cm x 6.42 cm)	3/8" 10.16 mm	20
 26SR / 2 x 6 Shelf Rail (2-1/2" x 5-15/16") (6.42 cm x 15.20 cm)	3/8" 10.16 mm	8
22SRCN / 2 x 2 Shelf Rail Corner (2-1/2" x 2-1/2") (6.42 cm x 6.42 cm)	3/8" 10.16 mm	12
WAB262 / 2 x 6 Sink Rail (2-1/8" x 5-15/16" x 2-9/16") (5.43 cm x 15.13 cm x 6.41 cm)	1/2" 12.95 mm	66
WAC8262 / 2 x 2 Sink Rail Outside Corner (2-1/8" x 2-1/8" x 2-9/16") (5.41 cm x 5.41 cm x 6.41 cm)	1/2" 12.95 mm	40
WAM8262 / 2 x 2 Sink Rail Inside Corner (2-1/6" x 2-1/16") (5.33 cm x 5.33 cm)	1/2" 12.95 mm	20

COLORMATCH MUNSELL & LRV

	MUNSELL	LRV
Color	Illuminate-OBS: F02-02 (CWF)	
CU12 MATTE ARTICHOKE	4.0GY 5.7/2.0	58.55
CU13 VALENTINE	5.6R 4.1/9.4	40.63
CU16 MATTE MUSHROOM	1.3Y 5.8/1.5	29.62
CU22 MATTE RAIN	6.9G 7.1/1.2	73.45
CU30 MATTE KIWI	4.4GY 7.3/6.9	47.75
CU33 MATTE CARRARA	5.2Y 8.8/0.9	76.11
CU34 MATTE IRELAND	8.8BG 5.5/1.3	56.1
CU43 MATTE ATLANTIS	3.2PB 3.9/4.5	11.22
CU44 MATTE AZURE	1.9PB 5.7/6.0	23.58
CU46 MATTE BLUEBERRY	7.8 PB 3.0/4.1	6.76
CU47 MATTE BURGUNDY	1.5R 3.3/3.4	8.22
CU48 CARNATION	8.9Y 8.8/0.1	76.31
CU61 MATTE PACIFIC	0.9PB 3.5/4.1	8.8
CU63 MATTE PEARL WHITE	0.4GY 9.0/0.2	82.86
CU66 MATTE REAL TEAL	6.3B 3.7/2.9	9.9
CU68 MATTE STARLIGHT	9.2B 5.2/3.6	20.55
CU71 MATTE MANGO	2.8YR 5.9/8.1	31.49
CU74 MATTE TUSCANY	1.1YR 4.4/6.3	15.85
CU80 MATTE FERN	6.0GY 6.2/5.9	34.65
CU82 MATTE ICEBERG	9.9B 6.9/2.8	40.65
CU97 MATTE DAISY	2.7Y 7.6/9.2	59.48