



KEYSTONES™
PATTERN AND BORDER DESIGNS

 **daltile®**
IMAGINE WHAT'S POSSIBLE™

FROM THE DRAWING BOARD TO REALITY

At Daltile, if you can imagine it, we can create it. From vivid colors and on-trend shapes to unique patterns and bold borders, one simple design can turn your space into an incredible work of art. Keystones Custom Design Services gives you the creative freedom to make your design dreams a reality.



MOSAIC BORDERS & PATTERNS

Set your imagination free! Our colorful mosaics enable you to create patterned designs that complement any design scheme. Borders, corners and plaids blend seamlessly to create intricate and unique spaces. With custom designs, you'll never run out of ideas.

BOLD & ENDLESS PATTERNS

Daltile is proud to provide hundreds of patterns and borders that are carefully selected for their broad design appeal. Patterns are organized by sizes:

- 1 x 1 Standard Patterns
- 2 x 2 Standard Patterns
- 2 x 1 Standard Patterns
- Combination Patterns
- 1 x 1 Hexagon Patterns
- 2 x 2 Hexagon Patterns

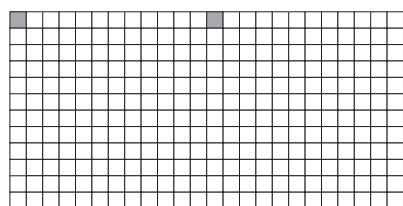
Use the interactive Mosaic Pattern Designer on daltile.com to mix and match to customize your own tile design. If you're looking to customize further, you can modify any of our patterns or create your own. Simply use the custom design worksheet attached or send us your own sketch.

COLORS & OPTIONS

The right color and finish can bring any pattern to life. That's why we offer a wide spectrum of tile colors and finishes to create an unforgettable look.

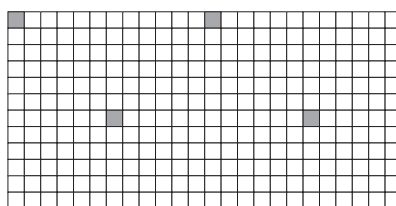
1 x 1 Standard Patterns

FIELD PATTERNS



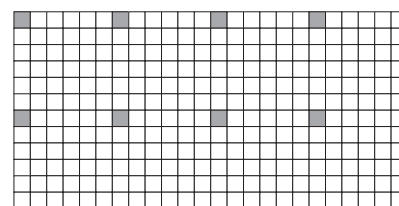
DP2001

□ 99% ■ 1%



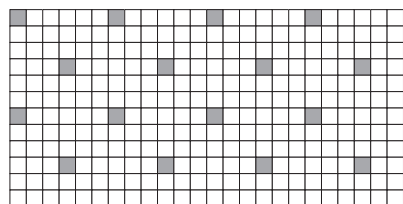
DP2002

□ 99% ■ 1%



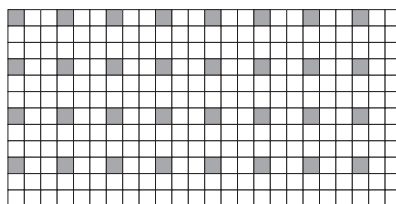
DP2003

□ 97% ■ 3%



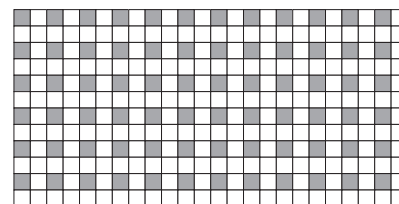
DP2004

□ 94% ■ 6%



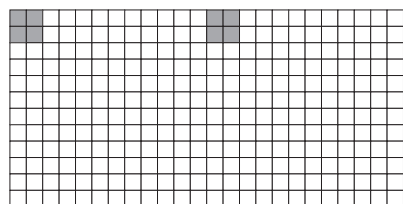
DP2005

□ 89% ■ 11%



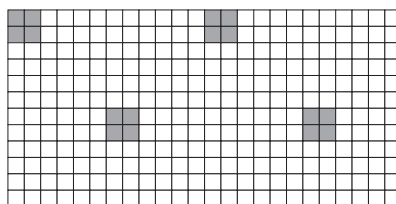
DP2006

□ 75% ■ 25%



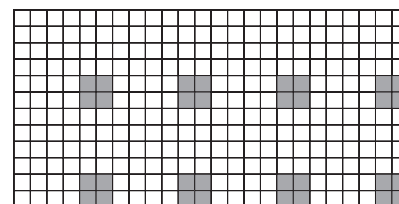
DP2007

□ 97% ■ 3%



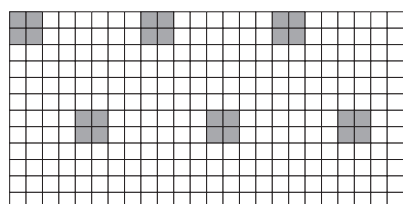
DP2008

□ 94% ■ 6%



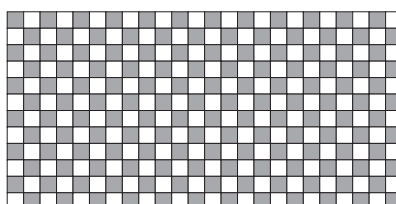
SP8108

■ 11% □ 89%



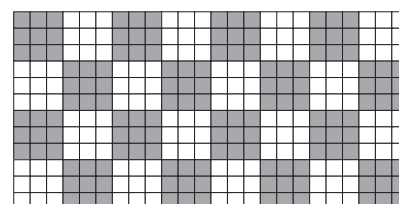
DP2010

□ 92% ■ 8%



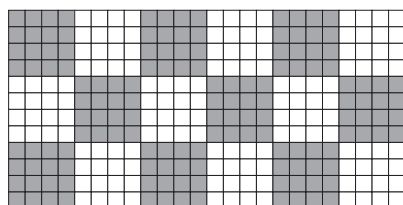
DP2011

□ 50% ■ 50%



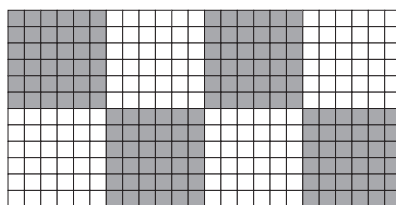
DP2012

□ 50% ■ 50%



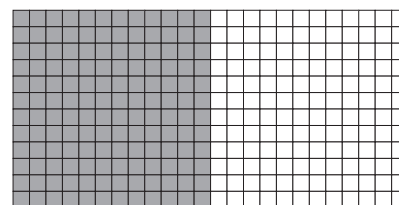
DP2013*

□ 50% ■ 50%



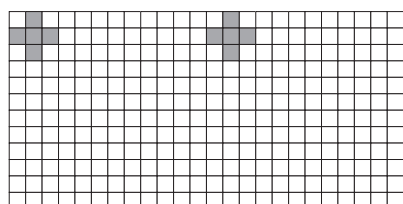
DP2014

□ 50% ■ 50%



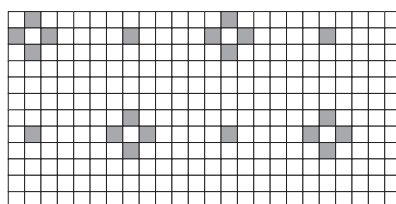
DP2015

□ 50% ■ 50%



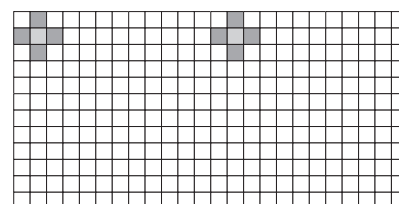
DP2016

□ 97% ■ 3%



DP2020

□ 93% ■ 7%



DP2022

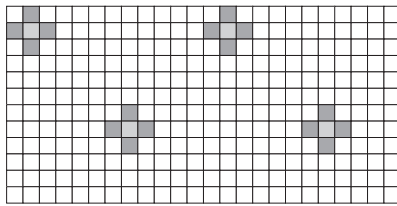
■ 1% □ 97% ■ 2%

*Offset sheet

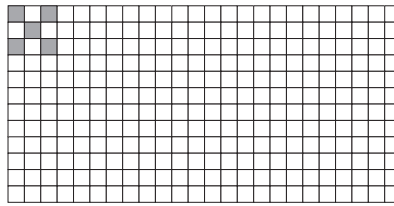
IMAGINE WHAT'S POSSIBLE™

1 x 1 Standard Patterns

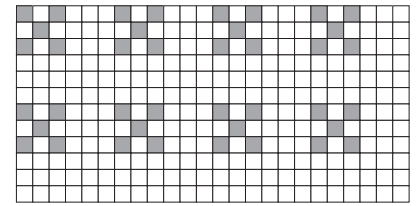
FIELD PATTERNS



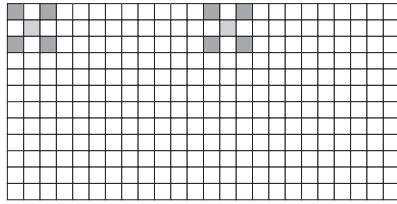
DP2023 1% 93% 6%



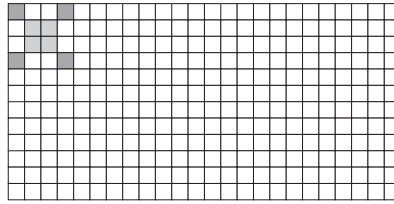
DP2024* 98% 2%



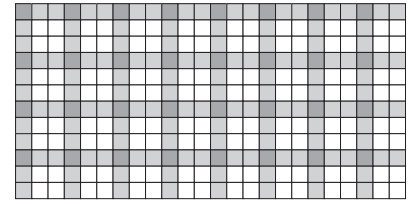
DP2025 86% 14%



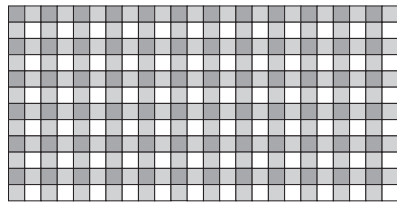
DP2026 1% 97% 2%



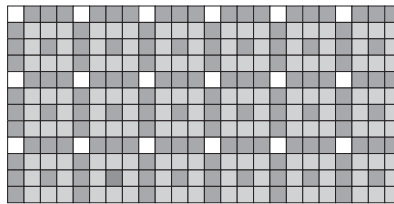
DP2027 1% 98% 1%



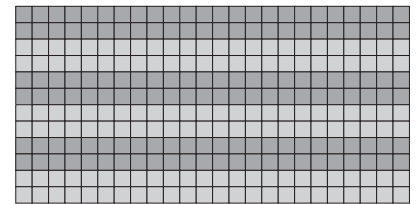
DP2033 44% 44% 12%



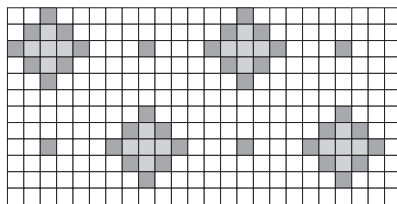
DP2034 50% 25% 25%



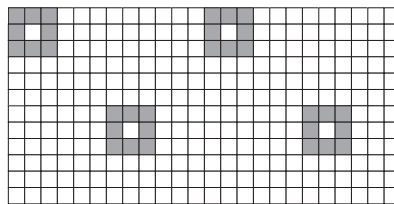
DP2036 50% 6% 44%



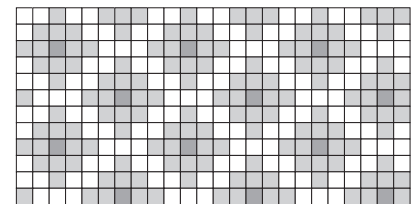
DP2038 50% 50%



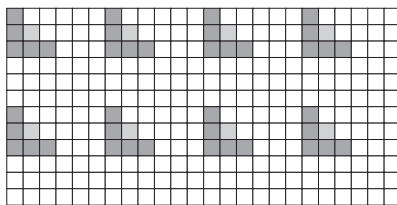
DP2040 6% 81% 13%



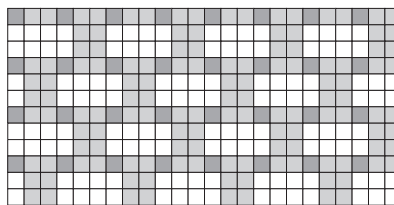
DP2041 89% 11%



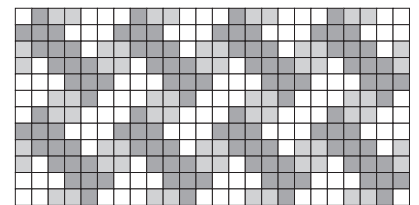
DP2043 50% 46% 4%



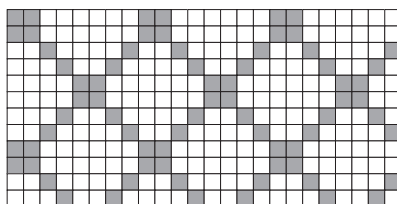
DP2044 3% 83% 14%



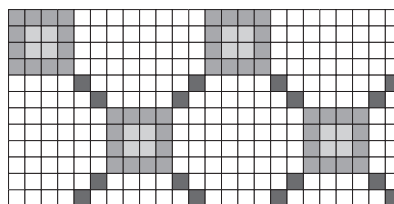
DP2045 44% 44% 12%



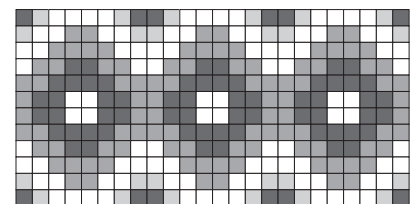
DP2047 22% 39% 39%



DP2049 75% 25%



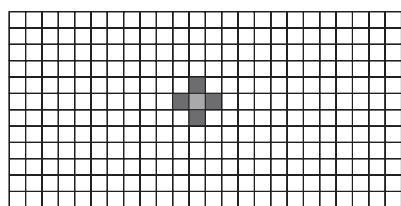
DP2050 6% 17% 71% 6%



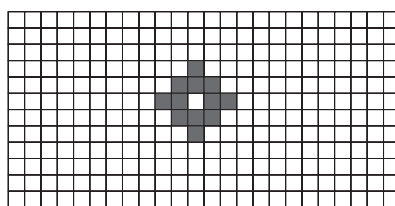
DP2055 9% 33% 33% 25%

1 x 1 Standard Patterns

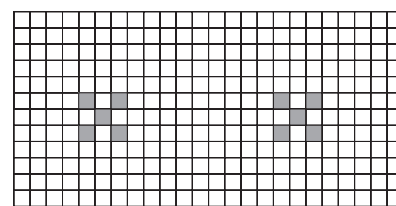
FIELD PATTERNS



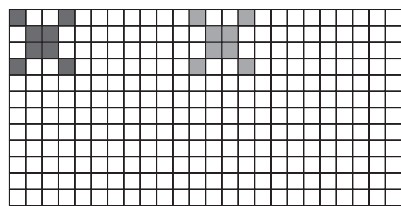
SP8109* ■ 2% ■ 1% □ 97%



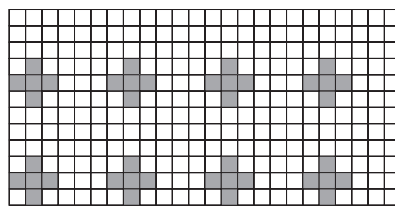
SP8110* ■ 4% □ 96%



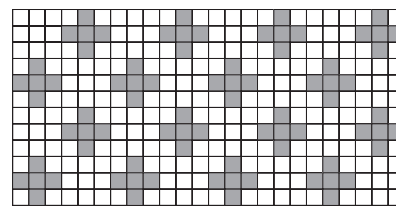
SP8112 ■ 3% □ 97%



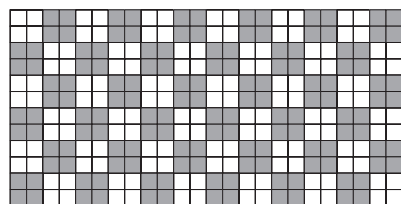
SP8115* ■ 3% ■ 3% □ 94%



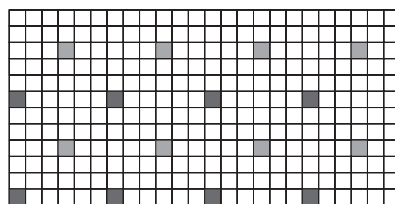
SP8117 ■ 14% □ 86%



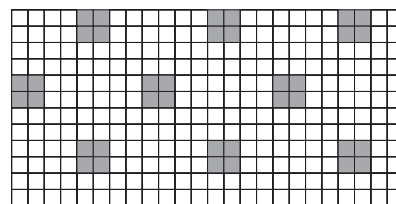
SP8118 ■ 28% □ 72%



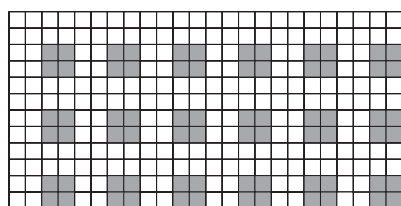
SP8121 ■ 50% □ 50%



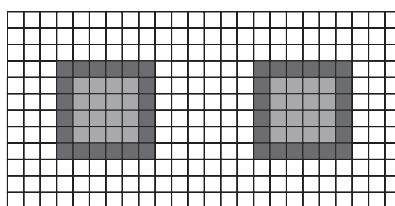
SP8125 ■ 3% ■ 3% □ 49%



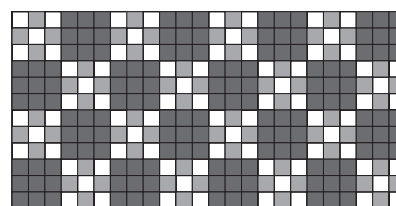
SP8126* ■ 12% □ 88%



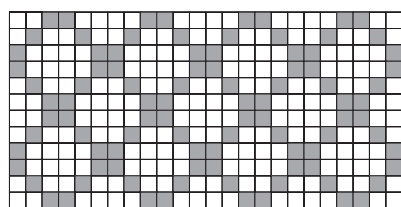
SP8127 ■ 25% □ 75%



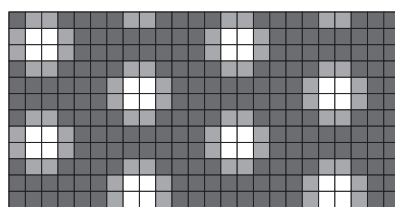
SP8128 ■ 14% ■ 11% □ 75%



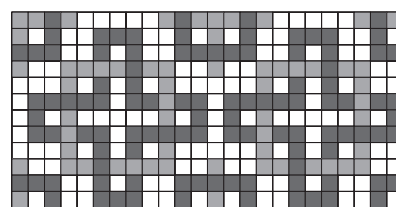
SP8131 ■ 50% ■ 22% □ 28%



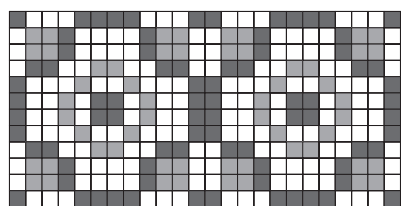
SP8132 ■ 33% □ 67%



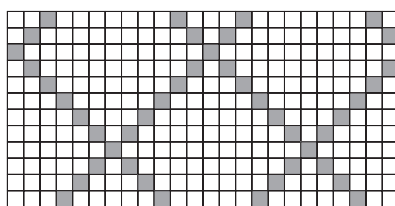
SP8133 ■ 67% ■ 22% □ 11%



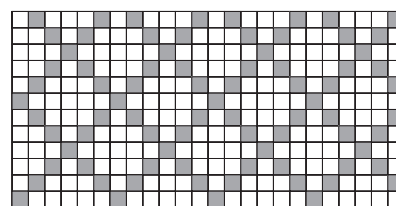
SP8134 ■ 36% ■ 20% □ 44%



SP8135 ■ 27% ■ 19% □ 54%



SP8136 ■ 15% □ 85%



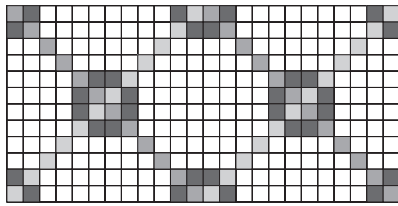
SP8137 ■ 28% □ 72%

*Offset sheet

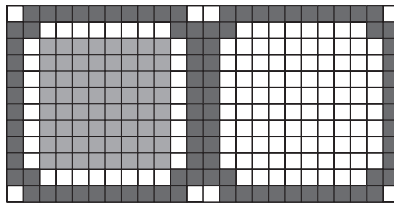
IMAGINE WHAT'S POSSIBLE™

1 x 1 Standard Patterns

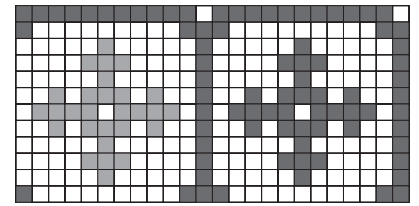
FIELD PATTERNS



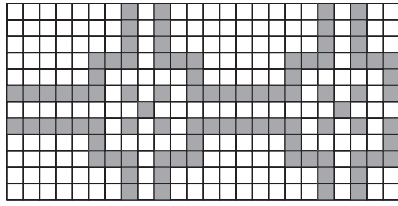
SP8138 ■ 11% ■ 8% ■ 8% □ 73%



SP8139* ■ 30% ■ 22% □ 48%



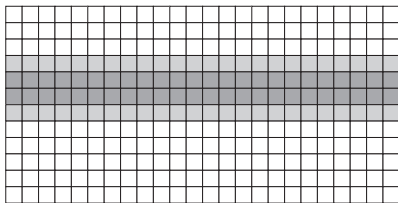
SP8140* ■ 28% ■ 10% □ 62%



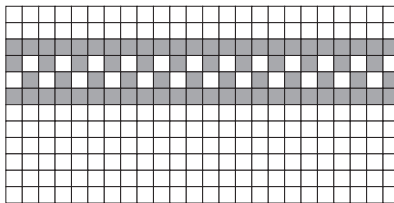
SP8141 ■ 31% □ 69%

1 x 1 Standard Patterns

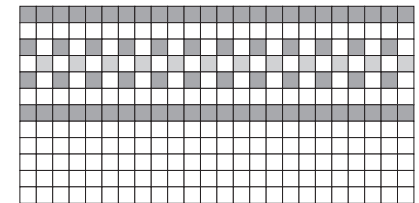
BORDER PATTERNS



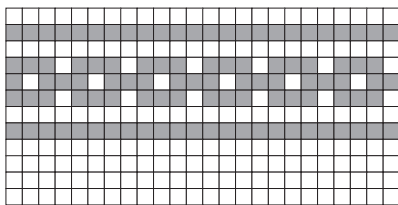
DB2501 ■ 17% □ 66% ■ 17%



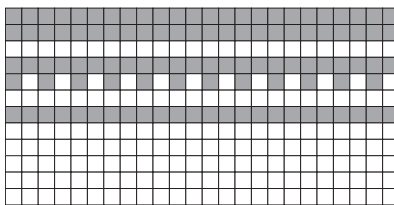
DB2503 □ 75% ■ 25%



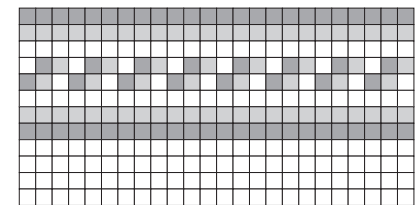
DB2504 ■ 4% □ 71% ■ 25%



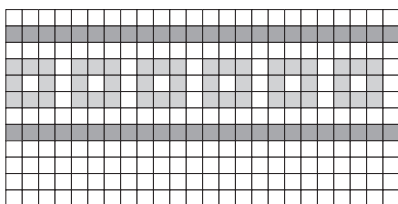
DB2505 □ 65% ■ 35%



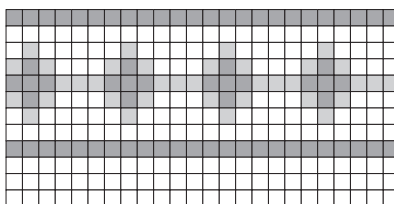
DB2507 □ 63% ■ 37%



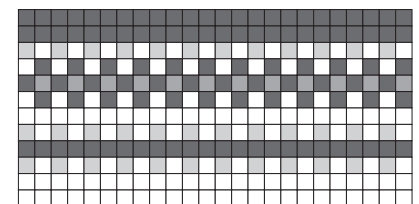
DB2509 ■ 22% □ 56% ■ 22%



DB2510 ■ 17% □ 66% ■ 17%



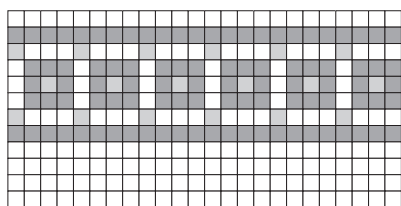
DB2516 ■ 12% □ 64% ■ 24%



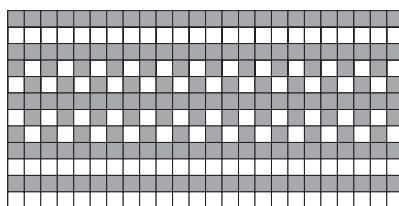
DB2518 ■ 4% ■ 12% □ 46% ■ 38%

1 x 1 Standard Patterns

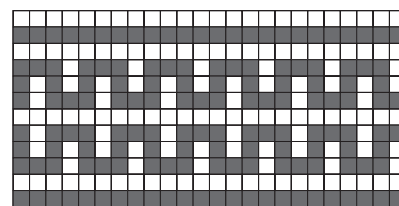
BORDER PATTERNS



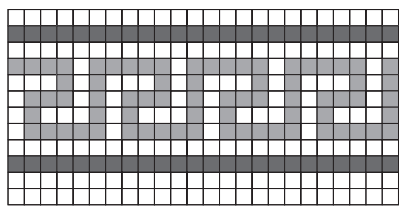
DB2521 ■ 7% □ 60% ■ 33%



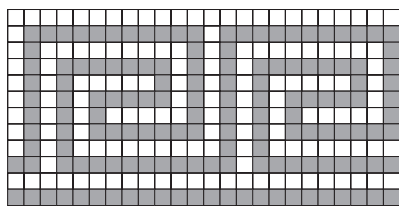
SB1115 ■ 58% □ 42%



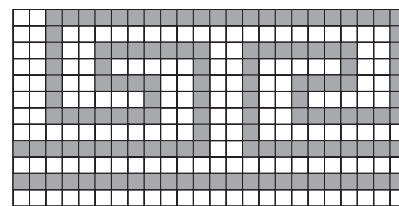
SB1117 ■ 50% □ 50%



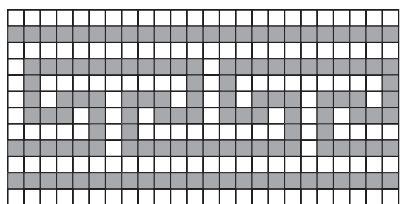
SB1118 ■ 17% ■ 25% □ 58%



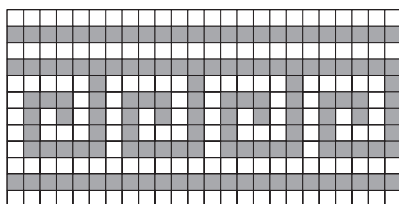
SB1119 ■ 50% □ 50%



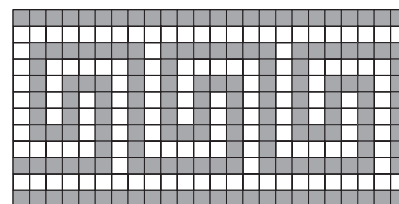
SB1120 ■ 44% □ 56%



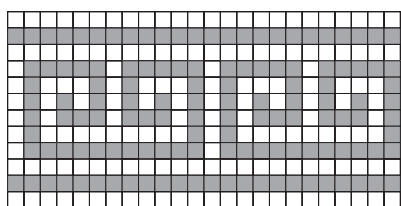
SB1121 ■ 44% □ 56%



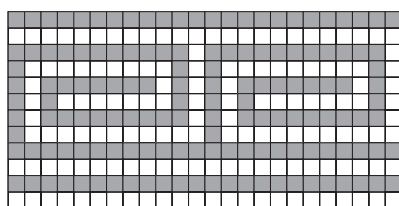
SB1122 ■ 46% □ 54%



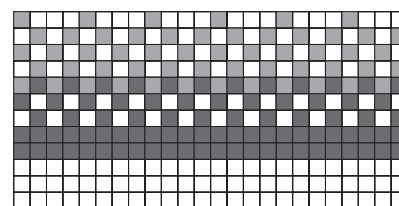
SB1123 ■ 50% □ 50%



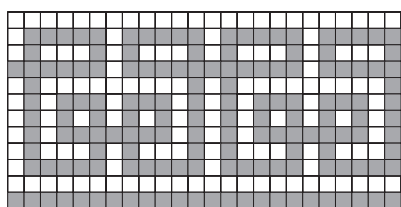
SB1124 ■ 45% □ 55%



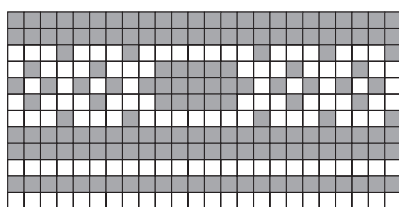
SB1125 ■ 50% □ 50%



SB1126 ■ 29% ■ 19% □ 52%

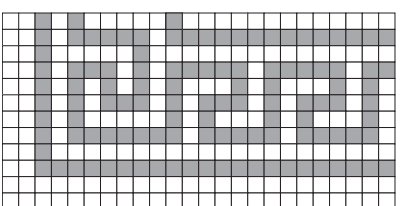


SB1127 ■ 53% □ 47%

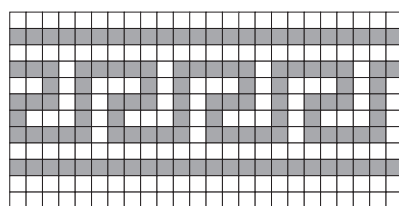


SB1128 ■ 58% □ 42%

BORDERS AND CORNERS



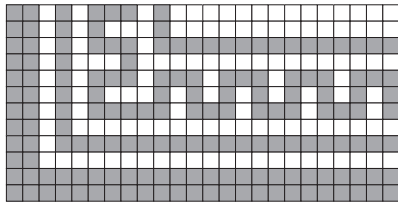
DB2525 CORNER □ 61% ■ 39%



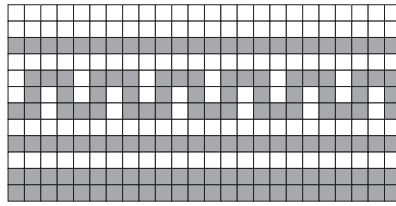
DB2525 BORDER □ 58% ■ 42%

1 x 1 Standard Patterns

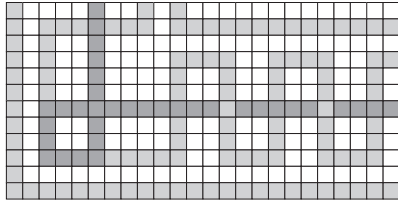
BORDER PATTERNS



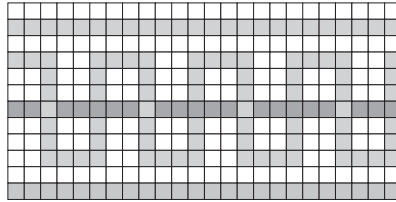
DB2526 CORNER □ 44% ■ 56%



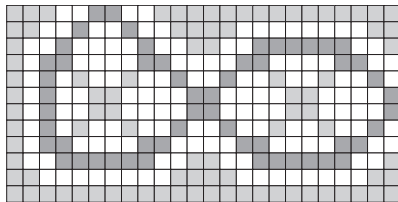
DB2526 BORDER □ 50% ■ 50%



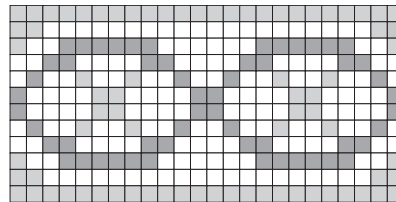
DB2530 CORNER ■ 37% □ 51% ■ 12%



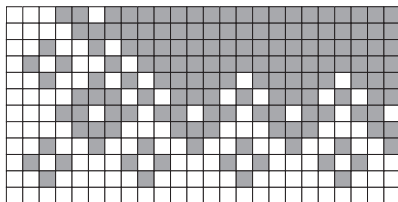
DB2530 BORDER ■ 40% □ 53% ■ 7%



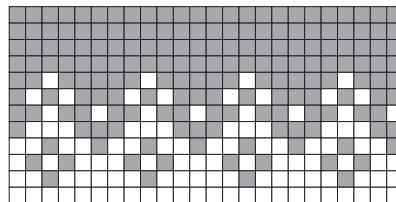
DB2531 CORNER ■ 31% □ 50% ■ 19%



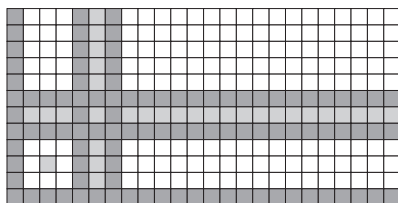
DB2531 BORDER ■ 31% □ 50% ■ 19%



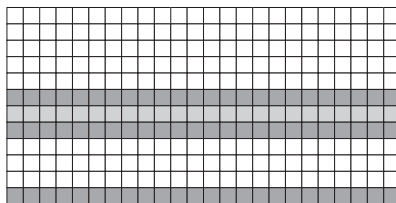
DB2532 CORNER □ 47% ■ 53%



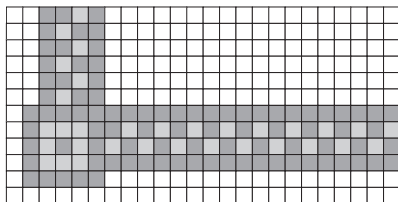
DB2532 BORDER □ 37% ■ 63%



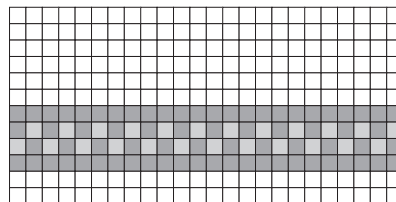
DB2535 CORNER ■ 11% □ 55% ■ 34%



DB2535 BORDER ■ 8% □ 67% ■ 25%



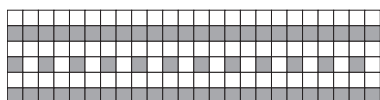
DB2536 CORNER ■ 11% □ 58% ■ 31%



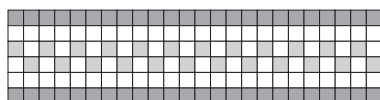
DB2536 BORDER ■ 8% □ 67% ■ 25%

1 x 1 Standard Patterns

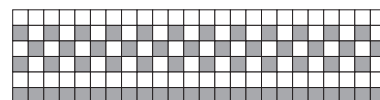
SIX-INCH BORDERS



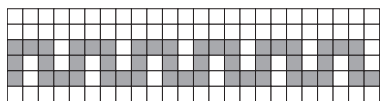
DB2537 □ 58% ■ 42%



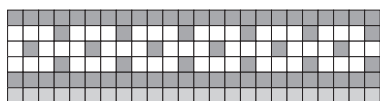
DB2538 ■ 17% □ 50% ■ 33%



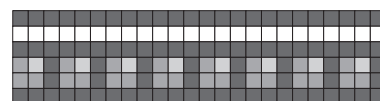
DB2539 □ 58% ■ 42%



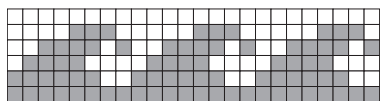
DB2541 □ 67% ■ 33%



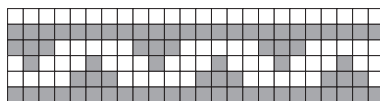
DB2542 ■ 17% □ 37% ■ 46%



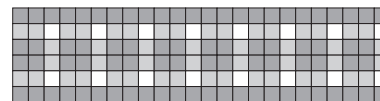
DB2545 ■ 5% ■ 17% □ 17% ■ 61%



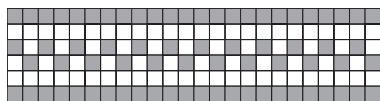
DB2546 □ 46% ■ 54%



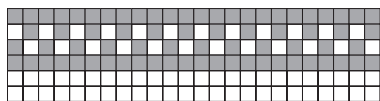
DB2547 □ 50% ■ 50%



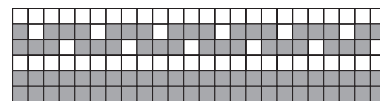
DB2548 ■ 33% □ 11% ■ 56%



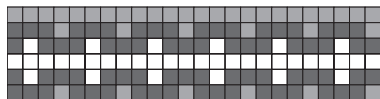
SB1102 ■ 50% □ 50%



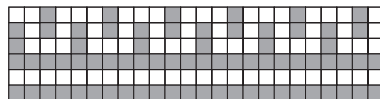
SB1103 ■ 50% □ 50%



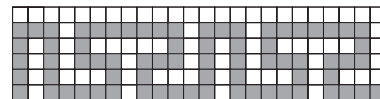
SB1105 ■ 58% □ 42%



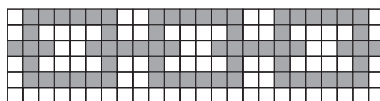
SB1106 ■ 50% ■ 25% □ 25%



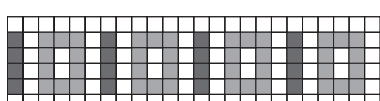
SB1107 ■ 50% □ 50%



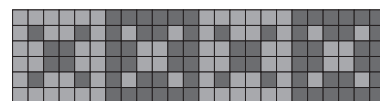
SB1108 ■ 50% □ 50%



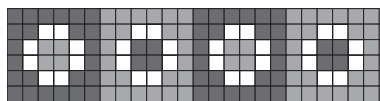
SB1110 ■ 46% □ 54%



SB1111 ■ 11% ■ 28% □ 61%



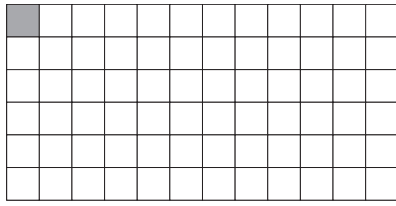
SB1112 ■ 50% ■ 50%



SB1113 ■ 39% ■ 39% □ 22%

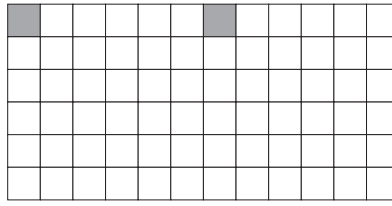
2 x 2 Standard Patterns

FIELD PATTERNS



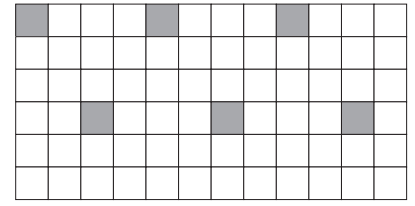
DP3001

□ 99% ■ 1%



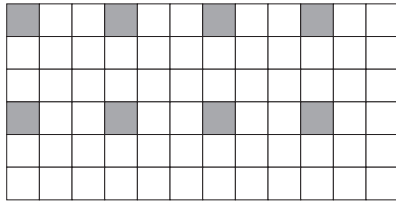
DP3002

□ 97% ■ 3%



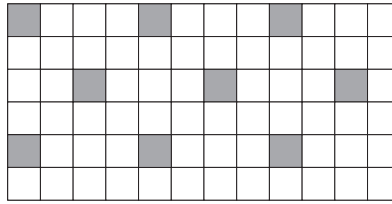
DP3003

□ 92% ■ 8%



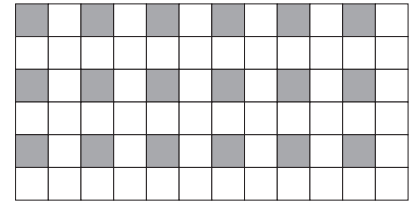
DP3004

□ 89% ■ 11%



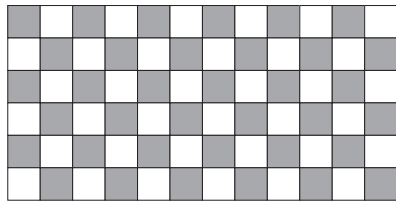
DP3005*

□ 87% ■ 13%



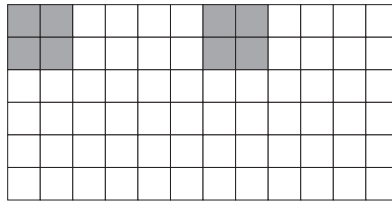
DP3006

□ 75% ■ 25%



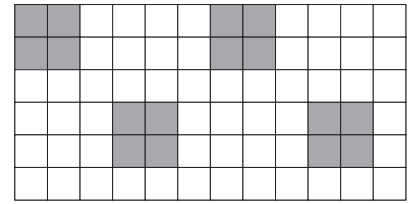
DP3007

□ 50% ■ 50%



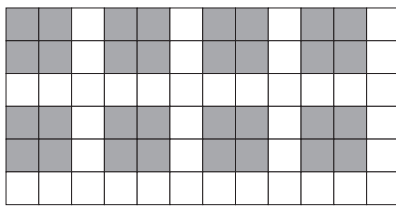
DP3008

□ 89% ■ 11%



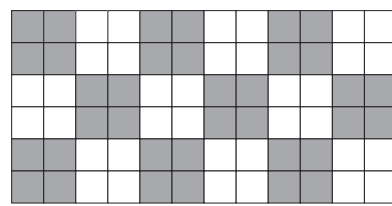
DP3009

□ 78% ■ 22%



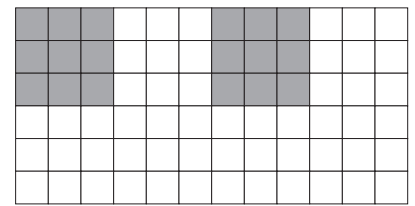
DP3010

□ 56% ■ 44%



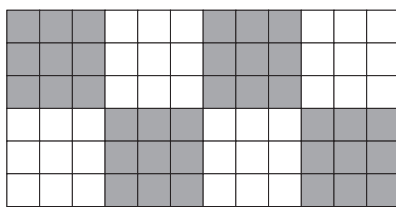
DP3011*

□ 50% ■ 50%



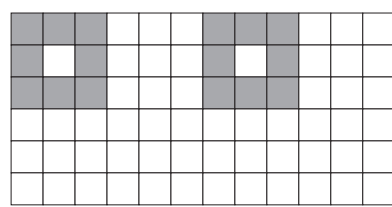
DP3012

□ 75% ■ 25%



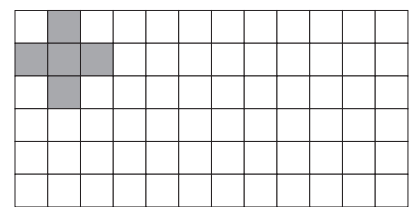
DP3013

□ 50% ■ 50%



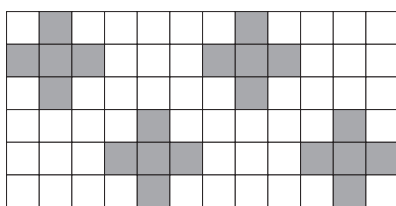
DP3014

□ 78% ■ 22%



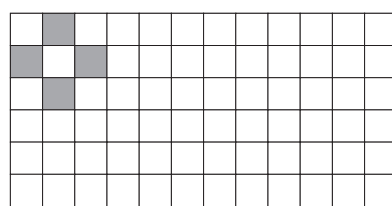
DP3015*

□ 93% ■ 7%



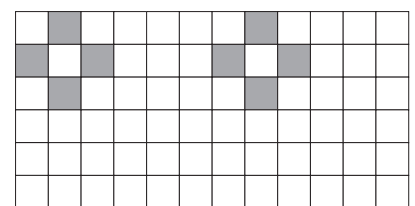
DP3016

□ 72% ■ 28%



DP3017*

□ 94% ■ 6%

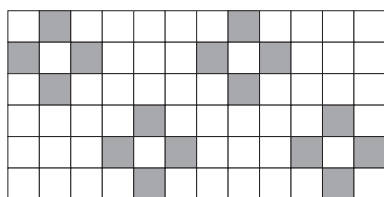


DP3018

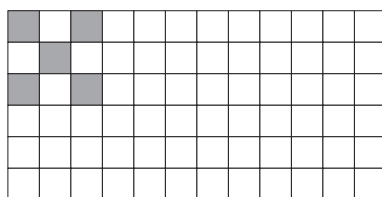
□ 89% ■ 11%

2 x 2 Standard Patterns

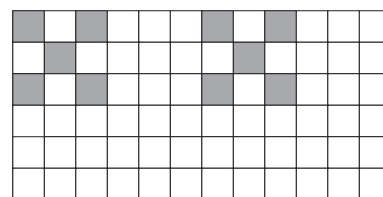
FIELD PATTERNS



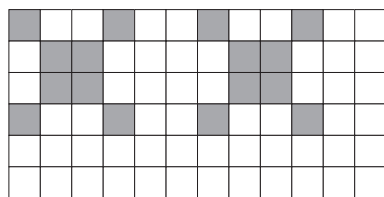
DP3019 □ 78% ■ 22%



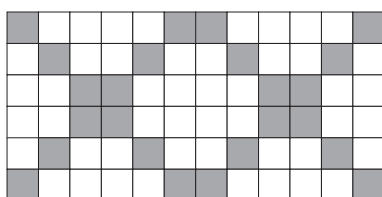
DP3020* □ 93% ■ 7%



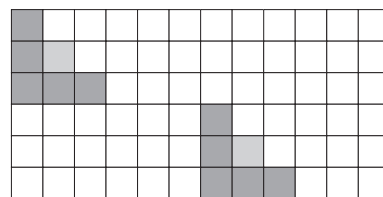
DP3021 □ 86% ■ 14%



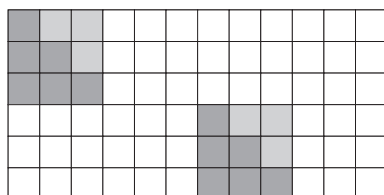
DP3022 □ 78% ■ 22%



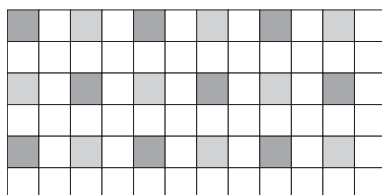
DP3023 □ 67% ■ 33%



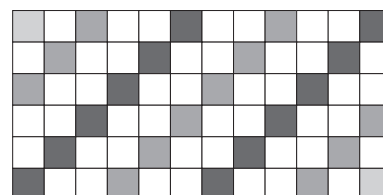
DP3024 ■ 3% □ 83% ■ 14%



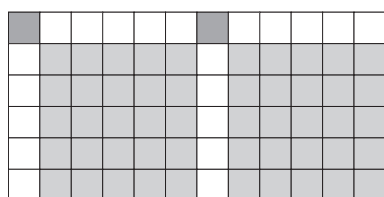
DP3025 ■ 8% □ 75% ■ 17%



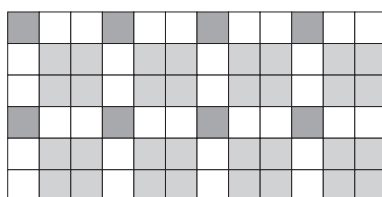
DP3027* ■ 12% □ 76% ■ 12%



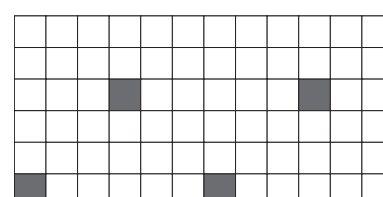
DP3028 ■ 3% ■ 17% □ 63% ■ 17%



DP3029 ■ 69% □ 28% ■ 3%

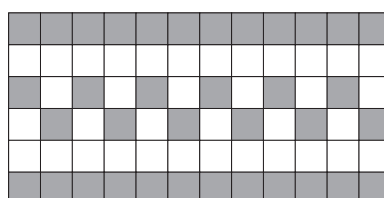


DP3032 ■ 44% □ 44% ■ 12%

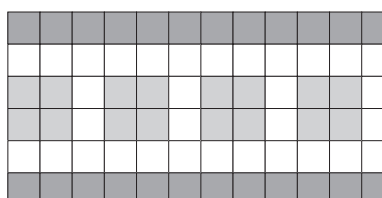


SP8202 □ 6% ■ 94%

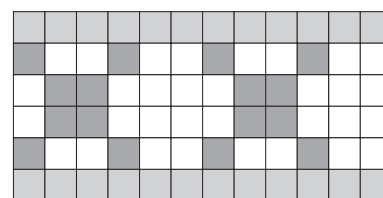
BORDER PATTERNS



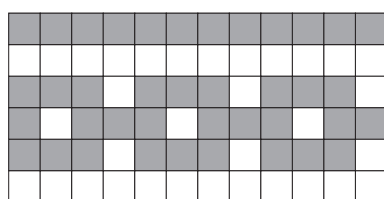
DB3501 □ 50% ■ 50%



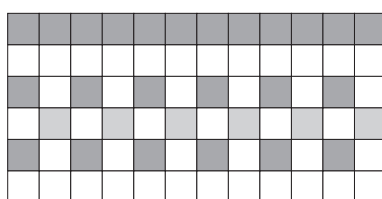
DB3502 ■ 17% □ 50% ■ 33%



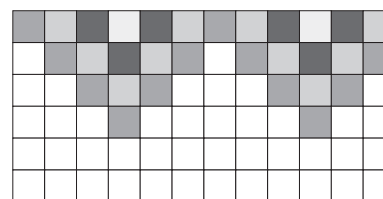
DB3503 ■ 33% □ 45% ■ 22%



DB3505 □ 46% ■ 54%



DB3506 ■ 8% □ 59% ■ 33%



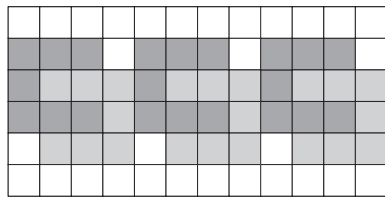
DB3508 □ 3% ■ 14% ■ 8% □ 58% ■ 17%

*Offset sheet

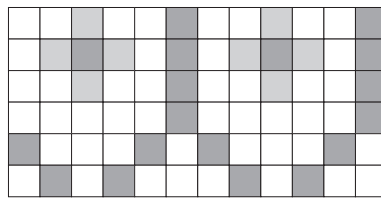
IMAGINE WHAT'S POSSIBLE™

2 x 2 Standard Patterns

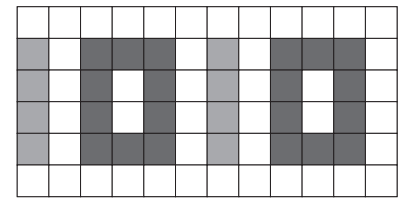
BORDER PATTERNS



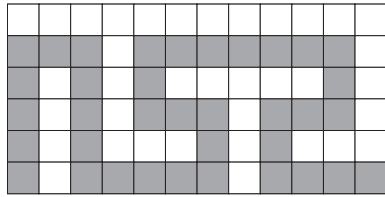
DB3510 29% 42% 29%



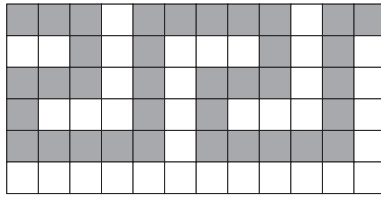
DB3513 11% 64% 25%



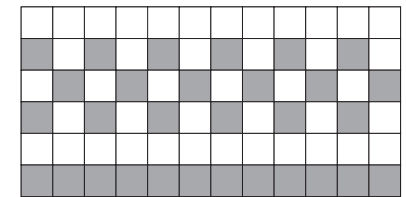
SB1201 28% 11% 61%



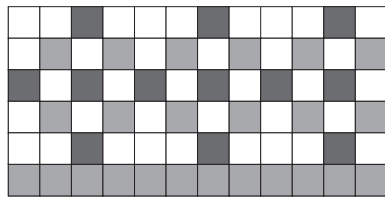
SB1204 50% 50%



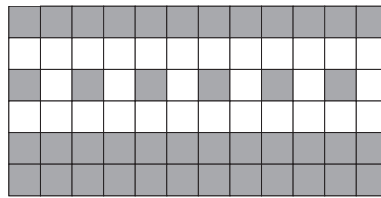
SB1205 50% 50%



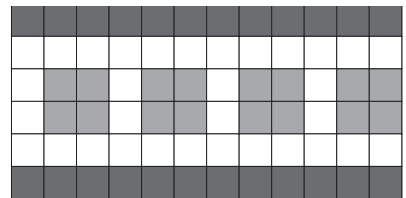
SB1207 42% 58%



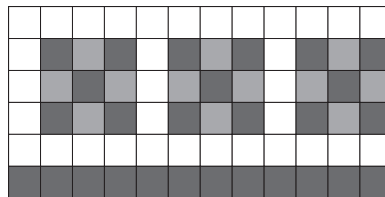
SB1209 17% 33% 50%



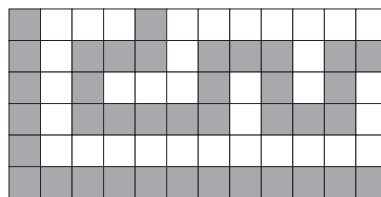
SB1210 58% 42%



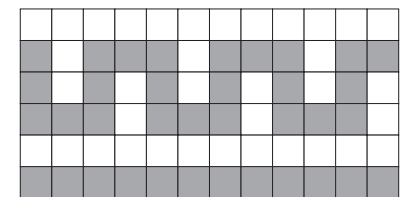
SB1211 34% 22% 44%



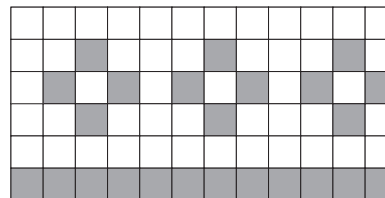
SB1212 37% 17% 46%



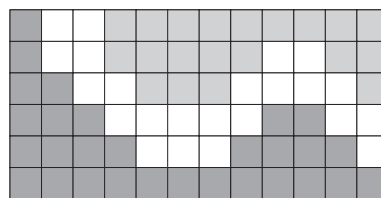
DB3511CORNER 47% 53%



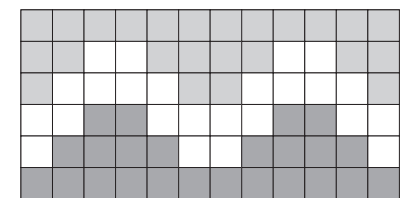
DB3511BORDER 50% 50%



SB1213 33% 67%

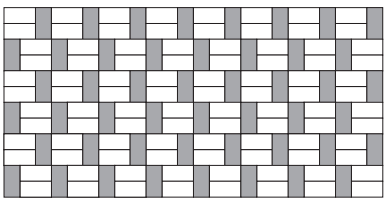


DB3514 CORNER 28% 32% 40%

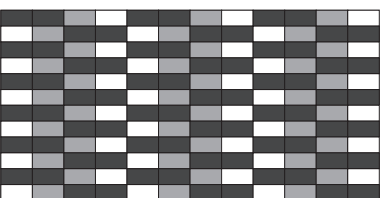


DB3514 BORDER 33% 34% 33%

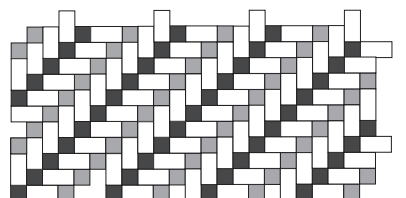
2 x 1 Standard Patterns



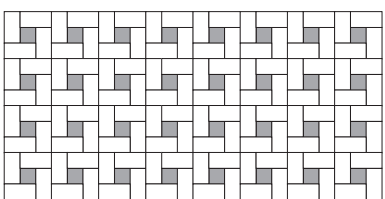
SP2603 67% 33%



SP2606 25% 25% 50%



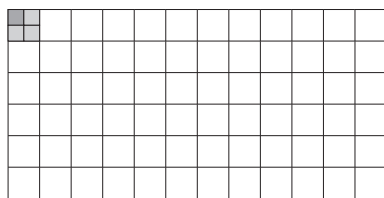
SP2701 70% 15% 15%



D00021WIND 11% 89%

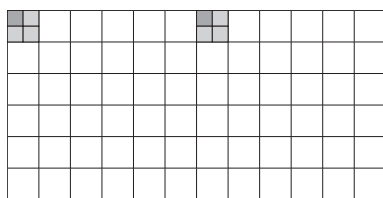
Combination Patterns

FIELD PATTERNS



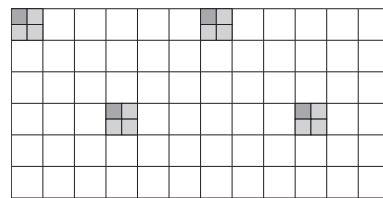
DP5001

1% 1"x1" 98% 2"x2" 1% 1"x1"



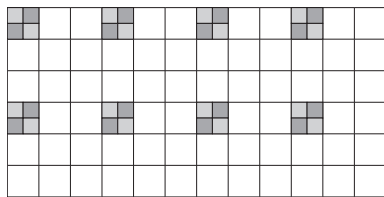
DP5002

1% 1"x1" 98% 2"x2" 1% 1"x1"



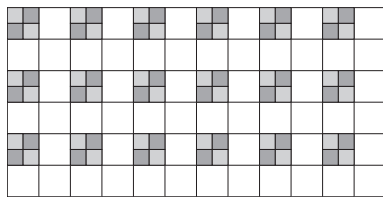
DP5003

4% 1"x1" 95% 2"x2" 1% 1"x1"



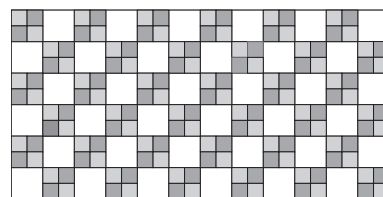
DP5004

6% 1"x1" 88% 2"x2" 6% 1"x1"



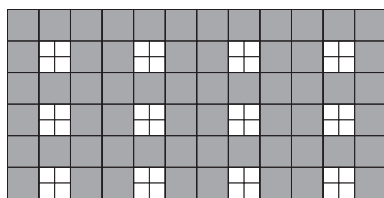
DP5005

12% 1"x1" 76% 2"x2" 12% 1"x1"



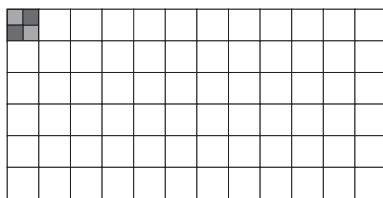
DP5006

25% 1"x1" 50% 2"x2" 25% 1"x1"



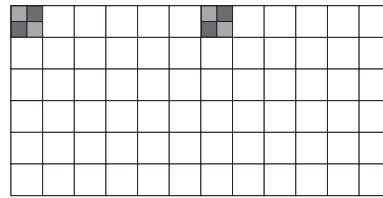
DP5015

17% 1"x1" 83% 2"x2"



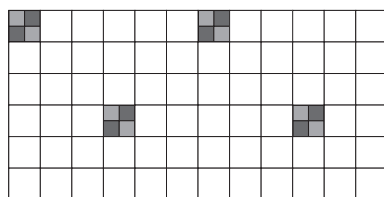
SP8301*

1% 1"x1" 98% 2"x2" 1% 1"x1"



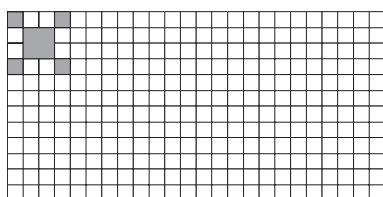
SP8302

1% 1"x1" 98% 2"x2" 1% 1"x1"



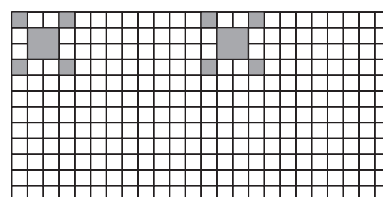
SP8303

3% 1"x1" 94% 2"x2" 3% 1"x1"



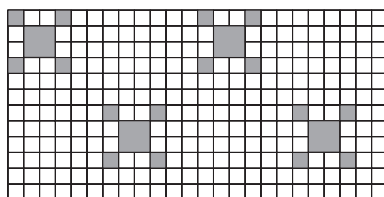
SP8310*

1% 2"x2" 1% 1"x1" 98% 1"x1"



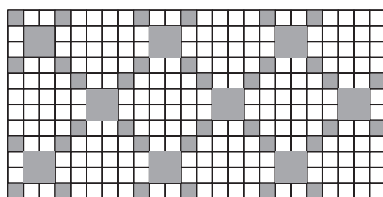
SP8311

3% 2"x2" 3% 1"x1" 94% 1"x1"



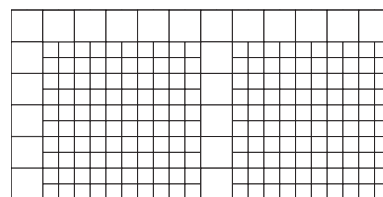
SP8312

6% 2"x2" 6% 1"x1" 88% 1"x1"



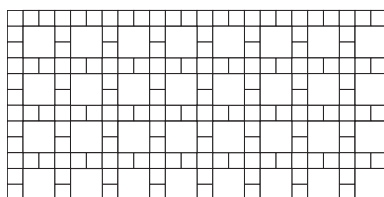
SP8313*

12% 2"x2" 12% 1"x1" 76% 1"x1"



SP8319

30% 2"x2" 70% 1"x1"



SP8320

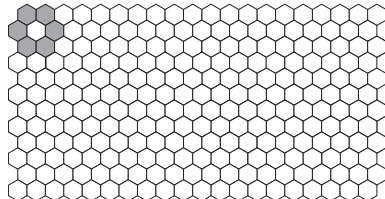
44% 2"x2" 56% 1"x1"

*Offset sheet

IMAGINE WHAT'S POSSIBLE™

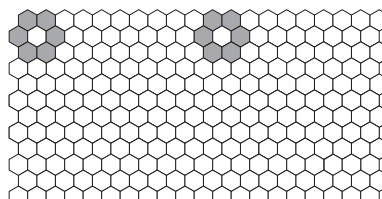
1 x 1 Hexagon Patterns

FIELD PATTERNS



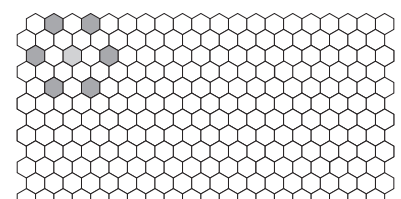
DP6001*

□ 98% ■ 2%



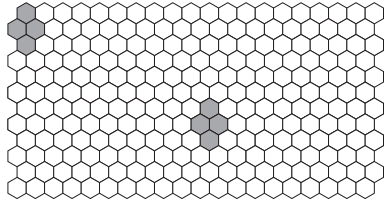
DP6002

□ 95% ■ 5%



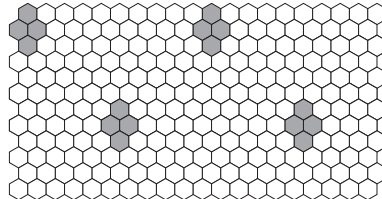
DP6003

■ 1% □ 97% ■ 2%



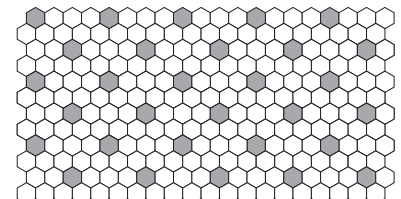
DP6004

□ 96% ■ 4%



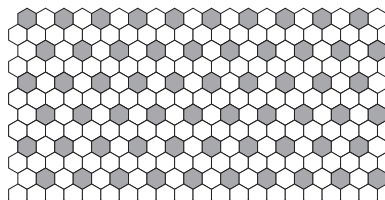
DP6005

■ 93% □ 7%



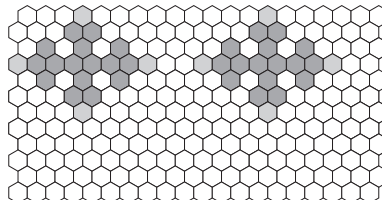
DP6006

□ 88% ■ 12%



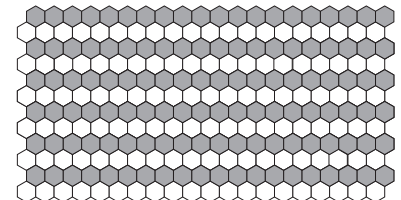
DP6007

■ 25% □ 75%



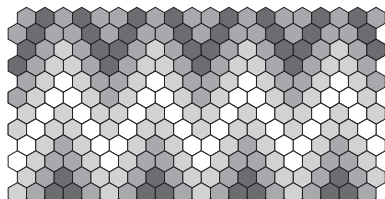
DP6009

■ 3% □ 84% ■ 13%



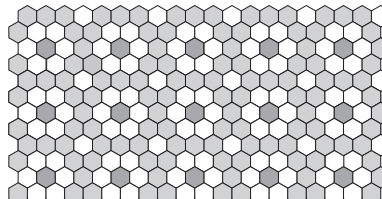
DP6015

□ 50% ■ 50%



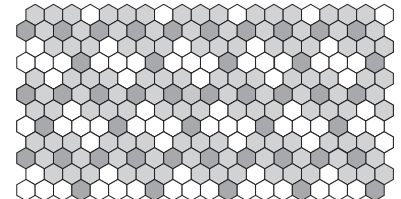
DP6017

■ 33% ■ 33% □ 17% ■ 17%



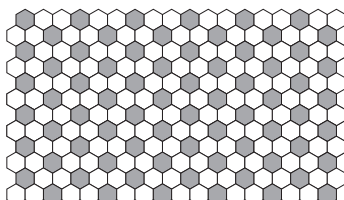
DP6018

■ 50% □ 44% ■ 6%



DP6019

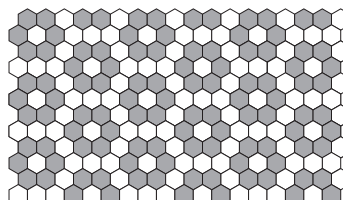
■ 50% □ 31% ■ 19%



SP8403

12x18 Sheet

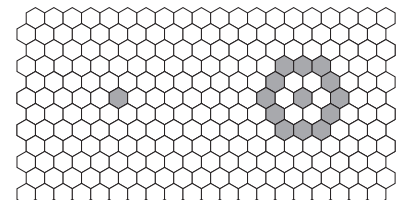
□ 67% ■ 33%



SP8404

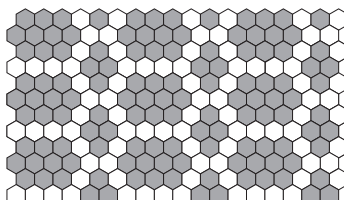
12x18 Sheet

□ 50% ■ 50%



SP8408

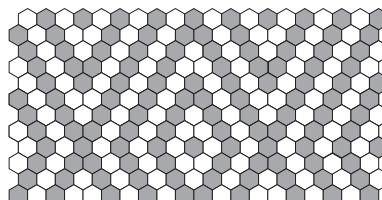
□ 94% ■ 6%



SP8409

12x18 Sheet

□ 42% ■ 58%



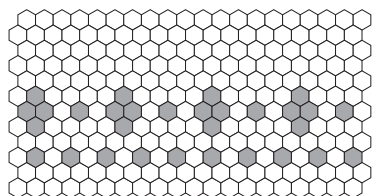
SP8410

□ 50% ■ 50%

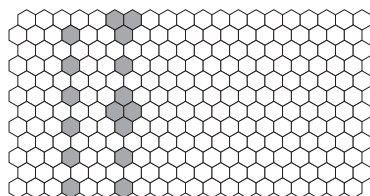
1 x 1 Hexagon Patterns

BORDERS & CORNERS

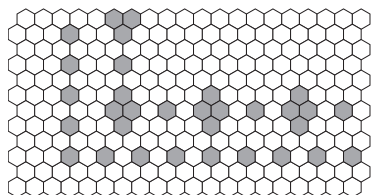
If a Hexagon border is required, you must provide a plan of the area with dimensions, because the Hexagon configuration precludes interchanging sheets.



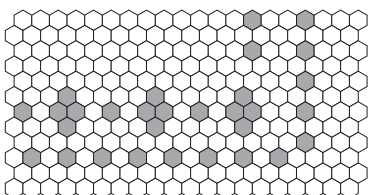
DB6501 BORDER (H) □ 87% ■ 13%



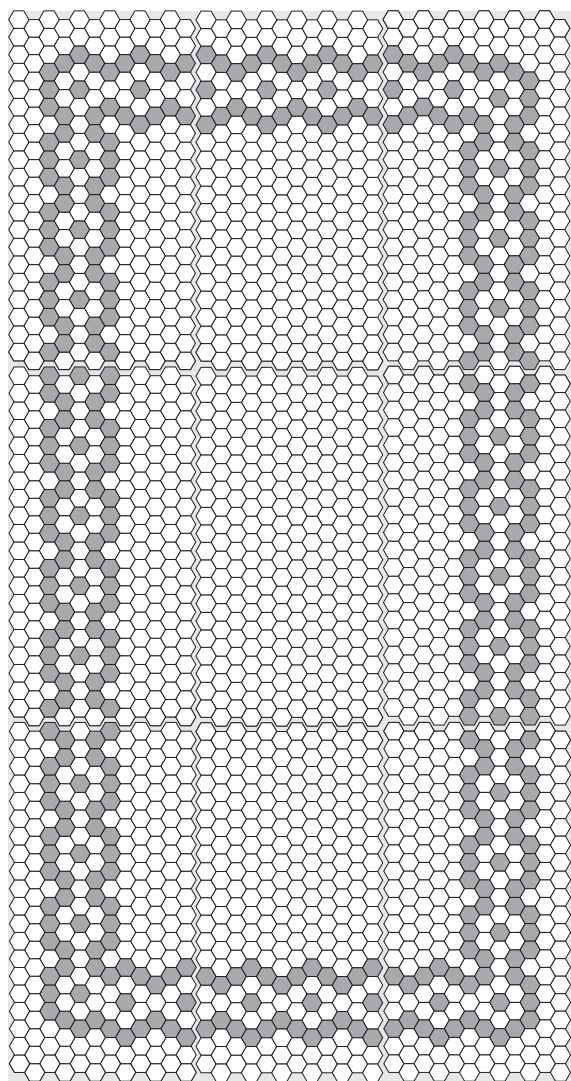
DB6501 BORDER (V) □ 93% ■ 7%



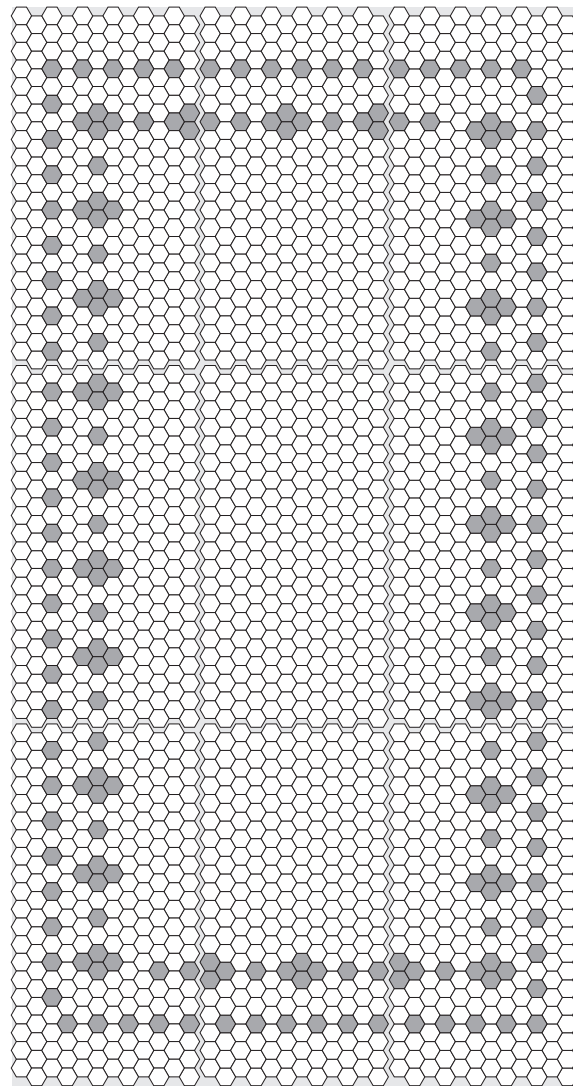
DB6501 CORNER (L) □ 87% ■ 13%



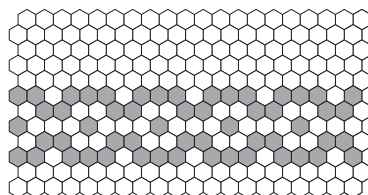
DB6501 CORNER (R) □ 87% ■ 13%



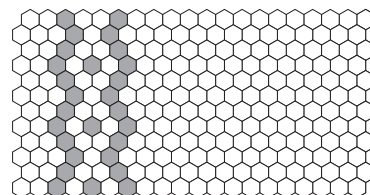
DB6503



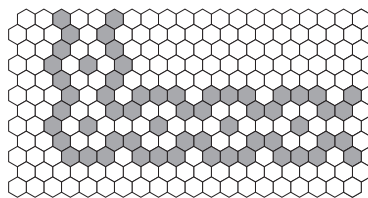
DB6501



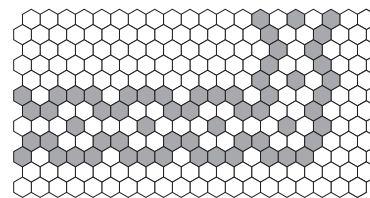
DB6503 BORDER (H) □ 77% ■ 23%



DB6503 BORDER (V) □ 89% ■ 11%



DB6503 CORNER (L) □ 75% ■ 25%



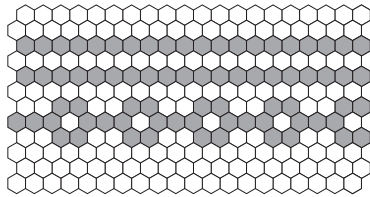
DB6503 CORNER (R) □ 75% ■ 25%

IMAGINE WHAT'S POSSIBLE™

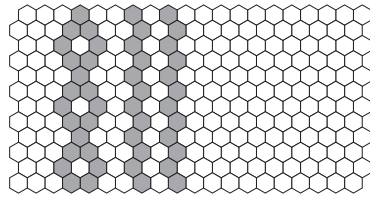
1 x 1 Hexagon Patterns

BORDERS & CORNERS

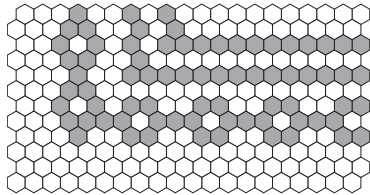
If a Hexagon border is required, you must provide a plan of the area with dimensions, because the Hexagon configuration precludes interchanging sheets.



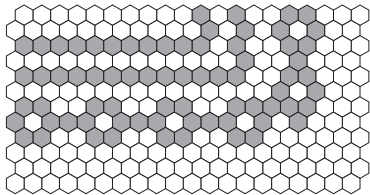
DB6504 BORDER (H) □ 69% ■ 31%



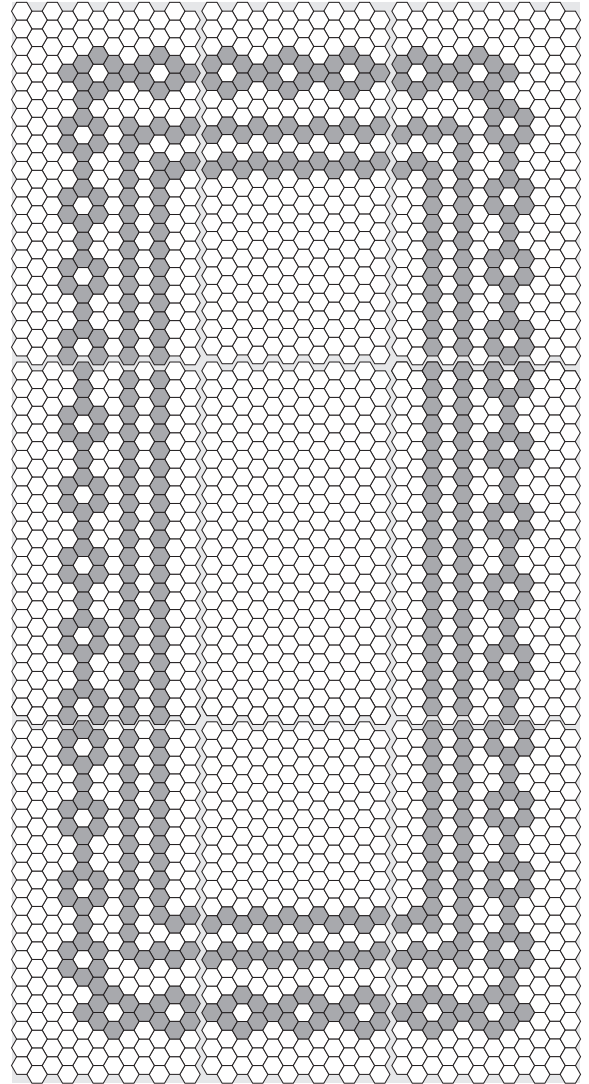
DB6504 BORDER (V) □ 81% ■ 19%



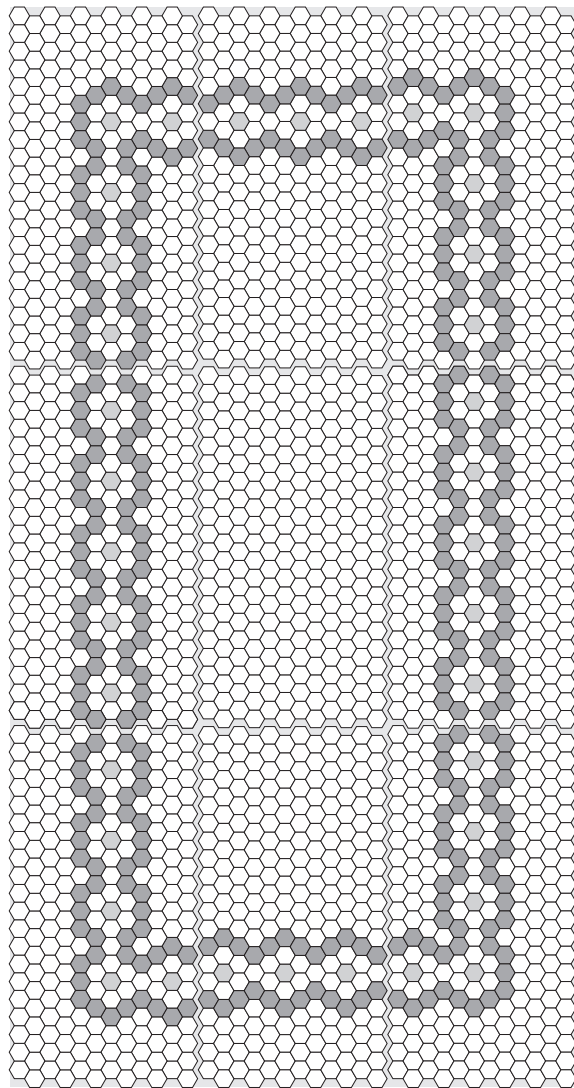
DB6504 CORNER (L) □ 69% ■ 31%



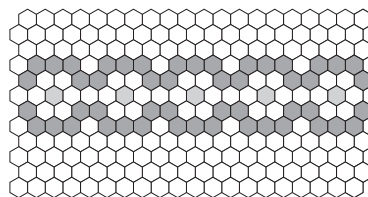
DB6504 CORNER (R) □ 70% ■ 30%



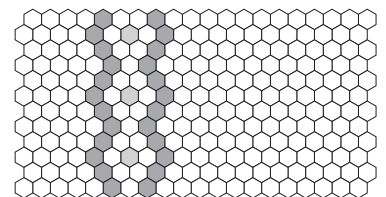
DB6504



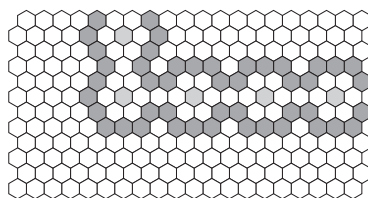
DB6505



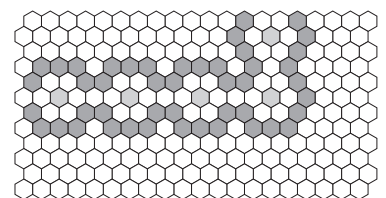
DB6505 BORDER (H) □ 77% ■ 2% ■ 21%



DB6505 BORDER (V) □ 89% ■ 1% ■ 10%



DB6505 CORNER (L) □ 79% ■ 2% ■ 19%

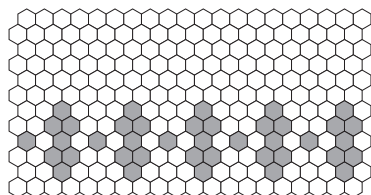


DB6505 CORNER (R) □ 79% ■ 2% ■ 19%

1 x 1 Hexagon Patterns

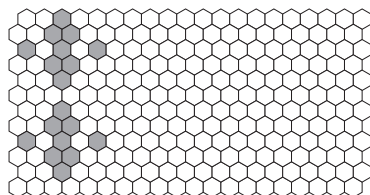
BORDERS & CORNERS

If a Hexagon border is required, you must provide a plan of the area with dimensions, because the Hexagon configuration precludes interchanging sheets.



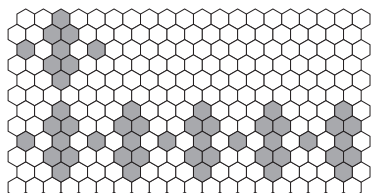
DB6507 BORDER

□ 83% ■ 17%



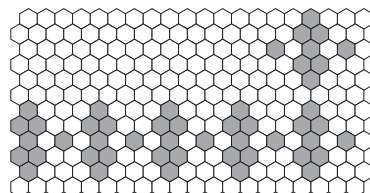
DB6507 BORDER (V)

□ 92% ■ 8%



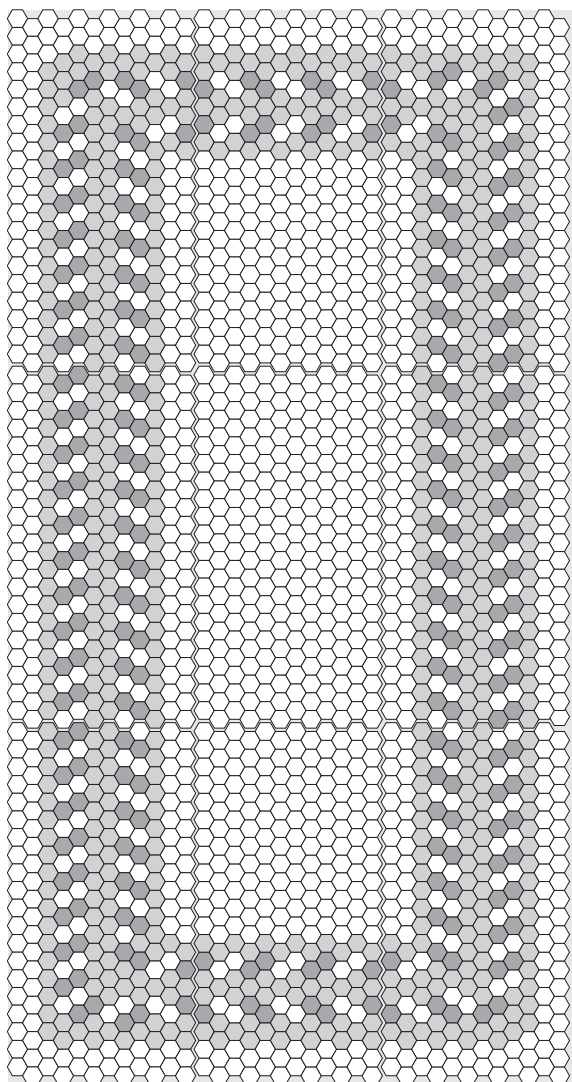
DB6507 CORNER (L)

□ 80% ■ 20%

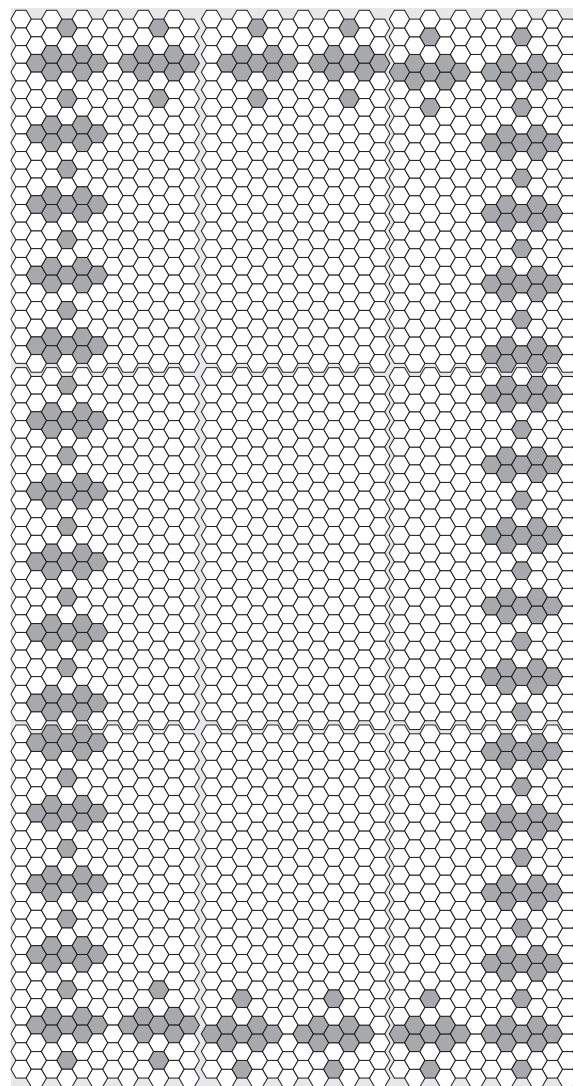


DB6507 CORNER (R)

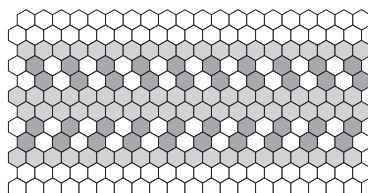
□ 80% ■ 20%



DB6509

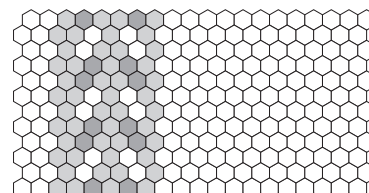


DB6507



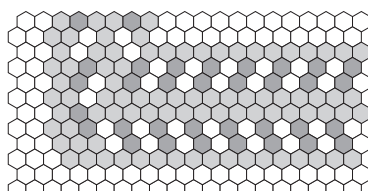
DB6509 BORDER (H)

□ 50% ■ 17% ■ 33%



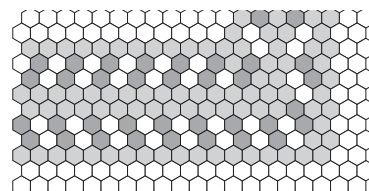
DB6509 BORDER (V)

□ 75% ■ 5% ■ 20%



DB6509 CORNER (L)

□ 50% ■ 15% ■ 35%



DB6509 CORNER (R)

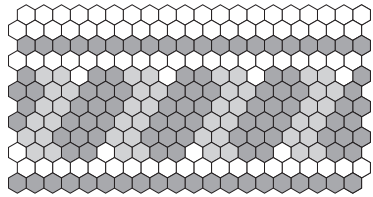
□ 50% ■ 15% ■ 35%

IMAGINE WHAT'S POSSIBLE™

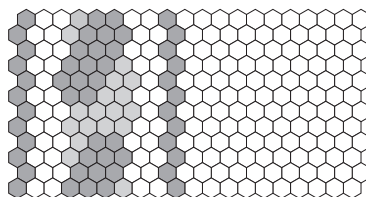
1 x 1 Hexagon Patterns

BORDERS & CORNERS

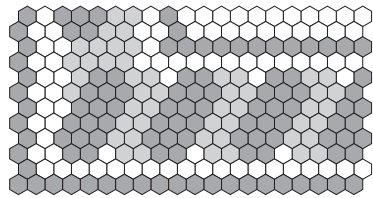
If a Hexagon border is required, you must provide a plan of the area with dimensions, because the Hexagon configuration precludes interchanging sheets.



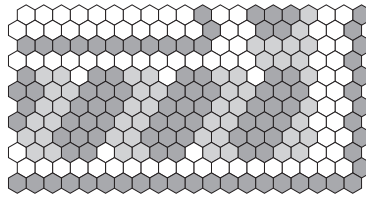
DB6510 BORDER (H) □ 37% ■ 43% ▒ 20%



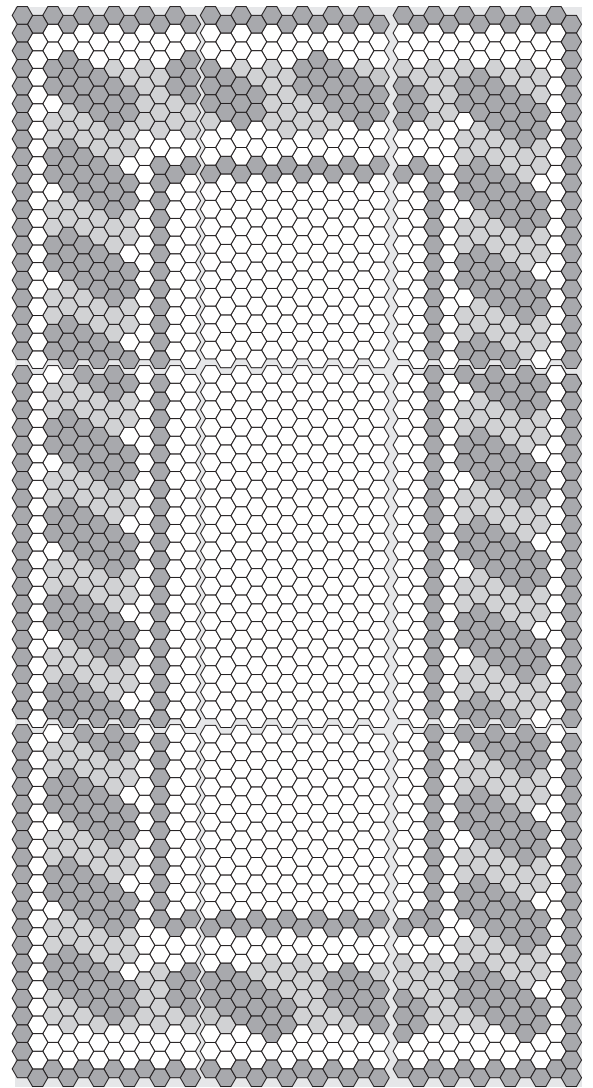
DB6510 BORDER (V) □ 72% ■ 21% ▒ 7%



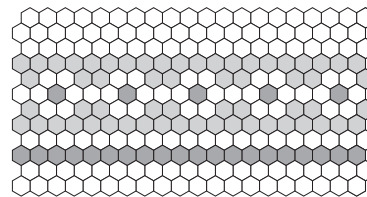
DB6510 CORNER (L) □ 38% ■ 42% ▒ 20%



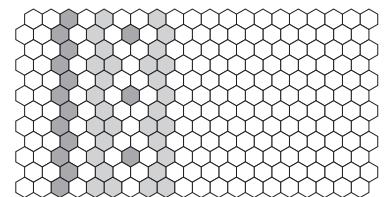
DB6510 CORNER (R) □ 36% ■ 42% ▒ 22%



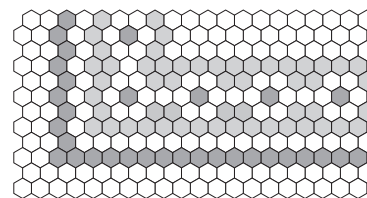
DB6510



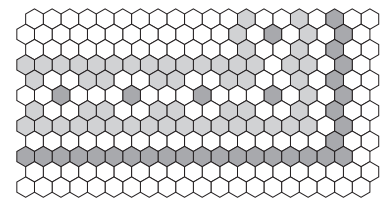
DB6511 BORDER (H) □ 65% ■ 10% ▒ 25%



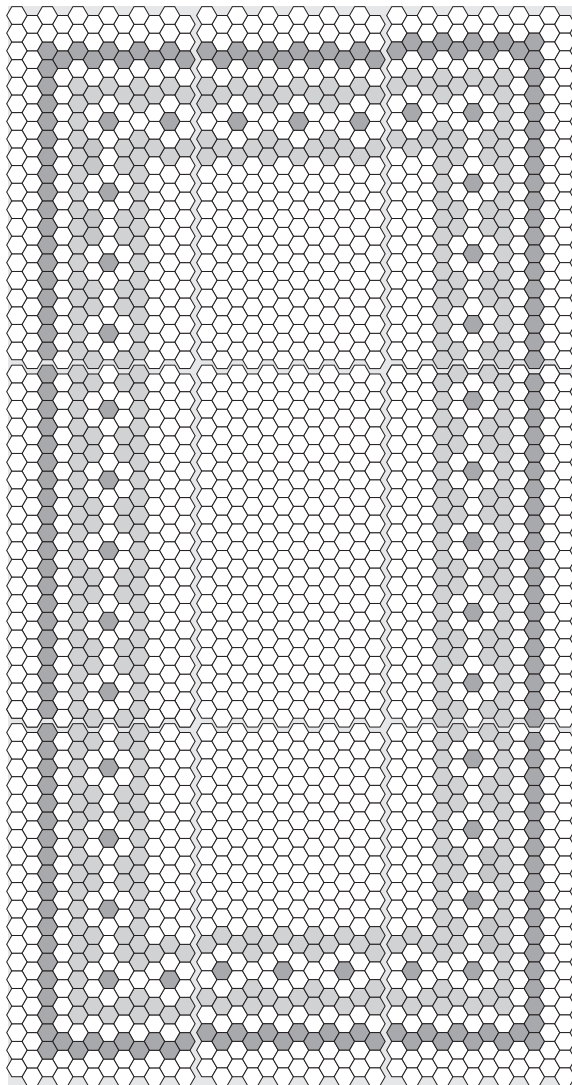
DB6511 BORDER (V) □ 80% ■ 6% ▒ 14%



DB6511 CORNER (L) □ 63% ■ 13% ▒ 24%



DB6511 CORNER (R) □ 63% ■ 13% ▒ 24%

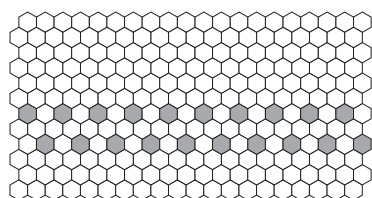


DB6511

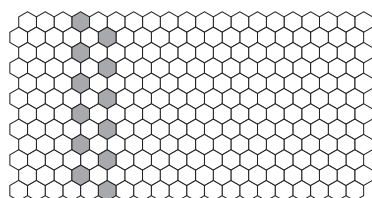
1 x 1 Hexagon Patterns

BORDERS & CORNERS

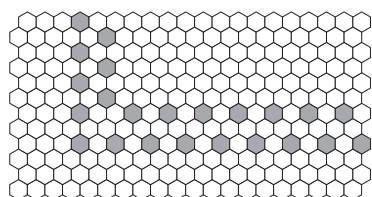
If a Hexagon border is required, you must provide a plan of the area with dimensions, because the Hexagon configuration precludes interchanging sheets.



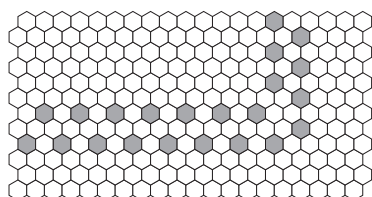
SB1402 BORDER (H) □ 92% ■ 8%



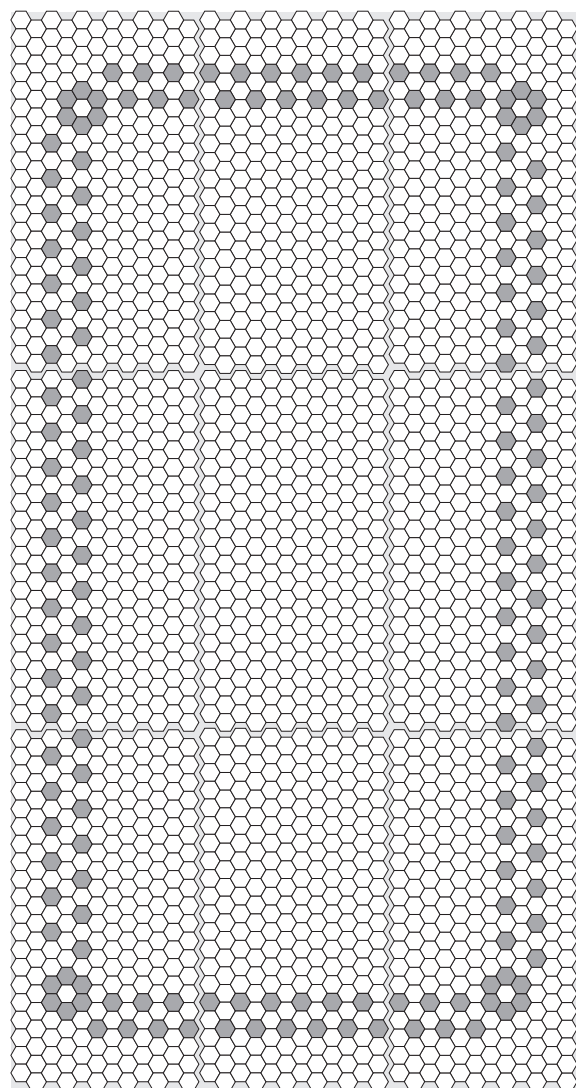
SB1402 BORDER (V) □ 95% ■ 5%



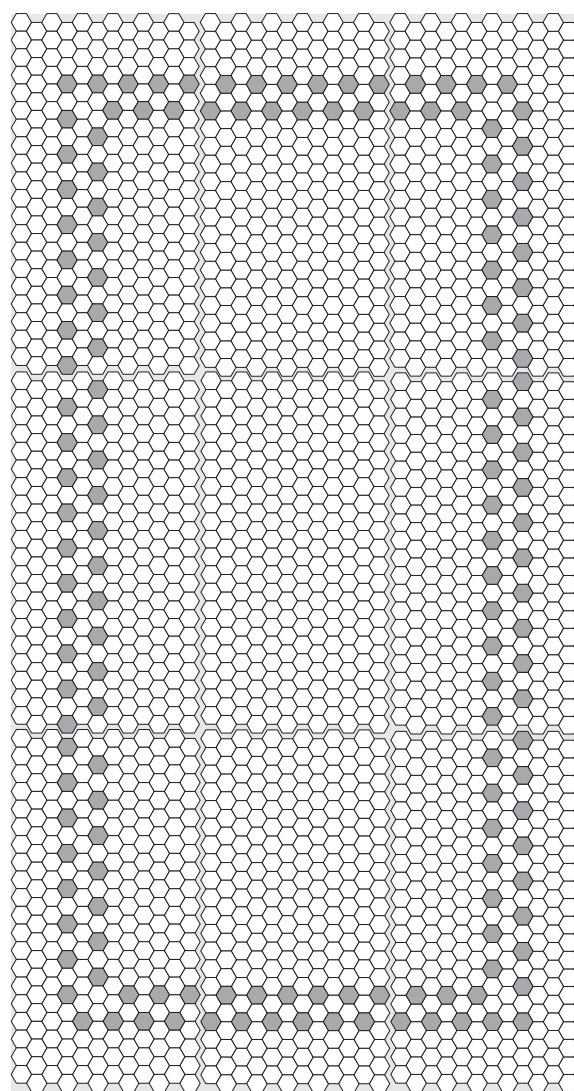
SB1402 CORNER (L) □ 90% ■ 10%



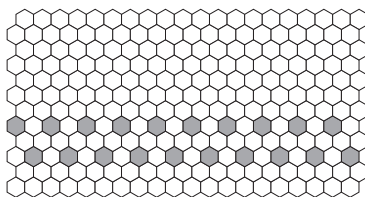
SB1402 CORNER (R) □ 70% ■ 30%



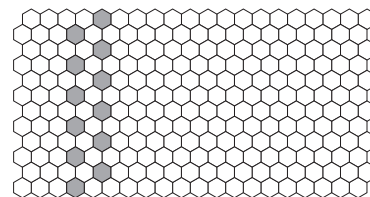
SB1402B



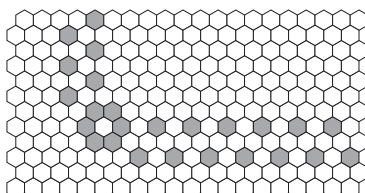
SB1402



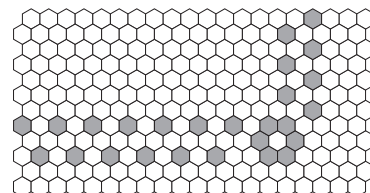
SB1402B BORDER (H) □ 92% ■ 8%



SB1402B BORDER (V) □ 95% ■ 5%



SB1402B CORNER (L) □ 90% ■ 10%



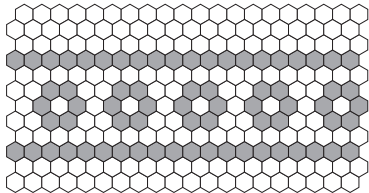
SB1402B CORNER (R) □ 89% ■ 11%

IMAGINE WHAT'S POSSIBLE™

1 x 1 Hexagon Patterns

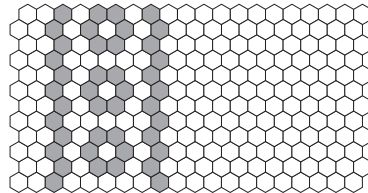
BORDERS & CORNERS

If a Hexagon border is required, you must provide a plan of the area with dimensions, because the Hexagon configuration precludes interchanging sheets.



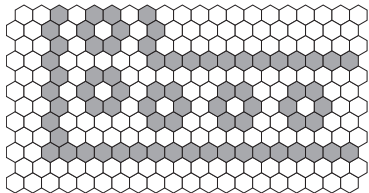
SB1405 BORDER (H)

□ 71% ■ 29%



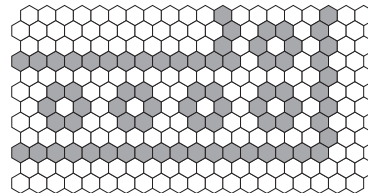
SB1405 BORDER (V)

□ 82% ■ 18%



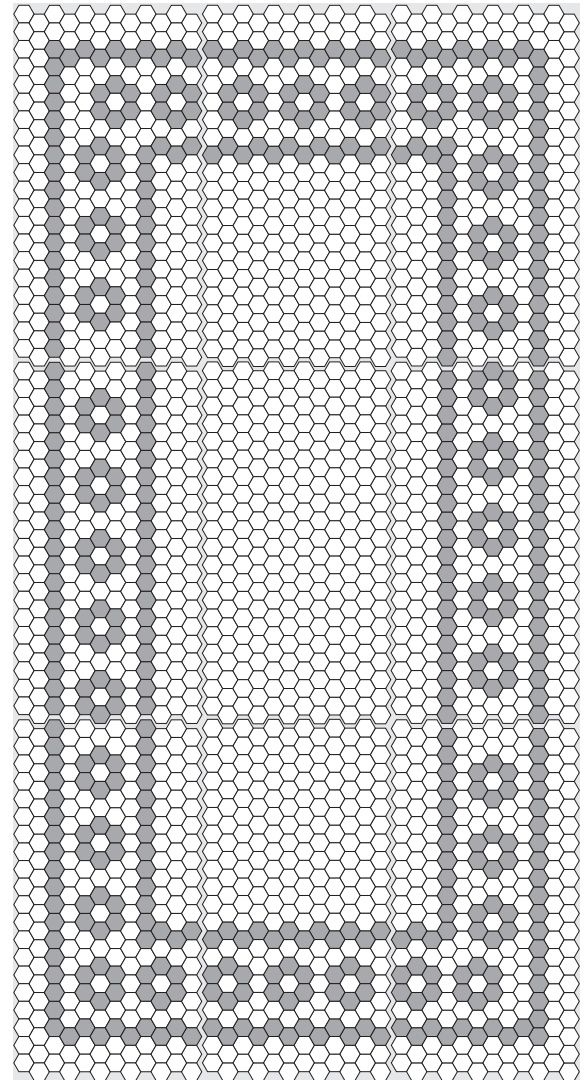
SB1405 CORNER (L)

□ 90% ■ 10%



SB1405 CORNER (R)

□ 70% ■ 30%



SB1405

How To Order

MOSAIC BORDERS AND PATTERNS

STANDARD PATTERNS

- 1 Determine the four-digit pattern number.
(Indicated at the bottom left corner of each pattern)
- 2 Select colors and determine corresponding percentages from the legend/key.
- 3 Determine the square footage required for field patterns and for border patterns.
(corner configurations will be manufactured by request or may be assembled at the installation site.)
- 4 Mail, fax, or email your request to your local Daltile representative.
- 5 Once your request is processed, your order is entered, and you will be notified of a shipping date.

CUSTOM PATTERNS

- 1 Determine a budget.
- 2 Determine size of area, tile size/type and colors.
(Use custom pattern design worksheet on page 36.)
- 3 Develop a color rendering of request
(scan ready).
- 4 Mail, fax, or email your request to your local Daltile representative.
- 5 Once your request is processed, your order is entered and a sketch with an order acceptance form is returned for your approval. Please note any discrepancies and notify Daltile immediately.

Lead Time

- Pricing: 24 hours
- Color Renderings (upon request): 1 week
- Production: 4-6 weeks

Times may vary depending on the size and complexity of the design. Typically, the manufacturing lead time for custom designs is longer than that of standard designs.

Mounting information

Pre-mounted sheets of tile speed up and simplify installation. They are self-spacing and bridge surface irregularities. Factory pre-mounted sheets are assembled together in two different ways:

Dot-Mount (standard)

Tiles are dot-mounted into 12" x 24" sheets, using a heat cured poly-vinyl chloride adhesive, which is both acid and alkaline resistant. Hex tile is bonded into 12 tile x 20 tile sheets.

ClearFace (special order)

Tiles are mounted on a removable clear film-mount sheet bonded to the tile face.

Important reminders

Use hexagon borders with hexagon field tile. Also, use a "floor plan" to avoid misinterpretations. Because of the unique shape of hexagon tiles, you'll notice a certain degree of inconsistency from one section of the pattern to another. Therefore, both a vertical and horizontal borders, right and left corners must be designed. The "floor plan" illustrates which direction the points face, which is especially helpful for corner configurations.

Order Form

The grids below represent a single standard sized sheet. The following grids are for working with modifications of standard tile patterns or original tile patterns. Single sheet repeat patterns offer the biggest savings from both a manufacturing and installation standpoint.

Specify color choices by clearly detailing all placements in the grid using an appropriate code to represent the desired pattern. (For example, color #1 = X, color #2 = +, color #3 = O, etc.)

Please photocopy this form and use it to submit custom patterns. All orders or questions may be submitted to your local Daltile representative.

2 x 4 PATTERNS

STORE _____

CUSTOMER NAME _____

DATE _____

PATTERN CODING

_____ COLOR _____ %

_____ COLOR _____ %

_____ COLOR _____ %

_____ COLOR _____ %

_____ COLOR _____ %

_____ COLOR _____ %

_____ COLOR _____ %

_____ COLOR _____ %

NOTES

IMAGINE WHAT'S POSSIBLE™

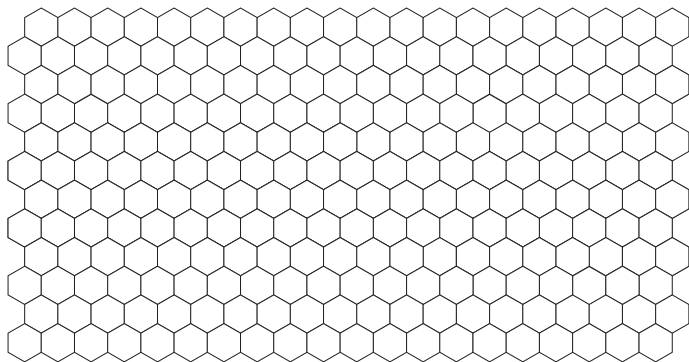
Order Form

The grids below represent a single standard sized sheet. The following grids are for working with modifications of standard tile patterns or original tile patterns. Single sheet repeat patterns offer the biggest savings from both a manufacturing and installation standpoint.

Specify color choices by clearly detailing all placements in the grid using an appropriate code to represent the desired pattern. (For example, color #1 = X, color #2 = +, color #3 = O, etc.)

Please photocopy this form and use it to submit custom patterns. All orders or questions may be submitted to your local Daltile representative.

1 x 1 HEXAGON PATTERN



STORE _____

CUSTOMER NAME _____

DATE _____

PATTERN CODING

_____ COLOR _____ %

_____ COLOR _____ %

_____ COLOR _____ %

_____ COLOR _____ %

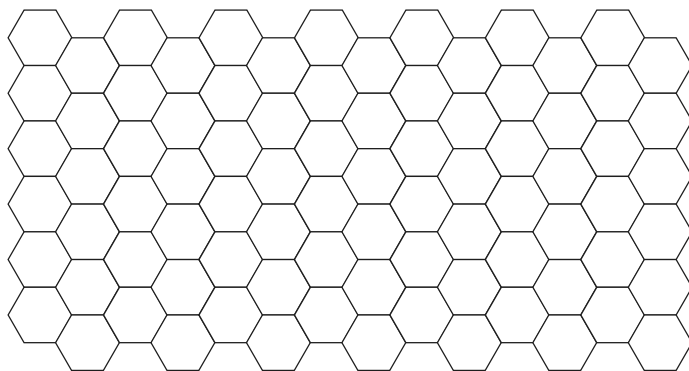
_____ COLOR _____ %

_____ COLOR _____ %

_____ COLOR _____ %

_____ COLOR _____ %

2 x 2 HEXAGON PATTERN



NOTES

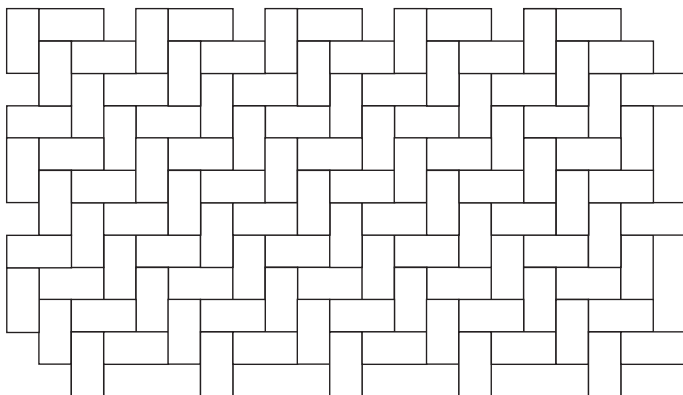
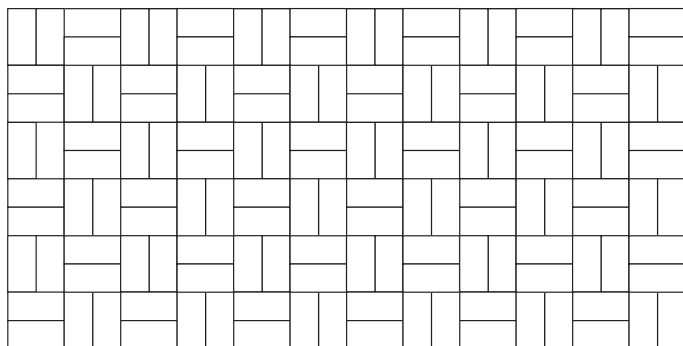
Order Form

The grids below represent a single standard sized sheet. The following grids are for working with modifications of standard tile patterns or original tile patterns. Single sheet repeat patterns offer the biggest savings from both a manufacturing and installation standpoint.

Specify color choices by clearly detailing all placements in the grid using an appropriate code to represent the desired pattern. (For example, color #1 = X, color #2 = +, color #3 = O, etc.)

Please photocopy this form and use it to submit custom patterns. All orders or questions may be submitted to your local Daltile representative.

2 x 1 PATTERNS



STORE _____

CUSTOMER NAME _____

DATE _____

PATTERN CODING

_____ COLOR _____ %

_____ COLOR _____ %

_____ COLOR _____ %

_____ COLOR _____ %

_____ COLOR _____ %

_____ COLOR _____ %

_____ COLOR _____ %

_____ COLOR _____ %

NOTES

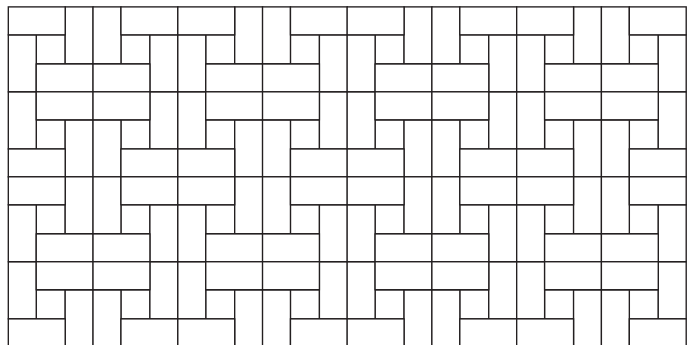
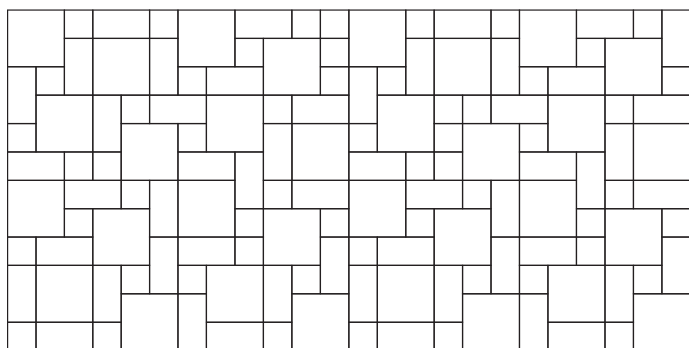
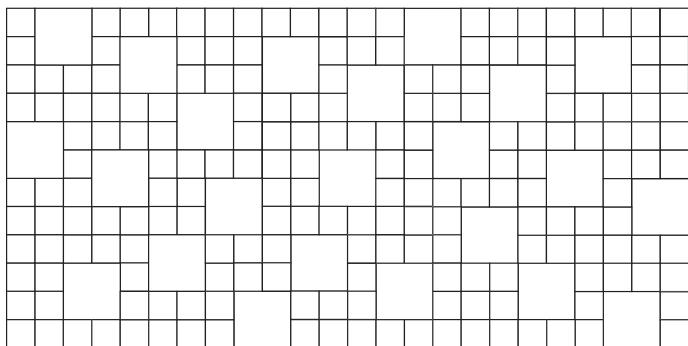
Order Form

The grids below represent a single standard sized sheet. The following grids are for working with modifications of standard tile patterns or original tile patterns. Single sheet repeat patterns offer the biggest savings from both a manufacturing and installation standpoint.

Specify color choices by clearly detailing all placements in the grid using an appropriate code to represent the desired pattern. (For example, color #1 = X, color #2 = +, color #3 = O, etc.)

Please photocopy this form and use it to submit custom patterns. All orders or questions may be submitted to your local Daltile representative.

COMBINATION PATTERNS



STORE _____

CUSTOMER NAME _____

DATE _____

PATTERN CODING

_____ COLOR _____ %

_____ COLOR _____ %

_____ COLOR _____ %

_____ COLOR _____ %

_____ COLOR _____ %

_____ COLOR _____ %

_____ COLOR _____ %

_____ COLOR _____ %

NOTES

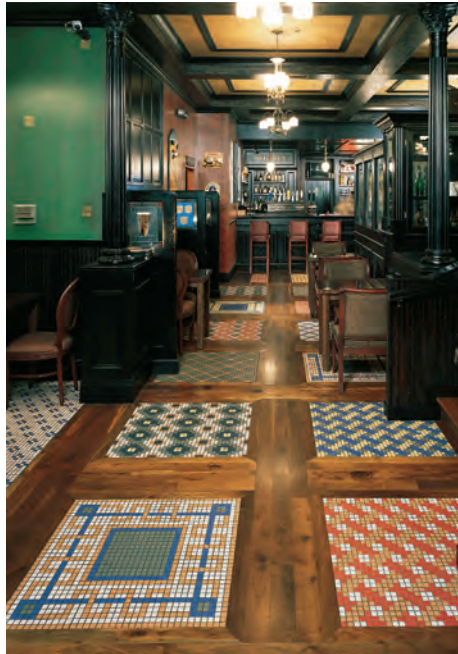
IMAGINE WHAT'S POSSIBLE™

Digital Resources



DALTILE.COM

Find tools and information on current products and design inspiration. Browse the Inspiration Gallery, download border and pattern materials, create with the Mosaic Pattern Designer and mix and match with the Tile & Stone Visualizer.



MOSAIC PATTERN DESIGNER

Design every detail, tile-by-tile, with the Mosaic Pattern Designer. Select from numerous canvas sizes, tile series, colors and premade patterns. Easily design your own pattern by selecting individual tiles in the grid. Let your creativity run wild!

daltile.com/mosaicpatterndesigner



TILE & STONE VISUALIZER

Watch tile designs come to life with the Tile & Stone Visualizer. Upload a photo of your room or choose an image from our gallery to visualize endless designs. Select wall paint and tile colors, sizes, products, patterns and grout shades for flooring and backsplashes.

daltile.com/tilestonevisualizer



7834 C. F. Hawn Freeway | Dallas, TX 75217 | 877.556.5728 | Daltile.com

©2017 Daltile (10/17)