

6.5mm | 20 mil
ASHER BEND™
RIGID CLICK

PROSERIES™
LUXURY VINYL FLOORING
daltile



SuperGuardX™
REINFORCED SHIELD

6.5mm | 20 mil

ASHER BEND™

RIGID CLICK

With an earthy color palette and a natural hardwood visual, Asher Bend™ introduces comfort into any room. Arrange this luxury vinyl flooring in a distinctive herringbone pattern for a chic composition. Asher Bend features both a 5 x 24 plank & an extra-long 9 x 71 plank for lavish looks. A Uniclic® locking system ensures that installation is seamless and quick. Prioritize coziness and security as core features of your space.

REFINED DESIGN

- 5" x 24" & 9" x 71" wood look planks
- Earthy color palette
- Multi-layer SPC rigid core with Uniclic® Locking System
- Embossed in Register surface for realistic look and feel
- Microbevel for realistic wood look and feel
- Built-in solid IXPE underlayment pad that resists mold and mildew
- 6.5 mm Thickness

PREMIUM PERFORMANCE

- SuperGuardX™ Technology
- 20 mil wear layer for heavy foot traffic
- 100% Waterproof
- 100% Virgin Vinyl
- Limited Lifetime Residential Warranty
- Limited 15 Year Commercial Warranty
- Limited 15 Year Multifamily Unit Warranty
- Limited 15 Year Light Commercial Warranty



Cover photo features Asher Bend™ Villa 9 x 71 plank on the floor.
Above photo features Asher Bend™ Manor 5 x 24 plank in a herringbone pattern on the floor.

6.5mm | 20 mil
ASHER BEND™
RIGID CLICK

SIZES:



9 x 71 Plank



5 x 24 Plank

9 x 71 WOOD LOOK PLANKS



PICKET FENCE AB21



VILLA AB22



HEARTH AB23



MANOR AB24



LODGE AB25

5 x 24 WOOD LOOK PLANKS



PICKET FENCE AB21



VILLA AB22



HEARTH AB23



MANOR AB24



LODGE AB25

6.5mm | 20 mil

ASHER BEND™

RIGID CLICK



NOISE REDUCING



EASY TO CLEAN



100% WATERPROOF



100% VIRGIN VINYL

SPECIFICATIONS

Product Type:	SPC Rigid Core LVF
Installation:	Rigid Click
Thickness:	6.5 mm
Wear Layer:	20 mil (0.508 mm)
Finish:	SuperGuard X™ Technology
Size:	9" W x 71" L Plank 5" W x 24" L Plank
Underlayment:	Pad Attached; 1.0 mm IXPE
Bevel:	Microbevel
Embossing:	Embossed in Register EIR
Plank Variation:	8 Unique Planks
Sq. Ft./Carton:	18.6/26.51
Pieces/Carton:	24/6
Weight:	1.32/7.61 lbs per pc 31.27/45.64 lbs per carton
Warranty:	Limited 15 Year Multifamily Unit Warranty Limited 15 Year Light Commercial Warranty Limited Lifetime Residential Warranty Limited 15 Year Commercial Warranty
Installation Advisory:	Asher Bend™ click LVF uses Uniclic® Locking System; no adhesive required. See daltille.com/LVF for more recommended installation information.
Stocking Platform:	6.5 mm, 20 mil
Special Order Platform:	Additional Platforms available on special order. Minimum quantities apply. Contact your Daltille representative for additional information.
Transitions:	Click LVF transitions are offered in a Vinyl 4-in-1 Transition, Overlap Stair Nose, and Stair Cap. Can be installed with or without underlayment, when total installation is 8.0 mm or less. See daltille.com/LVF for more information.

PERFORMANCE & CHARACTERISTICS

Construction:	Commercial Grade Luxury Vinyl Flooring; 100% Virgin Vinyl
Classification:	ASTM F1700 - Class III, Type B - Embossed
Squareness:	ASTM F2421 - Passes - ± 0.010 " max
Size and Tolerance:	ASTM F2421 - Passes - Plank Length > 48 in. ± 0.080 in. (2 mm)
Thickness:	ASTM F386 - Passes - ± 0.008 inches
Dimensional Stability:	ASTM F2199 - Passes Residential & Commercial Res 0.25% / lin ft. (305 mm) avg max. Comm 0.2 % / lin. Ft. (305 mm) avg max
Static Load Limit:	ASTM F970 - Passes, Average ≤ 0.005 inches
Residual Indentation:	ASTM F1914 - Passes - Average $\Delta E < 8.0$
Resistance To Chemicals:	ASTM F925 - Passes - No more than a slight change
Resistance To Light:	ASTM F1515 - Passes - $\Delta E < 8$
Resistance To Heat:	ASTM F1514 - Passes - $\Delta E < 8$

NOTES

See daltille.com/LVF for recommended installation and care guidelines.



CERTIFIED BY
SCS Global Services

7834 C.F. Hawn Freeway,
Dallas, Texas 75217 | 1.800.933.TILE

To view the complete collection of
Daltille® products and information,
visit our website at daltille.com/LVF

PROSERIES™
LUXURY VINYL FLOORING

daltille

©2023 Dal-Tile, LLC (8/23)



Six trims and moldings that are designed to coordinate with each of our existing colors within the collection.

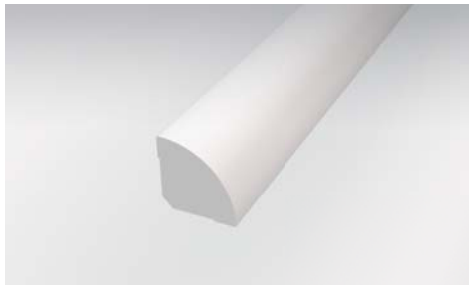
- **VRDSN** Round Stair Nose (1.75" x 94")
- **VQRND** Quarter Round (3/4" x 94")
- **VSLCAP** Slim Cap, Low Profile End Cap (1-3/8" x 94")
- **EXTSN** Extra Tall Stair Nose (2" x 94")
- **VSCAP** Flush-Mount Vinyl Stair Cap (2-3/4" x 46")
- **SLIMT** Slim Trim Transitions - Four unique trims and mouldings in one single SKU (2" x 94") (T-Molding, Hard Surface Reducer, Carpet Transition, End Cap)

SPECIAL ORDER ITEMS



Round Stair Nose

Creates a transition to the edge of the step by overlapping the flooring on the back end. Can also be installed flush on floors with an overall thickness up to 4 mm*.



Quarter Round

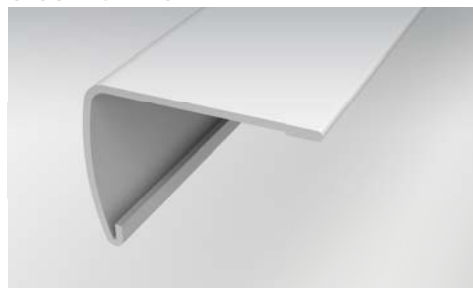
Conceals the expansion space between the wall and the flooring.



Slim Cap

Low profile end cap used to transition from flooring to carpet, masonry, sliding doors, and other exterior door jambs.

STOCKING ITEMS



Extra Tall Stair Nose

Creates a transition to the edge of the step by overlapping the flooring on the back end. Can also be installed flush on floors with an overall thickness up to 4 mm*.



Vinyl Stair Cap

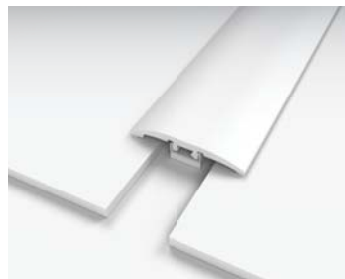
Creates a smooth and flush finish on the edges of steps by using the same vinyl flooring plank to ensure a corresponding color and texture.



4-in-1 Transition

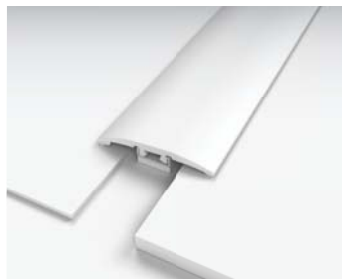
Performance Accessories' exclusive 4-in-1 transition allows you to utilize a single transition for four different applications.

EACH OF THE BELOW ARE ACHIEVED VIA THE SLIMT TRANSITION (SHOWN ABOVE)



T-Molding

Used to transition between flooring of equal heights and in doorways.



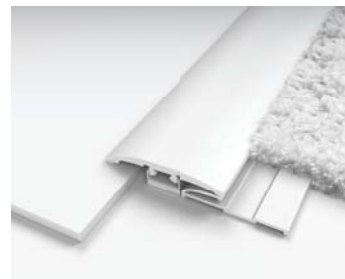
Hard Surface Reducer

Connects two floors of different heights.



End Molding

Finishing up to a threshold, sliding door, etc.



Carpet Transition

Provides a smooth transition between your hard surface floor & carpet. A carpet tap down trim must be used & is sold at your local hardware store.



*References to flooring thickness refer to the total thickness of all members of the floor installation being laid upon the subfloor. This typically is comprised of the flooring plank, e.g. Vinyl or Laminate, the underlayment, either attached or loose lay and any additional vapor barriers.

PROSERIES™
LUXURY VINYL FLOORING

