



FABRIC LOOK

KIMONA SILK™  
COLORBODY™ PORCELAIN

 daltile®  
IMAGINE WHAT'S POSSIBLE™



# KIMONA SILK™

COLORBODY™ PORCELAIN

## Woven Serenity

Surround yourself with the tranquil look of Kimona Silk™. This ColorBody™ Porcelain, available in one large-format size, was inspired by the quintessential appearance of woven silk fabric. Its classic style and 4 neutral colors make it appealing for multiple design applications and tastes. Kimona Silk's soothing fabric look and classic appeal will add a Zen-like atmosphere to any room.

- SERENE STYLE

- Woven silk visual gives it a quintessential appearance
- Soft neutral color palette includes both warm and cool colors

- INSPIRING OPTIONS

- Multiple sizes, including a large-format size, allow for several pattern options
- Coordinating trim shapes available

### FABRIC LOOK

### USAGE



FLOOR



WALL



COUNTERTOP



SHOWER  
FLOOR



EXTERIOR  
FLOOR



STEPWISE™



TRU-EDGE™



MADE IN  
THE U.S.A.



LARGE  
FORMAT



MOSAIC/  
DECO



ENCAUSTIC



TERRAZZO



PAVER



CUSTOMIZE



FLEXFIT™



PC  
COLORBODY™  
PORCELAIN



LOW HIGH

SEE CHARTS FOR FULL  
PRODUCT DETAILS

### SPECIAL FEATURES

Above and cover photos feature Water Chestnut 12 x 24 floor tile with 2 x 24 cut tile on the floor.



SIZES:



24 x 24  
Floor Tile



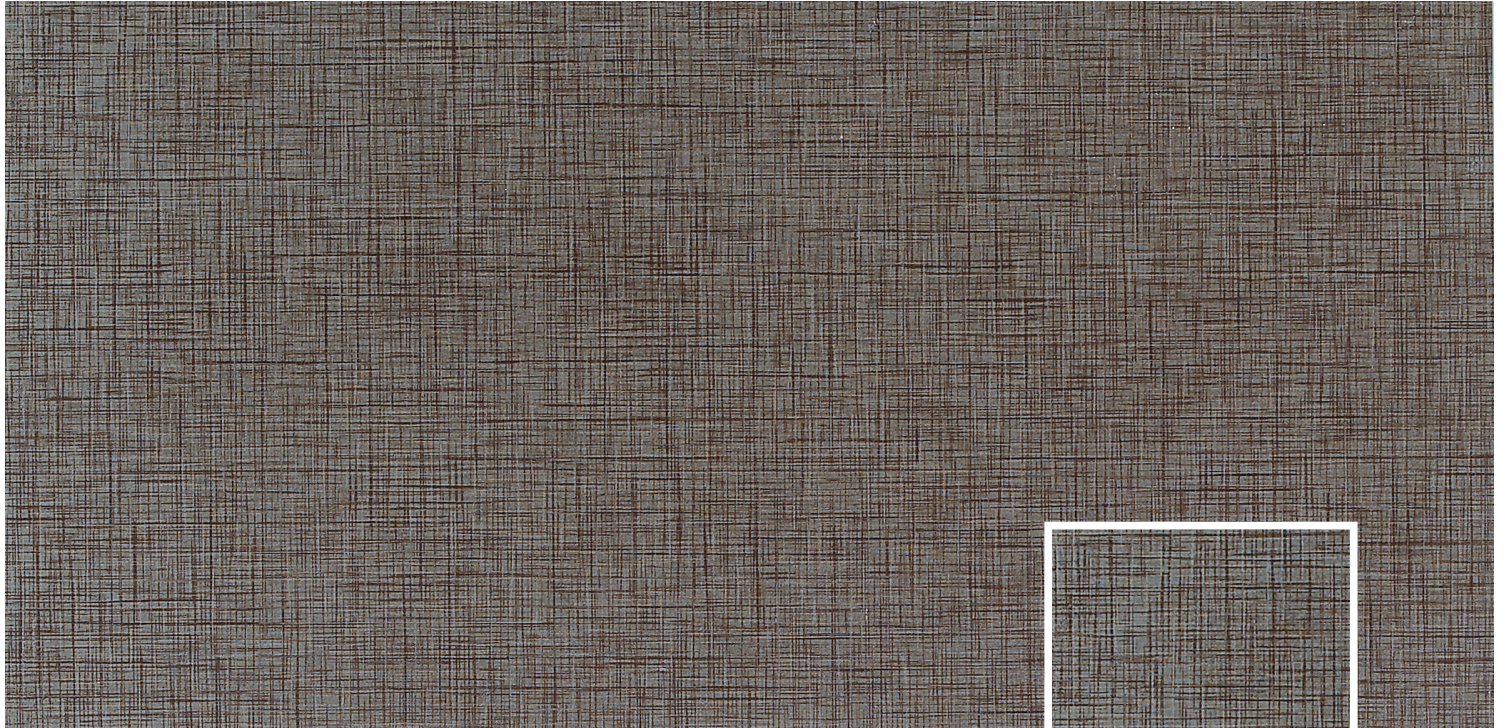
12 x 24  
Floor Tile



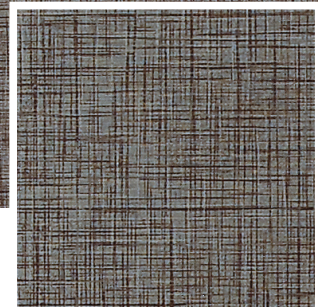
12 x 12  
Floor Tile

FINISHES: MATTE

FLOOR TILE



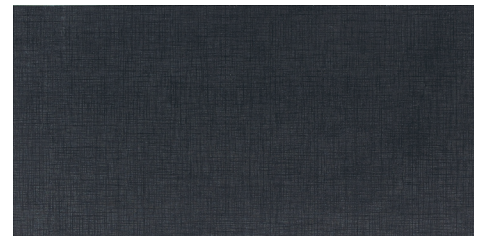
WATER CHESTNUT P323



WHITE ORCHID P320



MORNING DOVE P325



PANDA BLACK P327



SLIP RESISTANT



WATERPROOF



STAINPROOF



DENTPROOF



SCRATCH-RESISTANT



FIRE-RESISTANT



CLIMATEPRO™



SIMPLICLEAN™

# KIMONA SILK™

COLORBODY™ PORCELAIN

## FABRIC LOOK

### SIZES

			Thickness	Sq. Ft./ Carton	Pieces/ Carton
	24 x 24 Floor Tile	(23-3/8" x 23-3/8") (59.44 cm x 59.44 cm)	5/16"	15.20	4
	12 x 24 Floor Tile	(11-5/8" x 23-3/8") (29.56 cm x 59.44 cm)	5/16"	15.12	8
	12 x 12 Floor Tile	(11-5/8" x 11-5/8") (29.56 cm x 29.56 cm)	5/16"	12.22	13

### APPLICATIONS

	Target DCOF wet	Suitable
Dry & Level – Interior Floor	N/A	✓
Wet & Level – Interior Floor	≥ 0.42	✓
Shower Floors (Residential or Light Commercial)	≥ 0.42	
Exterior Floor Applications (including patios, pool decking & other wet areas with minimal footwear)	≥ 0.60	
Ramps & Inclines	≥ 0.65	
Walls/Backsplashes	N/A	✓
Countertops	N/A	✓
Pool Linings	N/A	

A DCOF value of ≥0.42 is the standard for tiles specified for level interior spaces expected to be walked upon when wet, as stated in ANSI A137.1-A326.3. For more information about DCOF and the DCOF AcuTest™, visit [daltille.com/DCOF](http://daltille.com/DCOF).

### APPLICATION NOTES:

Suitable for exterior applications (provided it is noted as suitable in the applications chart above) in freezing and non-freezing climates, when proper installation methods are followed.



PRE-CONSUMER  
RECYCLED MATERIALS




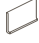

MADE IN THE U.S.A.



REVEAL IMAGING®

All or select items within this series meet the requirements for these qualifications. For more information, visit [daltille.com](http://daltille.com).


### TRIM

	Type	Number	Size	Pieces/ Carton
	Bullnose	S43C9	3 x 12	30
	Cove Base	P36C9T	6 x 12	22
	Cove Base Outcorner	PC36C9T	1 x 6	15

Cove base trim is intended to coordinate with floor tile in the standard 90-degree installation position.

Cove base and cove corner trim are suitable for non-freezing climates only.

### INSTALLATION

Grout Joint Recommendation	Shade Variation
1/8" (3/16" when multiple sizes are installed in a modular pattern and/or when tile with a length 15" or greater is installed in a staggered brick-joint pattern. Overlap should not exceed 33%).	 Medium (V2)

### PERFORMANCE CHARACTERISTICS

	ASTM#	Result
Water Absorption	C373	< 0.5%
Breaking Strength	C648	> 275 lbs.
Scratch Hardness	MOHS	8.0
Chemical Resistance	C650	Resistant

### DURABILITY

Floor Surface Wear Resistance			
1	Residential Bathrooms	3	All Residential / Light Commercial
2	All Residential Areas	④	All Residential / Commercial

### NOTES

Since there are variations in all fired ceramic and natural products, tile and trim supplied for your particular installation may not match samples. Final confirmation should be made from actual tiles and trim prior to installation. Manufactured in accordance with ANSI A137.1 standards.

Not for use on ramps. Water, oil, grease, improper drainage and certain footwear can create slippery conditions. Floor applications expected to be exposed to these conditions require extra caution in product selection.

For additional information refer to "Factors to Consider" at: [daltille.com/Factors](http://daltille.com/Factors).

Special consideration needs to be given when installing tiles greater than 15 inches. Please refer to [daltille.com/LargeTiles](http://daltille.com/LargeTiles) for more information.

Special care should be taken when grouting with dark pigmented colors. A grout release is recommended to prevent finely powdered pigments from lodging in the pores of the surface. Use of a latex modified thin-set is recommended for installation.

**ZEROTOX**  
Healthy Homes | Healthy Planet

CERTIFIED  
**PORCELAIN**  
TILE  
0.5% or less water absorption

7834 C.F. Hawn Freeway,  
Dallas, Texas 75217 | 1.800.933.TILE

To view the complete collection of  
Daltille® products and information,  
visit our website at [daltille.com](http://daltille.com).

**daltille**  
IMAGINE WHAT'S POSSIBLE™  
©2021 Daltille (4/21)