



WALL

SLIMLITE™ PORCELAIN PANELS
GLAZED PORCELAIN

 **daltile®**
IMAGINE WHAT'S POSSIBLE™



Cover photo features SlimLite™ Alloy Effects in Distressed Copper on the wall.
 Above photo features SlimLite™ Classic in Oyster on the wall.

Thin Panels with Endless Options

Available in four collections and an array of colors, these thin panels allow for endless design possibilities. Each of the collections—Classic, Coastline, Terra and Alloy Effects—boast distinct features such as a distressed metal look, vibrant colors or a modern pin dot pattern. Available in large sizes up to 39 x 118, SlimLite Panels are ideal for interior or exterior wall applications. Made of 100% natural products, the environmentally friendly thin panel design uses less energy during production and reduces your costs while maintaining quality performance standards.

- A BUREAU OF OPTIONS
 - Available in large sizes up to 39 x 118
 - Offered in four collections: Classic, Coastline, Terra and Alloy Effects
- NATURAL DESIGN
 - Made of 100% natural products
 - Can be installed over existing tile



SLIMLITE™



REVEAL IMAGING®



TRU-EDGE™

All or select items within this series meet the requirements for these qualifications.

For more information visit daltile.com.



USAGE

Floors

Walls

Countertops



W



SLIMLITE™ PORCELAIN PANELS

GLAZED PORCELAIN

ALLOY EFFECTS COLLECTION (COLORBODY™ PORCELAIN)



DISTRESSED COPPER TP48 (4)



CLOSE-UP OF TILE

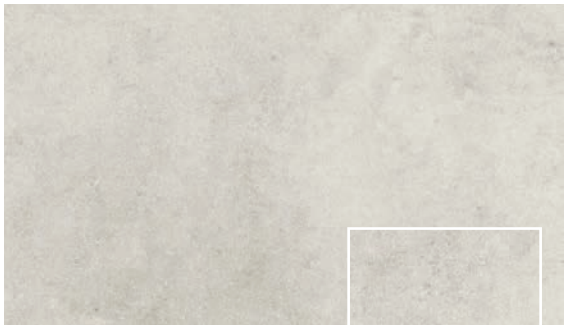


DISTRESSED ZINC TP47 (4)



DISTRESSED BRASS TP49 (4)

COASTLINE COLLECTION (GLAZED PORCELAIN)



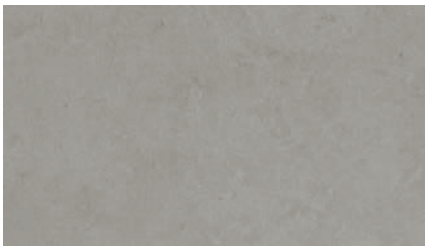
BEACH TP35 (3)



CLOSE-UP OF TILE

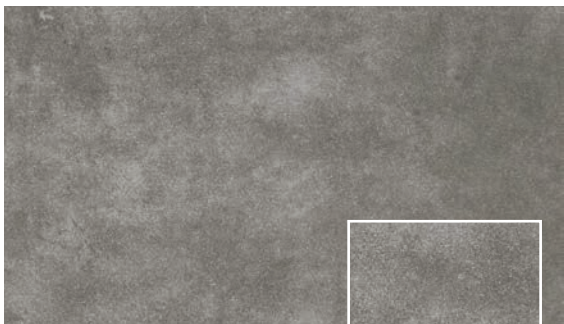


MIST TP31 (3)



FOG TP36 (3)

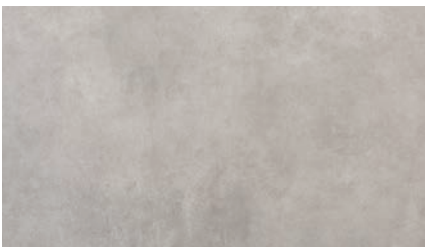
TERRA COLLECTION (GLAZED PORCELAIN)



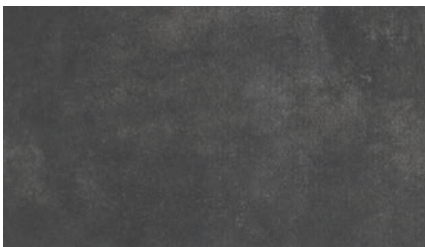
ROCK TP44 (3)



CLOSE-UP OF TILE



STONE TP54 (3)



CORE TP45 (3)

(1), (2), (3) and (4) indicate Price Groups, (1) being the least expensive.

WALL

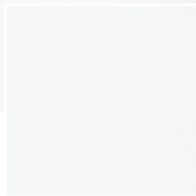
SLIMLITE™ PORCELAIN PANELS

GLAZED PORCELAIN

CLASSIC COLLECTION (COLORBODY™ PORCELAIN)



CLOUD TP17 (4)



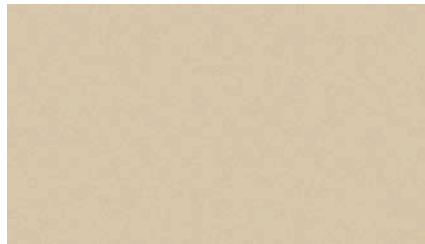
CLOSE-UP
OF TILE



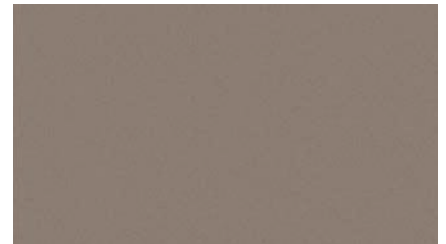
OYSTER TP01 (3)



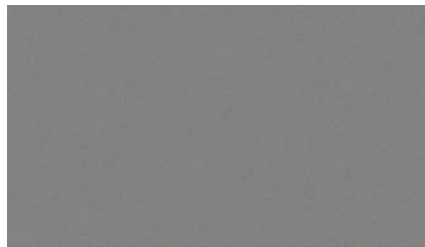
MACADAMIA TP16 (2)



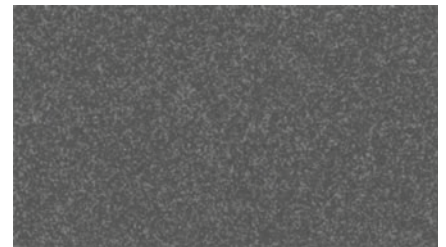
ALMOND TP05 (1)



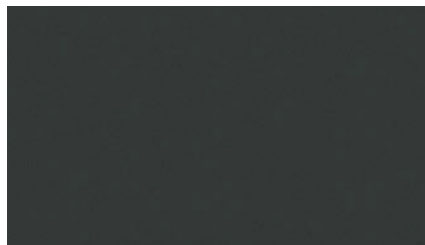
TAUPE TP12 (2)



SMOKE TP02 (1)



GRAVEL TP03 (2)








BLACK TP04 (2)

(1), (2), (3) and (4) indicate Price Groups, (1) being the least expensive.

SLIMLITE™ PORCELAIN PANELS

GLAZED PORCELAIN

SIZES

			Thickness	Sq. Ft. per Carton	Pieces per Carton
	20 x 39 Panel *	(19.68" x 39.37" Panel) (50.00 cm x 100.00 cm Panel)	3.5 mm	32.28	6
	20 x 59 Panel **	(19.68" x 59.05" Panel) (50.00 cm x 150.00 cm Panel)	3.5 mm	Up to 807.00	Up to 100
	39 x 39 Panel *	(39.37" x 39.37" Panel) (100.00 cm x 100.00 cm Panel)	3.5 mm	43.04	4
	39 x 59 Panel **	(39.37" x 59.05" Panel) (100.00 cm x 150.00 cm Panel)	3.5 mm	Up to 807.00	Up to 50
	39 x 118 Panel **	(39.37" x 118.11" Panel) (100.00 cm x 300.00 cm Panel)	3.5 mm	Up to 1,291.60	Up to 40

* Purchase will convert to full carton within size/color ordered.

** Panels are packed in a crate.

All products within the SlimLite Porcelain Panels series are available via special order only, with a lead time of 10-12 weeks.

APPLICATIONS




	Target DCOF wet	Suitable
Dry & Level – Interior Floor	N/A	
Wet & Level – Interior Floor	≥ 0.42	
Shower Floors (Residential or Light Commercial)	≥ 0.42	
Exterior Floor Applications (including pool decking & other wet areas with minimal footwear)	≥ 0.60	
Ramps & Inclines	≥ 0.65	
Walls/Backsplashes	N/A	✓
Countertops	N/A	
Pool Linings	N/A	

A DCOF value of ≥ 0.42 is the standard for tiles specified for level interior spaces expected to be walked upon when wet, as stated in ANSI A137.1-2012, Section 9.6. For more information about DCOF and the DCOF AcuTest™, visit daltile.com/DCOF.

APPLICATION NOTES:

Suitable for exterior applications in freezing and non-freezing climates, when proper installation methods are followed.

INSTALLATION

Grout Joint Recommendation	Shade Variation
Interior: 1/16" Exterior: 3/8"	 Classic (V1)  Coastline & Terra (V3)  Alloy Effects (V4)

PERFORMANCE CHARACTERISTICS

	ASTM#	Results
Water Absorption	C373	< 0.5%
Breaking Strength	C1505	> 85 lbs
Scratch Hardness	MOHS	7.0
Modulus of Rupture	C1505	> 6,000 psi
Dry Bond Strength	C1505	> 150 psi
Wet Bond Strength	C1505	> 100 psi
Back-Layer Saturation	C373	< 0.5%
Stain Resistance	C1378	Resistant
Chemical Resistance	C650	Resistant
Crazing Resistance	C424	Pass
Thermal Shock	C484	Pass
Thermal Expansion 10 ⁻⁶ / °C ⁻¹	C372	average value 4,12
Resistance to Freeze/Thaw Cycling	C1026	Resistant
Abrasion Resistance	C243	N/A

For additional information on test results, visit us at: daltile.com/information/TestResults.

NOTES

Please refer to the special handling instructions and the setting material vendor's installation specification.

Since there are variations in all fired ceramic and natural products, tile and trim supplied for your particular installation may not match samples. Final confirmation should be made from actual tiles and trim prior to installation. Manufactured in accordance with ANSI A137.3 standards.

For additional information refer to "Factors to Consider" at: daltile.com/Factors.

Random visuals enhance the natural beauty of this product. To achieve optimal results, all tile should be selected from multiple cartons and shading and graphic arrangement planned prior to installation.

Special consideration needs to be given when installing tiles greater than 15 inches. Please refer to daltile.com/LargeTiles for more information.

Use of a latex modified thin-set is recommended for installation. For more information, visit daltile.com.



DESIGNED TO HELP EARN LEED™ CREDITS. For more detailed information, visit daltilegreenworks.com.

7834 C.F. Hawn Freeway,
Dallas, Texas 75217 | 1.800.933.TILE

To view the complete collection of Daltile® products and information, visit our website at daltile.com.


IMAGINE WHAT'S POSSIBLE™

©2019 Daltile (1/19)