



FLOOR

**SPARK™**

COLORBODY™ PORCELAIN

 **daltile®**  
IMAGINE WHAT'S POSSIBLE™





Cover photo features Spark™ Toasted Luster 24 x 24 on the floor.  
Above photo features Spark™ Firelight Flicker 12 x 24 in a grid pattern on the wall.

## Make Your Space a Work of Art

If you want tile with style and a textured fabric-like surface, there's no better choice than Daltile's new Spark™ collection. Revel in the hues of this graphic contemporary ColorBody™ Porcelain tile. Ideal for both commercial and residential applications, it brings taste, sophistication and style to any design. Offered in a variety of rich complementary colors, all with a subtle luminescence, it commands attention. Create a modern and glamorous space

- ARTISTIC ELEMENTS
  - Give your space a unique and modern look inspired by textiles and concrete
- TRENDY SIZES
  - Ideal for large projects and open spaces
- COLORS THAT COMPLEMENT
  - Select from an array of cool and warm tones that pair perfectly
- HIGH-END & HARD WEARING
  - Rich aesthetic with unparalleled durability

 **PRE-CONSUMER  
RECYCLED MATERIALS**

 **LINEAR OPTIONS**

 **TRU-EDGE**

All or select items within this series meet the requirements for these qualifications. For more product information, visit [daltile.com](http://daltile.com).

 **CERTIFIED  
DALTELE  
TILE**  
0.5% or less water absorption



## FLOOR TILE



FIRELIGHT FLICKER SK50



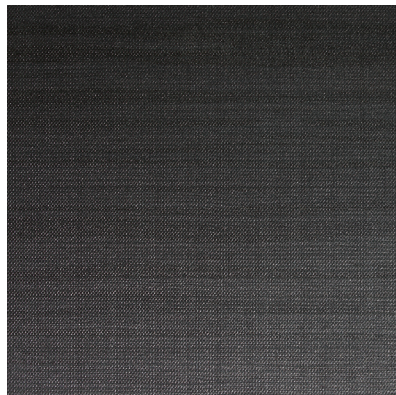
EMBER FLARE SK51



TOASTED LUSTER SK52



SMOKY GLIMMER SK53



MIDNIGHT GLOW SK54

## MOSAIC BLENDS



COOL BLEND SK55



FIRELIGHT  
FLICKER



SMOKY  
GLIMMER



MIDNIGHT  
GLOW



WARM BLEND SK56



EMBER  
FLARE



FIRELIGHT  
FLICKER



TOASTED  
LUSTER

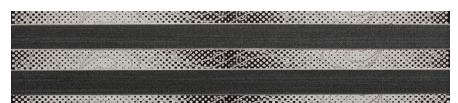
## DECORATIVE ACCENTS



FIRELIGHT FLICKER/EMBER FLARE SK57





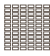


FIRELIGHT FLICKER/TOASTED LUSTER SK58






SMOKY GLIMMER/MIDNIGHT GLOW SK59

## SIZES

|   |   |  | Thickness | Sq. Ft. Per Carton | Pieces Per Carton |
|---|---|--|-----------|--------------------|-------------------|
|   | 24 x 24 Floor Tile                              | (23-1/2" x 23-1/2")<br>(59.50 cm x 59.50 cm)             | 7/16"     | 11.62              | 3                 |
|   | 12 x 24 Floor Tile                              | (11-5/8" x 23-1/2")<br>(29.60 cm x 59.50 cm)             | 7/16"     | 11.62              | 6                 |
|  | 12 x 12 Floor Tile                              | (11-5/8" x 11-5/8")<br>(29.60 cm x 29.60 cm)             | 7/16"     | 10.65              | 11                |
|   | 6 x 24 Decorative Accent*                       | (5-13/16" x 23-1/2")<br>(14.80 cm x 59.50 cm)            | 7/16"     | --                 | 6                 |
|  | 1 x 2 Mosaic<br>(Mesh-mounted on 1' x 1' Sheet) | (11-5/8" x 11-5/8" Sheet)<br>(29.60 cm x 29.60 cm Sheet) | 7/16"     | 9.68               | 10                |

## LINEAR OPTIONS™ SIZES

|  |                   |   | Sq. Ft. Per Carton | Pieces Per Carton |
|--|-------------------|---|--------------------|-------------------|
|    | 6 x 24 Floor Tile | (6" x 23-1/2")<br>(14.63 cm x 59.50 cm) | 10.65              | 11                |
|   | 4 x 24 Floor Tile | (4" x 23-1/2")<br>(9.73 cm x 59.50 cm)  | 6.46               | 10                |
|  | 2 x 24 Floor Tile | (2" x 23-1/2")<br>(4.67 cm x 59.50 cm)  | 6.66               | 20                |

Additional linear and rectangular sizes are also available.

## FLOOR APPLICATIONS

|  | Target DCOF Wet | Suitable |
|--|-----------------|----------|
| Dry & Level - Interior   | N/A             | ✓        |
| Wet & Level - Interior   | ≥ 0.42          | ✓        |
| Exterior Applications, pool decking & other wet areas with minial footwear | ≥ 0.60          |          |
| Ramps & Inclines   | ≥ 0.65          |          |

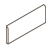


## OTHER APPLICATIONS

|                      | Suitable |
|----------------------|----------|
| Walls / Backsplashes | ✓        |
| Countertops          | ✓        |
| Pool Linings         | ✓*       |

\*Mosaic only


Suitable for exterior applications in freezing and non-freezing climates when proper installation methods are followed.

## TRIM

|   | Type                | Number    | Size   | Pieces per Carton |
|---|---------------------|-----------|--------|-------------------|
|  | Bullnose            | S-43C9    | 3 x 12 | 30                |
|  | Cove Base           | S-36C9TB  | 6 x 12 | 30                |
|  | Cove Base Outcorner | SC-36C9TB | 1 x 6  | 15                |

Bullnose, cove base, and cove base corner trim are intended to coordinate with floor tile in the standard 90-degree installation position.

## INSTALLATION

| Grout Joint Recommendation   | Shade Variation   |
|--|---|
| 1/8" (3/16" when multiple sizes are installed in a modular pattern and/or when tile with a length 15" or greater is installed in a staggered brick-joint pattern. Overlap should not exceed 33%) |  High (V3) |

## TEST RESULTS

|                     | ASTM# | Result    |
|---------------------|-------|-----------|
| Water Absorption    | C373  | < 0.5%    |
| Breaking Strength   | C648  | > 500 lbs |
| Scratch Hardness    | MOHS  | 8.0       |
| Chemical Resistance | C650  | Resistant |

## NOTES

Special consideration must be given when installing tiles greater than 15". Please refer to [daltile.com/LargeTiles](http://daltile.com/LargeTiles) for more information.

Special care should be taken when grouting with dark pigmented colors. A grout release is recommended to prevent finely powdered pigments from lodging in the pores of the surface. Use of a latex modified thin-set is recommended for installation.

Since there are variations in all fired ceramic products, tile and trim supplied for your particular installation may not match these samples. Final color selection should be made from actual tiles and trim and not from tile samples or color reproductions. Manufactured in accordance with ANSI A137.1 standards.

Water, oil, grease, etc. create slippery conditions. Floor applications with exposure to these conditions require extra caution in product selection. Not for use on ramps.

For additional information refer to "Factors to Consider" at [daltile.com/Factors](http://daltile.com/Factors).



DESIGNED TO HELP EARN LEED™  
CREDITS. For more detailed information,  
visit [daltilegreenworks.com](http://daltilegreenworks.com).



SCAN QR CODE  
FOR PRODUCT  
INFORMATION

Get a QR Code  
reader at:  
[GET.DALTILE.COM](http://GET.DALTILE.COM)



7834 C. F. Hawn Freeway,  
Dallas, Texas 75217 | 1.800.933.TILE

To view the complete collection of  
Daltile® products and information,  
visit our website at [daltile.com](http://daltile.com).



IMAGINE WHAT'S POSSIBLE™

©2017 Daltile (3/17)