

6.0 mm | 20 Mil  
**WELLSRIDGE™**  
RIGID CLICK

**PROSERIES™**  
LUXURY VINYL FLOORING  
daltile



**SuperGuardX™**  
REINFORCED SHIELD

**UNICLIC®**  
PATENTED TECHNOLOGY



6.0 mm | 20 Mil

# WELLSRIDGE™

RIGID CLICK

## REMARKABLE REALISM & DURABILITY

Pristine wood tones and crisp realism defines Wellstridge™ as a top-of-the-line luxury vinyl flooring. Unmatched in design and technology, this ultra durable, rigid core plank leads to a high quality floor that clicks together with ease and speed.

Authentic in design, these wood looks provide high-graphic variation and texture alongside enhanced performance and quick installation. Excellent thermal insulation and superior sound attenuation are just a few of the perks of this high-performing product.

## WELL-APPOINTED DESIGN

- 7-1/2" x 48" Wood look planks
- 11 Beautiful wood visuals from light gray to deep walnut
- Textured surface for realistic look and feel
- HD design with high-variation
- Multi-layer SPC rigid core with Uniclic® Locking System
- Built-in solid IXPE underlayment pad that resists mold and mildew
- 6.0 mm Thickness

## TOP-RANK DURABILITY

- Ultra-reinforced SuperGuardX™ Technology
- 20 Mil wear layer for heavy foot traffic
- Waterproof
- 100% Virgin Vinyl
- Made in the USA
- Lifetime residential warranty



6.0 mm | 20 Mil  
**WELLSTRIDGE™**  
RIGID CLICK

SIZES:



7-1/2 x 48  
Plank

7-1/2 x 48 WOOD LOOK PLANKS



ORCHID WR01



CALGARY WR02



ALCOVE WR03



WILLOW WR04



HARPER WR05



PROVIDENCE WR06



MYRTLE WR07



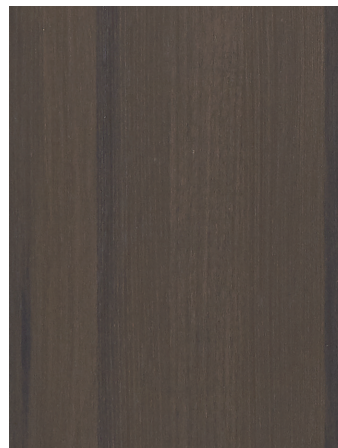
ATHERTON WR08



MAGNOLIA WR09



TERRACE WR10



RESERVE WR11

6.0 mm | 20 Mil

# WELLSTRIDGE™

RIGID CLICK

## SPECIFICATIONS

Product Type:	SPC Rigid Core LVF
Installation:	Click
Thickness:	6.0 mm
Wear Layer:	20 Mil (0.508 mm)
Finish:	SuperGuardX™ Technology
Size:	7-1/2" W x 48" L Plank
Underlayment:	Pad Attached; 1.0 mm Closed Cell
Bevel:	Painted Bevel
Plank Variation:	13 Unique Planks
Sq. Ft./Carton:	17.3
Pieces/Carton:	7
Weight	4.46 lbs per pc/ 31.23 lbs per carton
Installation Advisory:	Wellsridge™ click LVF uses Uniclic® Locking System; no adhesive required. See <a href="http://daltile.com/LVF">daltile.com/LVF</a> for more recommended installation information.
Transitions:	Click LVF transitions are offered in a Vinyl 4-in-1, Flush Mount Vinyl Stair Cap and Overlap Vinyl Stair Nose. Can be installed with or without underlayment, when total installation is 8.0 mm or less. See <a href="http://daltile.com/LVF">daltile.com/LVF</a> for more information.
Warranty:	Limited 15 Year Light Commercial Limited Lifetime Residential

## PERFORMANCE & CHARACTERISTICS

Construction:	Commercial Grade Luxury Vinyl Flooring; 100% Virgin
Classification:	ASTM F1700 - Class III, Type A - Smooth, Type B - Embossed
Squareness:	ASTM F2421 - Passes - $\pm 0.010$ " max
Size and Tolerance:	ASTM F2421 - Passes - $\pm 0.016$ in. / linear foot
Thickness:	ASTM F386 - Passes - as specified $\pm 0.005$ in
Flexibility:	ASTM F137 - Passes - 1" mandrel
Dimensional Stability:	ASTM F2199 - Passes - 0.020 in. / linear foot max
Static Load Limit:	ASTM F970 - Passes, modified at 1000 psi
Residual Indentation:	ASTM F1914 - Passes - Average less than 8% maximum single reading 10%
Resistance To Chemicals:	ASTM F925 - Passes - No more than a slight change
Resistance To Light:	ASTM F1515 - Passes - $\Delta E \leq 8$
Resistance To Heat:	ASTM F1514 - Passes - $\Delta E \leq 8$
Critical Radiant Flux:	ASTM E648 - Passes - Class 1 ( $> 0.45$ W/cm <sup>2</sup> )
Smoke Density:	ASTM E662 Part A - Passes - $< 450$

## NOTES

See [daltile.com/LVF](http://daltile.com/LVF) for recommended installation and care guidelines



CERTIFIED BY  
SCS Global Services



MADE IN THE U.S.A.

7834 C.F. Hawn Freeway,  
Dallas, Texas 75217 | 1.800.933.TILE

To view the complete collection of  
Daltile® products and information,  
visit our website at [daltile.com/LVF](http://daltile.com/LVF)

**PROSERIES™**  
LUXURY VINYL FLOORING



©2022 Dal-Tile Corporation (9/22)



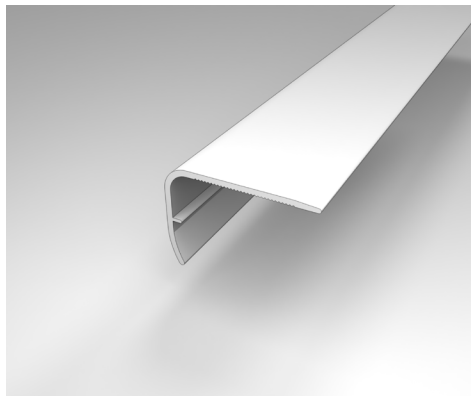
# PERFORMANCE ACCESSORIES



## WELLSTRIDGE™ RIGID CLICK TRANSITIONS

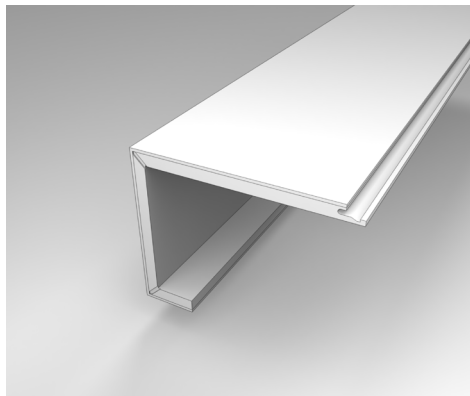
Three trims and moldings that are designed to coordinate with each of our existing colors within the collection.

- **VSNP** Overlap Stair Nose (2" x 79")
- **VSCAP** Flush-Mount Vinyl Stair Cap (2-3/4" x 44")
- **V4IN1** Four Unique Trims and moldings in one single SKU (2" x 79")  
(T-Molding, Hard Surface Reducer, Carpet Transition, End Molding)



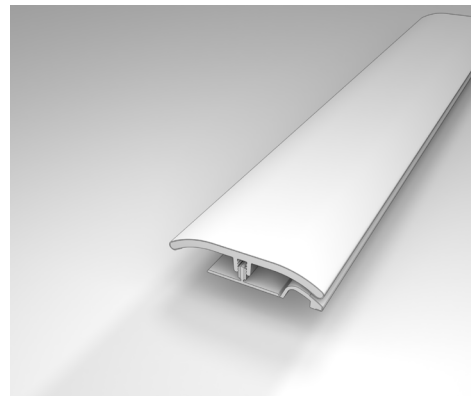
### Overlap Stair Nose

Creates a transition to the edge of the step by overlapping the flooring on the back end instead of being flush.



### Vinyl Stair Cap

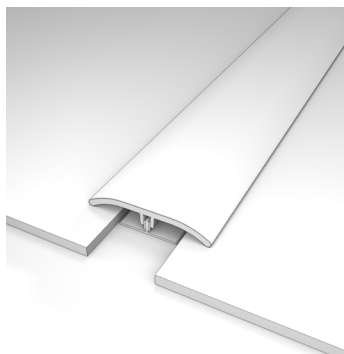
Creates a smooth and flush finish on the edges of steps by using the same vinyl flooring plank to ensure a corresponding color and texture.



### 4-in-1 Transition

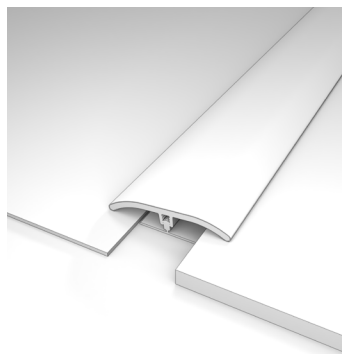
Performance Accessories' exclusive 4-in-1 transition allows you to utilize a single transition for four different applications.

## EACH OF THE BELOW ARE ACHIEVED VIA THE V4IN1 TRANSITION (SHOWN ABOVE)



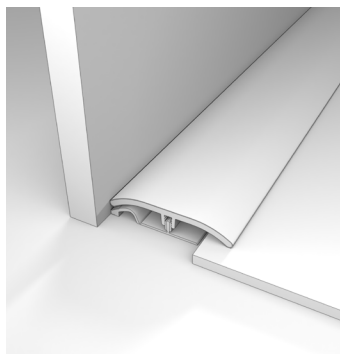
### T-Molding

Used to transition between flooring of equal heights and in doorways.



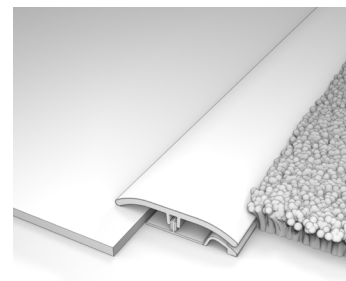
### Hard Surface Reducer

Connects two floors of different heights.



### End Molding

Creates a smooth and flush finish on the edges of steps where the flooring meets the transition.



### Carpet Transition

Provides a smooth transition between your hard surface floor and carpet.



CERTIFIED BY  
SCS Global Services

**PROSERIES™**  
LUXURY VINYL FLOORING

**dalatile**

©2022 Dal-Tile Corporation (9/22)