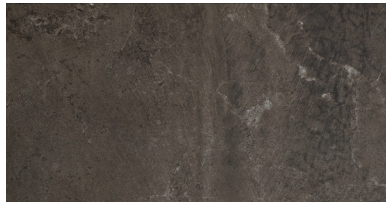




HAZE IG97



COSMO IG96



MIDNIGHT IG98

PRE-CONSUMER RECYCLED MATERIALS
MADE IN THE U.S.A.
REVEAL IMAGING®
CERTIFIED PORCELAIN TILE
0.5% or less water absorption
ZEROTOX
Healthy Homes | Healthy Planet

FLOOR/WALL
IMAGICA™
 COLORBODY™ PORCELAIN

STARBUCKS CUSTOM ITEM DESCRIPTION

Color	IG97 Haze
Color	IG96 Cosmo
Color	IG98 Midnight
UOM	Square Foot

CONTACT INFORMATION

Orders & Design: starbucks@daltile.com

Please note: Image above displays the graphic design for the custom tile detailed in this document. Samples of actual material are available upon request.

SIZE

			Thickness	Sq. Ft./ Carton	Pieces/ Carton
	12 x 24 Floor Tile	11-5/8" x 23-3/8" (29.56 cm x 59.44 cm)	5/16"	17.02	9

APPLICATIONS

	Target DCOF wet	Suitable
Dry & Level – Interior Floor	N/A	✓
Wet & Level – Interior Floor	≥ 0.42	✓
Exterior Applications, pool decking, & other wet areas with minimal footwear	≥ 0.60	
Ramps & Inclines	≥ 0.65	
Walls/Backsplashes	N/A	✓
Countertops	N/A	✓
Pool Linings	N/A	

A DCOF value of ≥0.42 is the standard for tiles specified for level interior spaces expected to be walked upon when wet, as stated in ANSI A1371-A326.3. For more information about DCOF and the DCOF AcuTest™, visit daltile.com/DCOF.

APPLICATION NOTES:

Suitable for exterior applications (provided it is noted as suitable in the applications chart above) in freezing and non-freezing climates, when proper installation methods are followed.

DAL-TILE 1-YEAR LIMITED WARRANTY (EXTENDED WARRANTIES AVAILABLE)

Dal-Tile Corporation warrants that manufactured products will be free from defect for a period of one-year from date of purchase. Defect is defined as a shortfall in the product to perform to Dal-Tile specifications as disclosed in product literature, within industry allowable tolerances as set forth in standard, national industry protocols. Dal-Tile provides detailed information in its product literature regarding appropriate tile and stone applications. Failure to comply with recommended applications voids this warranty. **THIS ONE-YEAR EXPRESS WARRANTY IS THE SOLE WARRANTY EXTENDED AND REPLACES ANY STATUTORY WARRANTIES TO THE MAXIMUM EXTENT ALLOWABLE BY LAW.** For full warranty information including implications, exclusions and limitations please visit www.Daltile.com.

**THE INFORMATION RELEASED IS A PROPOSAL FOR CLIENT CONSIDERATION PURPOSES ONLY.
 FINAL TEST RESULTS & PART NUMBERS WILL BE PROVIDED**

INSTALLATION

Grout Joint Recommendation	Shade Variation
1/8" (3/16" when installing tile with a length 15" or greater in a staggered brick-joint pattern; overlap should not exceed 33%.)	Random (V4)

Additional installation recommendations can be found in the current edition TCNA Handbook and/or NTCA Reference Manual.

PERFORMANCE CHARACTERISTICS

	ASTM#	Result
Water Absorption	C373	< 0.5%
Breaking Strength	C648	> 275 lbs
Scratch Hardness	MOHS	8.0
Chemical Resistance	C650	Resistant

For additional information on test results, visit us at: daltile.com/information/TestResults.

DURABILITY

Floor Surface Wear Resistance

1 Residential Bathrooms	3 All Residential / Light Commercial
2 All Residential Areas	④ All Residential / Commercial

CARE AND MAINTENANCE

Please refer to the "Daltile Care and Maintenance Guide" available at www.Daltile.com