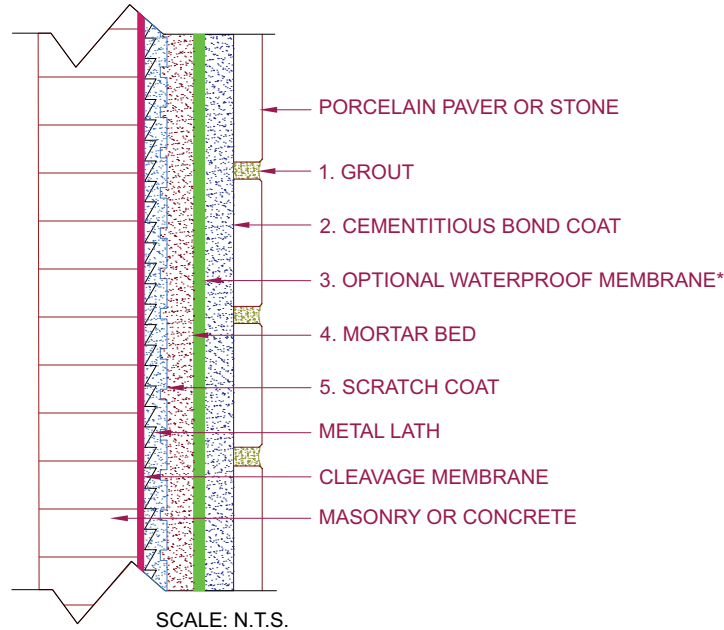


EXTERIOR WALLS

Masonry or Concrete
 Metal Lath
 Mortar Bed
 Optional Waterproof Membrane
 Porcelain Paver or Stone

Ver. 03.24.21
 Daltile Xteriors™ 25-Yr. Warranty
 Moderate Climate
 TCNA: W201
 MAPEI: MW201



*SEE MEMBRANE OPTIONS IN CURRENT TCNA HANDBOOK

MAPEI Products Assembly	ANSI	ISO 13007
1. Grout:		
A. <i>Ultracolor® Plus FA</i>	A118.7, A138.1	CG2WAF
2. Cementitious Bond Coat:		
A. <i>Granirapid® System</i>	A118.4F, A118.11, A118.15F	C2FS2P2
3. Optional Waterproof Membrane:		
A. <i>Mapelastic® Turbo</i>	A118.10, A118.12	
1) <i>Reinforcing Fabric</i>		
4. Mortar Bed:		
A. <i>Modified Mortar Bed</i>	A108.1C	
5. Scratch Coat:		
A. <i>Modified Mortar Bed</i>	A108.1C	
Flexible Sealant:		
A. <i>Mapesil® T</i>		

Minimum Performance Requirements from TCNA Guidelines

- Cementitious Grout: ANSI A118.7 or better, or ISO 13007 CG2 or better
- Cementitious Bond Coat: ANSI A118.4 or better, or ISO 13007 C2S1 or better
- Waterproof Membrane: ANSI A118.10
- Crack-Isolation Membrane: ANSI A118.12
- Movement Joints: EJ171 and ASTM C1193
- Flexible Sealant: ANSI A118.01, 3.7 and ASTM C920

Environmental Classifications

- Res6; Com6

Materials for Green/Sustainable Design

Installation Materials that meet ANSI A138.1, *The American National Standard Specifications for Sustainable Ceramic Tiles, Glass Tiles, and Tile Installation Materials*.

CAD details and/or specifications are provided as guides. They are intended to assist in the proper detailing or specifying of a project. They are not to scale or intended for construction. The guide specification must be reviewed for code compliance and edited to make it project-specific. Drawings are based on the Tile Council of North America's (TCNA) Handbook for Ceramic, Glass, and Stone Tile Installation and the Terrazzo, Tile and Marble Association of Canada's (TTMAC) Tile Installation Manual. MAPEI products are listed as options and are substituted for TCNA's and TTMAC's listed ANSI and ISO (ISO 13007) standards. For natural stone tiles, refer to Natural Stone Institute, TCNA Natural Stone Tile Selection and Installation Guide and consult stone tile supplier for suitability. Please refer to the referenced handbooks and current data sheets for complete instructions and application limitations. Some installation methods and component materials may not be referenced. MAPEI encourages the user to consult all approved resources to ensure a complete assembly.

EXTERIOR WALLS

Masonry or Concrete
Metal Lath
Mortar Bed
Optional Waterproof Membrane
Porcelain Paver or Stone

PART 1 GENERAL

1.01 SECTION INCLUDES

- A. Tile materials.
- B. Mortar materials.
- C. Setting materials.
- D. Grout materials.
- E. Waterproof membrane.
- F. Crack-isolation membrane.
- G. Flexible sealant.
- H. Penetrating stone, tile and grout sealers.
- I. Stone, tile and grout sealers, maintenance, cleaners and grout haze removers.

1.02 RELATED SECTIONS

- A. Section 04 20 00 – Unit Masonry; CMU wall substrates.
- B. Section 07 60 00 – Flashing and Sheet Metal.
- C. Section 07 92 13 – Elastomeric Joint Sealants.
- D. Section 09 34 00 – Waterproofing-Membrane Tiling.
- E. Section 09 75 00 – Stone Facing.

1.03 REFERENCES

- A. American National Standards Institute (ANSI):
 - 1. ANSI A108 Series/A118 Series – American National Standards for Installation of Ceramic Tile.
 - 2. ANSI A108.19 – American National Standard Specifications for Gauged Porcelain Tiles and Gauged Porcelain Tile Panels/Slabs.
 - 3. ANSI A108.20 – American National Standard Specifications for Exterior Installation of Vertical and Overhead Gauged Porcelain Tiles and Gauged Porcelain Tile Panels/Slabs by the Thin-Bed Method Bonded with Improved Modified Dry-Set Cement Mortar.
 - 4. ANSI A137.1 – American National Standard for Ceramic Tile.
 - 5. ANSI A137.3 – Standard Specification for Gauged Porcelain Tile and Gauged Porcelain Tile Panels/Slabs.
 - 6. ANSI A138.1 – American National Standard Specifications for Green Squared Certification for Tiles and Installation Materials.
- B. ASTM International (ASTM):
 - 1. ASTM A1064 – Standard Specification for Carbon-Steel Wire and Welded Wire Reinforcement, Plain and Deformed, for Concrete.
 - 2. ASTM C144 – Standard Specification for Aggregate for Masonry Mortar. Jobsite mix.
 - 3. ASTM C150 – Standard Specification for Portland Cement. Jobsite mix.
 - 4. ASTM C645 – Standard Specification for Nonstructural Steel Framing Members.
 - 5. ASTM C847 – Standard Specification for Metal Lath
- C. NSI (DSDM) – Dimension Stone Design Manual; Natural Stone Institute.
- D. TCNA (HB) – Handbook for Ceramic Tile, Glass, and Stone Installation; Tile Council of North America.
- E. TTMAC – Specifications Guide 09 30 00 Tile Installation Manual.
- F. International Organization for Standardization (ISO):
 - 1. ISO 13007 – Ceramic tiles – Grout and adhesives.
- G. Leadership in Energy and Environmental Design (LEED®) – U.S. Green Building Council.

1.04 SUBMITTALS

- A. Submit under provisions of Section 01 30 00 – Administrative Requirements.
- B. Product Data: Manufacturer's technical information for each product specified.
- C. Shop Drawings: Indicate tile layout, patterns, color arrangement, perimeter conditions, junctions with dissimilar materials, control and expansion joints, thresholds, ceramic accessories, and setting details.
- D. Samples: Color charts for selection of grout.
- E. Manufacturer's Certificates: Certify that products meet or exceed specified requirements. When applicable, submit a Master Grade Certificate signed by the manufacturer and the installer certifying that products meet or exceed the specified requirements of ANSI A137.1 and/or ANSI A137.3.
- F. Installation Instructions: Manufacturer's printed instructions for each product.
- G. Maintenance Data: Include recommended cleaning methods, cleaning materials, and maintenance coatings.

1.05 QUALITY ASSURANCE

- A. To ensure single-source warranty requirements and compatibility of products: Please provide cleaners, sealing and maintenance products, tile grout, setting materials, underlayments, additives, accessories and factory-prepared dry-set mortars from the same manufacturer.
- B. Installer Qualifications:
 - 1. Engage an experienced installer who has completed tile installations similar in material, design, and extent to that indicated for this project and with a record of successful in-service performance. Installer to have a minimum of five years' experience.
 - 2. Five-Star member of the National Tile Contractors Association or a Trowel of Excellence member of the Tile Contractors' Association of America.
 - 3. Installer's supervisor for the project must hold the International Masonry Institute's Foreman Certification.
 - 4. Installer employs Ceramic Tile Education Foundation Certified Installers or installers recognized by the U.S. Department of Labor as Journeyman Tile Layers.
- C. Mockups: Build mockups to verify selections made under sample submittals and to demonstrate aesthetic effects and set quality standards for materials and execution.
- D. Provide a Daltile Xteriors Hardscape Installation System Warranty. All tile products and setting materials to be purchased from a Daltile facility. For further details, see the Daltile Xteriors Hardscape System Warranty Brochure.

1.06 PRE-INSTALLATION CONFERENCE

- A. Convene one week prior to commencing work of this section.
- B. Require attendance of installation material manufacturer, tile supplier, tile installer and installers of related work. Review installation procedures and coordination required with related work.
- C. Meeting agenda includes but is not limited to:
 - 1. Tile and installation material compatibility.
 - 2. Grouting procedure.
 - 3. Maintenance and cleaning products and methods.
 - 4. Surface preparation.

1.07 DELIVERY, STORAGE AND HANDLING

- A. Deliver and store packaged materials in original containers with seals unbroken and labels intact until time of use. Prevent damage or contamination to materials by water, freezing, foreign matter and other causes.
- B. Protect setting materials from freezing and overheating in accordance with manufacturer's instructions.
- C. Store tile and setting materials on elevated platforms, under cover and in a dry location and protect from contamination, dampness, freezing and overheating.
- D. Do not use frozen materials unless specifically allowed by manufacturer.
- E. Deliver and store materials on site at least 24 hours before work begins.
- F. Provide heated and dry storage facilities on site.

1.08 ENVIRONMENTAL REQUIREMENTS

- A. Comply with requirements of referenced standards and recommendations of material manufacturers for environmental conditions before, during, and after installation.
- B. Maintain environmental conditions and protect work during and after installation to comply with referenced standards and manufacturer's printed recommendations.
- C. For Exterior Applications:
 - 1. Build a temporary shelter and when needed use indirect auxiliary heaters to maintain an adequate temperature level in the working environment and surfaces.

2. Exhaust temporary heaters to exterior to prevent damage to the work or injury to personnel from carbon monoxide emissions.
3. Maintain substrate and ambient temperatures in tiled areas between 50°F (10°C) and 95°F (35°C) during installation and for at least 7 days after completion, unless otherwise indicated in the product instructions and/or ANSI A108 installation standards.

PART 2 PRODUCTS

2.01 MANUFACTURERS

- A. Acceptable Manufacturer:

MAPEI Corporation

1144 E. Newport Center Dr.
Deerfield Beach, FL 33442

www.mapei.us

Toll-Free Tel.: 1-800-992-6273

Fax: 954-246-8805

Contact Mike Granatowski at (949) 212-2363 or email mgranatowski@mapei.com

- B. Acceptable Manufacturer:

Daltile Corporation

7834 C.F. Hawn Freeway
Dallas, TX 75217

www.daltile.com/xteriors

Contact Daltile Customer Service at (800) 449-3591, Fred Davis at (469) 964-3246 or email fred.davis@daltile.com

- C. Requests for substitutions will be considered in accordance with provisions of Section 01 60 00 – Product Requirements.
- D. Substitutions: Not permitted.

2.02 TILE MATERIALS

- A. Subject to conformity with enclosed requirements, provide products coming from the following manufacturer.

1. Daltile Xteriors Hardscape Program.

	Area:	Area:	Area:	Area:
Collection				
Size				
Color				
Finish				
Rectified (Y/N)				
Product Number				
Trim (Y/N)				

2.03 MORTAR BED ACCESSORY MATERIALS

- A. Portland Cement Mortar (Thick-Set) Installation Materials: ANSI A108.02.

1. Cleavage Membrane: Asphalt felt, ASTM D226, Type I (No. 15); or polyethylene sheeting, ASTM D4397, 4.0 mils (0.1 mm) thick.
2. Expanded Metal Lath: Diamond-mesh lath complying with ASTM C847.
 - a. Base Metal and Finish for Interior Applications: Uncoated or zinc-coated (galvanized) steel sheet, with uncoated steel sheet painted after fabrication into lath.
 - b. Base Metal and Finish for Exterior Applications: Zinc-coated (galvanized) steel sheet.
 - c. Configuration over Studs and Furring: Flat.
 - d. Configuration over Solid Surfaces: Self-furring.
 - e. Weight: 2.5 lbs./sq. yd. (1.4 kg/m²).
 - f. Weight: 3.4 lbs./sq. yd. (1.8 kg/m²).

2.04 MORTAR BED / RENDER COAT MATERIALS

- A. Thick-Bed (Dry-Pack) and Render Mortar: Pre-blended polymer-modified, dry-pack, scratch coat and wall render, and concrete patch; can be applied at 1/4 inch to 2 inches (6 mm to 5 cm), ANSI A108.1C.
 - 1. Product: MAPEI, *Modified Mortar Bed*.

2.05 SETTING MATERIALS

- A. Improved Modified Dry-Set Cement Mortar for Large and Heavy Tile, Rapid-Setting: ANSI A118.4F, ANSI A118.11, ANSI A118.15F, and ISO 13007 C2FS2P2.
 - 1. Product: MAPEI, *Granirapid System*.

2.06 GROUT MATERIALS

- A. High-Performance Cement Tile Grout: For grout joints from 1/16 inch to 3/4 inch (1.5 mm to 19 mm), ANSI A118.7 and ISO 13007 CG2WAF.
 - 1. Product: MAPEI, *Ultracolor Plus FA*.

2.07 WATERPROOF/CRACK-ISOLATION MEMBRANES (OPTIONAL: TYPE OF PROJECT DICTATES USE)

- A. General: Manufacturer's standard product that complies with ANSI A118.10 and ANSI A118.12, and is recommended by the manufacturer for the application indicated. Include reinforcement and accessories recommended by manufacturer.
 - 1. Product: Products from MAPEI.
- B. Cementitious-Binder-Based Membrane: Rapid-drying, two-component, waterproofing and crack-isolation membrane, suitable for steam showers, IAPMO-listed, ANSI A118.10 and ANSI A118.12.
 - 1. Product: MAPEI, *Mapelastic Turbo*.
 - a. With MAPEI, *Reinforcing Fabric*.

2.08 FLEXIBLE SEALANT

- A. 100%-Silicone Sealant: Heavy-traffic expansion and movement joints, horizontal and vertical complying with ASTM standards; ASTM: Meets C920, Type S, Grade NS, Class 25, Use T1, T2, NT, I, M, G, A and O, and conforms to C794 adhesion properties, (#23 Clear meets ASTM C920, Type S, Grade NS, Class 50, Use NT).
 - 1. Product: MAPEI, *Mapesil T*.

2.09 GROUT RELEASE

- A. Grout Release: High-performance sacrificial coating that protects the tile surface from grout stains, improves cleanability and reduces the risk of grout haze or film residue, interior and exterior applications on all-natural stone (marble, limestone, sandstone, slate, granite, travertine, etc.), porcelain/ceramic tiles, masonry and quarry tiles.
 - 1. Product: MAPEI, *UltraCare Grout Release*.

2.10 PENETRATING STONE, TILE AND GROUT SEALERS

- A. Solvent-Based Penetrating Sealer: Natural-look, providing maximum protection against most common stains. For use on interior and exterior natural stone (marble, limestone, sandstone, slate, granite, travertine, etc.), unglazed porcelain and ceramic tiles, masonry, quarry tiles and cement grout. Can also be used as a pre-grouting sealer.
 - 1. Product: MAPEI, *UltraCare Penetrating SB Stone, Tile & Grout Sealer*.
- B. Water-Based Penetrating Sealer: Premium, natural-look, providing maximum protection for interior and exterior natural stone (marble, limestone, sandstone, slate, granite, travertine, etc.), unglazed ceramic tile and masonry. Can also be used as a pre-grouting sealer.
 - 1. Product: MAPEI, *UltraCare Penetrating Plus Stone, Tile & Grout Sealer*.
- C. Water-Based Penetrating Grout Sealer: Provides protection against staining for use with sanded and unsanded cementitious grout joints. Can also be used as a pre-grouting sealer.
 - 1. Product: MAPEI, *UltraCare Grout Sealer*.

2.11 STONE, TILE AND GROUT MAINTENANCE, CLEANERS AND GROUT HAZE REMOVERS

- A. Neutral-pH Cleaner: Highly concentrated, zero-VOC, for ceramic, porcelain and natural stone surfaces. Helps prevent soap scum buildup and hard water deposits.
 - 1. Product: MAPEI, *UltraCare Concentrated Tile & Grout Cleaner*.
- B. High-Alkaline Cleaner: Highly concentrated and degreaser that quickly removes waxes, grease, oil, light soap scum, mildew and algae stains. For areas that have been neglected or subject to heavy use.
 - 1. Product: MAPEI, *UltraCare Heavy-Duty Stone, Tile & Grout Cleaner*.
- C. Cement Grout Haze Remover: Professional-strength, water-based formulation that helps remove cement grout haze from tile, concrete and acid-resistant natural stone surfaces; acidic, low-odor and nonflammable.
 - 1. Product: MAPEI, *UltraCare Cement Grout Haze Remover*.

2.12 MIXES

- A. Proportion and mix materials in accordance with manufacturer's most current written instructions and applicable ANSI standards.

PART 3 EXECUTION

3.01 EXAMINATION

- A. Examine substrates for compliance with requirements for conditions affecting performance of the work. Refer to ANSI A108.01, ANSI A108.02 and if applicable ANSI A108.19 and/or ANSI A108.20.
- B. Do not proceed with tilework until surfaces and conditions comply with requirements indicated in reference tile installation standard and manufacturer's printed instructions.
- C. When underlayment, patching, leveling and rendering materials are needed, they must be from the setting materials supplier. For improved warranty and single-source responsibility.

3.02 INSTALLATION

- A. Install tile in accordance with manufacturer's printed instructions and the applicable requirements of ANSI A108 Series for the materials being used.
- B. Apply waterproof membrane only in dry weather, when ambient and substrate temperatures are above 40°F (4°C).
- C. Waterproofing: Install necessary components to form a watertight installation. Dry film thickness (DFT) must comply with manufacturers' recommendations.
- D. Install tile in accordance with TCNA methods specified on the drawings.
- E. Install tile in accordance with TCNA methods listed below.
 - 1. Wall Tile at _____: TCNA method W201.
- F. Expansion and Control Joints: TCNA method EJ171.
- G. Apply tile and grout cleaners, sealers and maintenance products in accordance with manufacturer's printed instructions and technical data sheets.

3.03 GROUTING

- A. Grout joints in accordance with manufacturer's instructions and ANSI A108.10.
- B. Remove standing water, dust, and foreign substances from joints to be grouted.
- C. Clean and dry tile surfaces.
- D. After grouting, remove all grout residue promptly.

3.04 PROTECTION

- A. Walls: Protect from impact, vibration and heavy hammering on adjacent and opposite walls for 14 days after installation, unless manufacturer's instructions allow a shorter period.
- B. Protect from freezing for at least 21 days after installation.

END OF SECTION