

A modern two-story house with a courtyard and pool. The house features large windows and a balcony. The courtyard has a pool, patio furniture, and umbrellas. The house is surrounded by trees and a lawn.

EXTERIOR FAÇADE SOLUTIONS

PANORAMIC
porcelain surfaces™

EXTERIOR
FAÇADE
SOLUTIONS

DREAM IT.

DESIGN IT.

WE CAN DO IT!



TABLE OF CONTENTS

1. INTRODUCTION
2. CONCEPT
3. TECHNICAL PROPERTIES & BENEFITS OF A VENTILATED FAÇADE
4. TECHNICAL PROPERTIES & BENEFITS OF PANORAMIC
5. PANORAMIC DIRECT™
 - THIN SET
 - THIN SET + MECHANICAL FIXATION
6. PANORAMIC FORMULA™
7. PANORAMIC MECHANIX™
8. PANORAMIC LINX™

1. INTRODUCTION

Daltile® has partnered with several exterior façade manufactures in the USA and around the world to be able to provide full architectural solutions for every project and budget requirement.

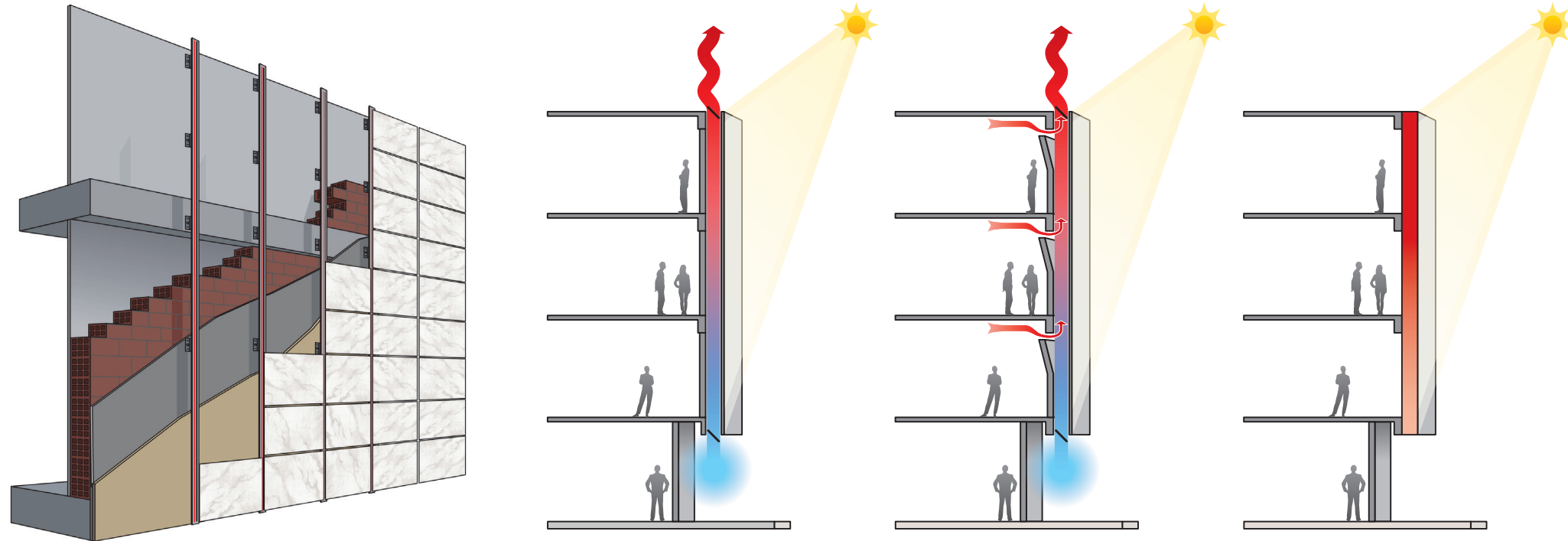
Custom color design possibilities starting at 40,000 square feet.



2. CONCEPT

A ventilated façade is a construction method whereby a physical separation is created between the outside of the façade and the interior wall of the building.

This separation creates an open cavity allowing the exchange of the air contained between the wall and the outer cladding.



3. TECHNICAL PROPERTIES & BENEFITS OF VENTILATED FAÇADES

Take full advantage of Panoramic Porcelain panels technical features on any exterior project.

ENERGY EFFICIENCIES

- Thermal Insulation – Insulation reduces temperature fluctuations leading to up to 40% in energy savings.
- UV Protection – Prevents the actual building structure from overheating, direct UV radiations and other elements.

LESS MAINTENANCE

- Dirt and other elements will not penetrate through Panoramic Porcelain panels.

BETTER SOUND CONTROL

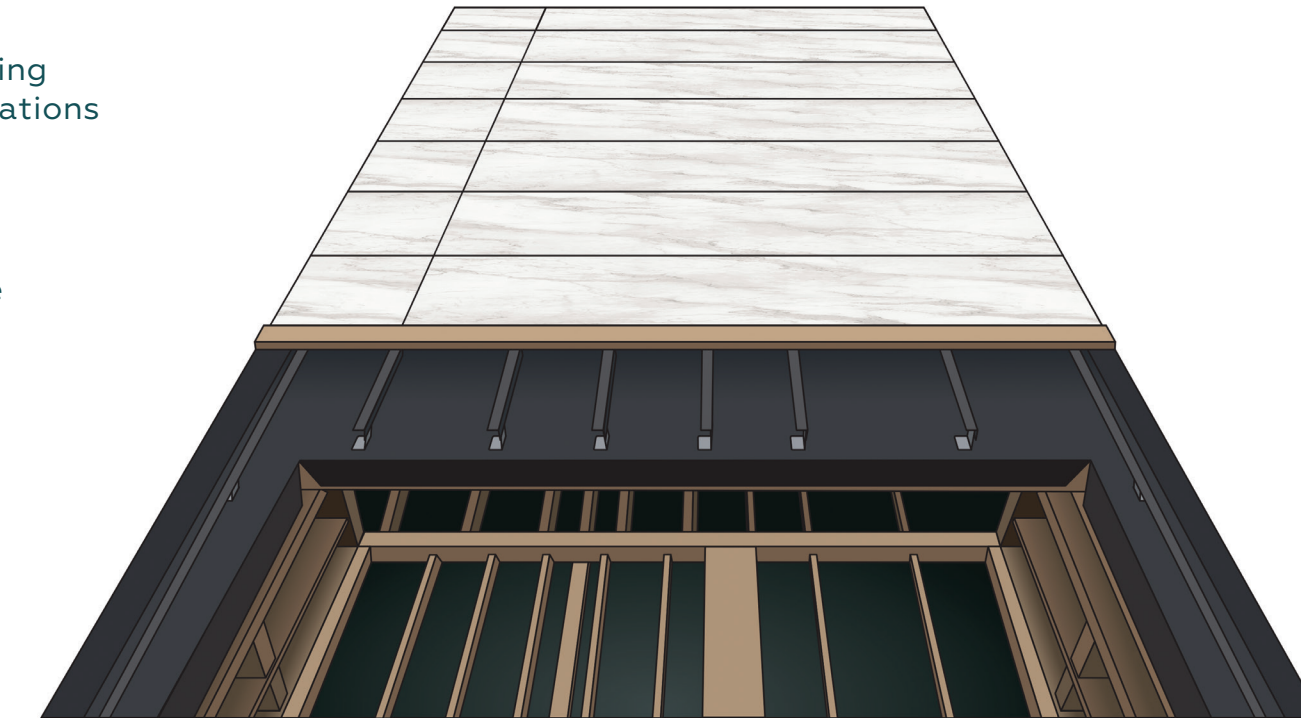
- Noise absorption from the different layers of the façade.

PERMEABILITY

- Moving air will diffuse water vapor and will eliminate the condensation effect.

WATER IMPERMEABILITY

- An air chamber prevents water infiltration and protects the building structure.



3. TECHNICAL PROPERTIES & BENEFITS OF PANORAMIC PORCELAIN SURFACES™



LIGHTWEIGHT

Using thin format slabs



SCRATCH & ABRASION RESISTANT



HIGH HEAT & FIRE RESISTANT



WATERPROOF



FREEZE-THAW RESISTANT



HYGIENIC



EASY TO CLEAN & CHEMICAL RESISTANT



100% NATURAL



100% RECYCLABLE

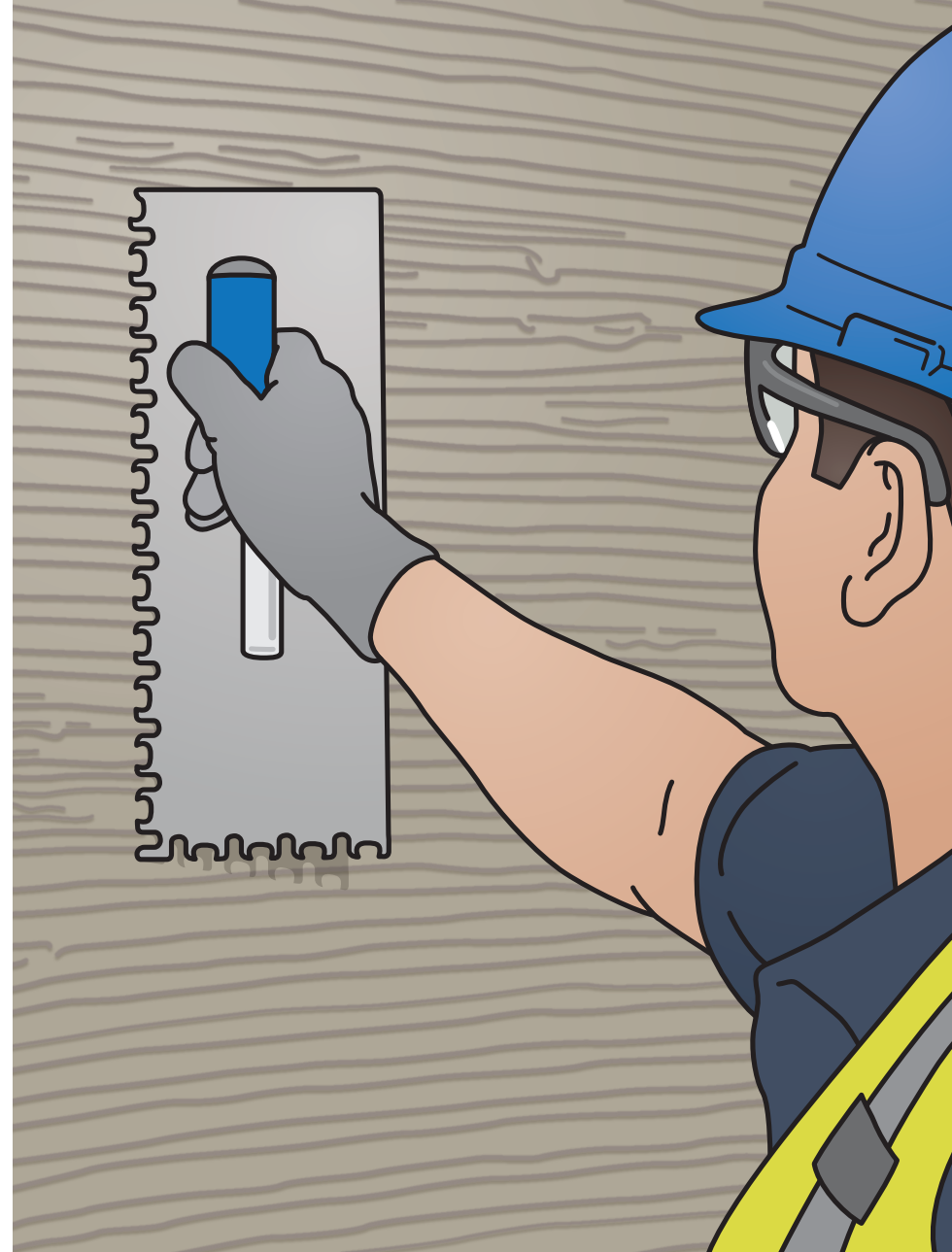


UV RESISTANT

Suitable for Exterior Applications

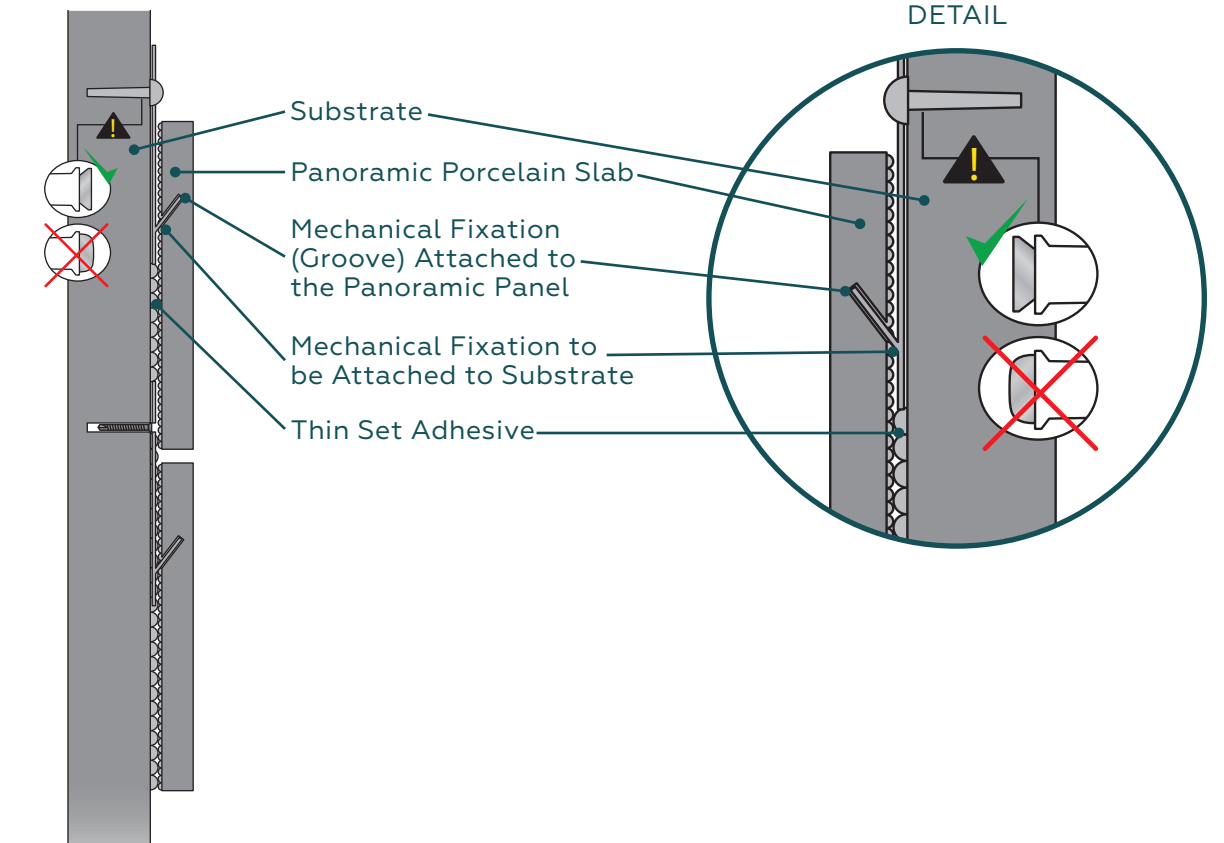
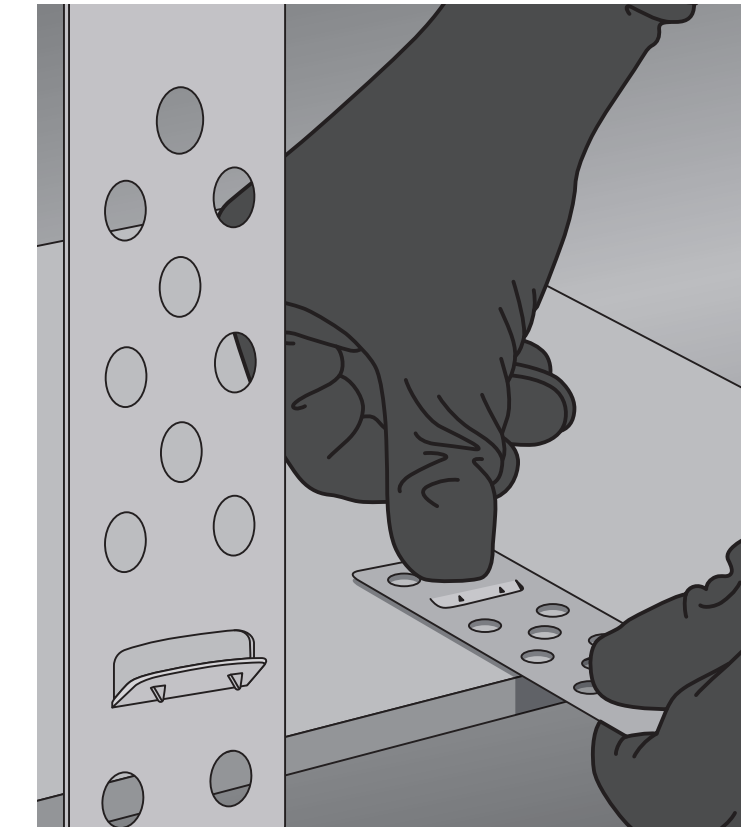
4. PANORAMIC DIRECT™

- Can be used with either 6mm or 12mm Panoramic Porcelain slabs.
- Economical and very well known method of installation.
- If necessary, we can provide installation training for large porcelain tiles.
- This bonding method it's typically used on residential and low commercial applications.
- 25-Year Installation warranty available from main thin set manufactures (Custom / Mapei).
- If necessary, we can offer mechanical fixation along with thin set bonding applications for higher applications.



PANORAMIC DIRECT™ - WITH MECHANICAL FIXATION

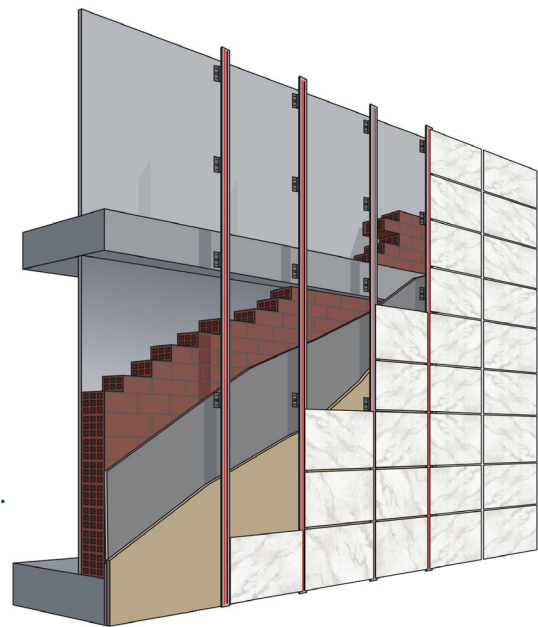
- Simple and effective stainless steel withholding hook device that prevents the Porcelain panels from falling in the event of detachment from the wall adhesive.
- 100% invisible once the façade it's done since it is placed between the Porcelain panel and the façade.
- It can be used with either 6mm or 12mm Panoramic slabs.
- It includes a mechanical safety factor for large format Porcelain panels, which allows for higher installation.
- Economical solution.
- DIY – No training necessary.
- 25-Year Installation warranty available from main thin set manufactures (Custom / Mapei).



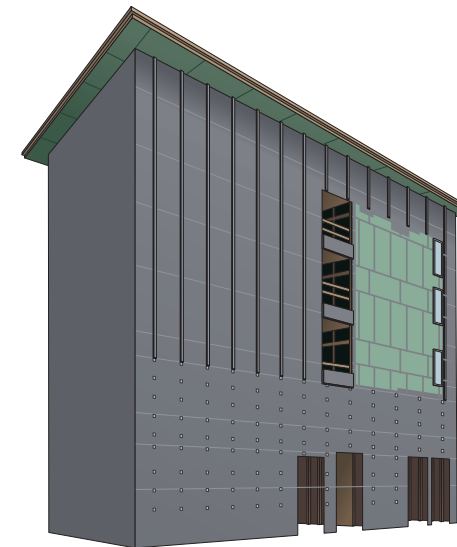
5. PANORAMIC FORMULA™ - (HIDDEN FIXATION)

- This system was specially developed to be used in conjunction with thin porcelain panels. The system basically consists on an Aluminum-T profile where the Porcelain panel is supported by a longitudinal chemical elastic coating.
- All system including chemicals components have been tested in certified laboratories obtaining satisfactory result for such purpose.
- The Panoramic Formula system allows for a concealed fastening with no need of mechanical fixations, providing excellent aesthetic looks with the heist safety standards.
- The system is designed to be used for 6mm Panoramic panels.
- Mostly used on residential, low commercial & low hospitality (typically 1 to 4 stories high).
- It is an economical system and an easy method of installation.

PANORAMIC FORMULA WALL RENDERING



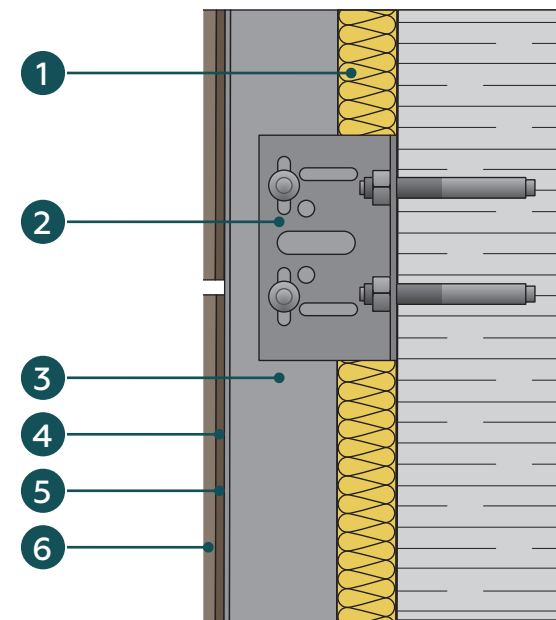
- ① Adhesive for Façade
- ② Double-Sided Tape
- ③ Panoramic Porcelain Slab
- ④ Vertical-T Profile



- If necessary, on site installation training / assistance could be provided on a project-by-project basis.
- Quotes and engineering services provided on a project by project case.

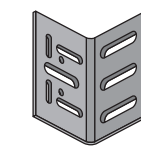


FORMULA SYSTEM VERTICAL SECTION

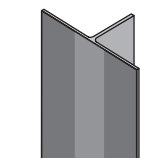


- ① Thermal Insulation
- ② Retention Bracket
- ③ Vertical-T Profile
- ④ Adhesive For Façade
- ⑤ Double Sided Tape Adhesive
- ⑥ Panoramic Porcelain Slab

COMPONENT DETAILS



RETENTION BRACKET

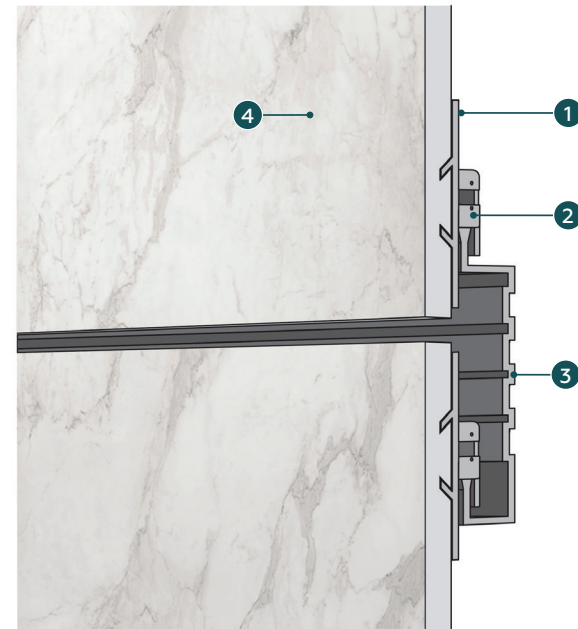
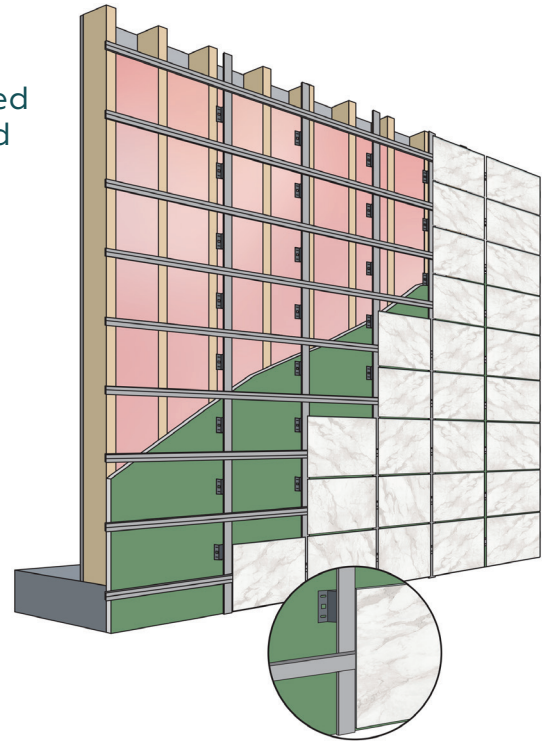


VERTICAL-T PROFILE

6. PANORAMIC MECHANIX™ - 6MM & 12MM PANORAMIC PANELS

- Panoramic Mechanix (Double Groove) it's a mixed hidden longitudinal fastening system developed exclusively for Slim Porcelain panels.
- Porcelain panels are industrially mechanized with a double 45° groove in a longitudinal way (top and bottom of the panel) of it's backside. Aluminum profiles are inserted and fixes industrially using tested structural adhesives.
- Aluminum mechanism will become invisible due to the way the mechanical parts are fixed to the substrate and the panel.
- The system provides lighter façades with top mechanical performance.
- Possibility to replace panels after installation if need it.
- System designed to be used for 6mm and 12mm Panoramic panels.
- This ventilated façade system provides mechanical fixation and can be used in either residential, low commercial or high rise projects.
- If necessary, on site installation training/assistance could be provided.
- Engineering services upon project confirmation.

MECHANIX DOUBLE GROOVE WALL RENDERING

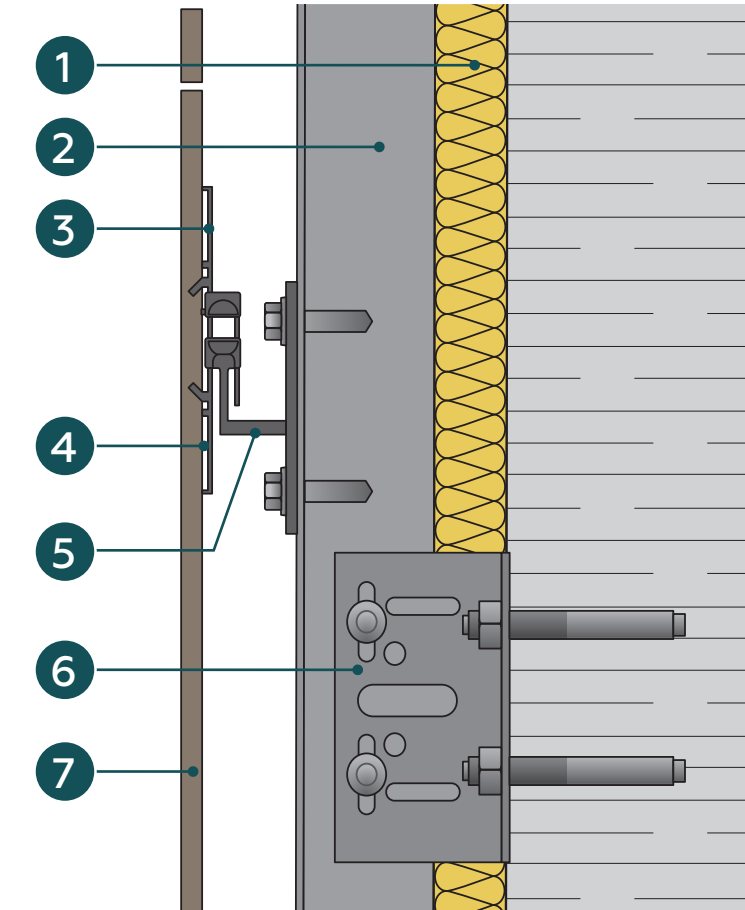


- 1 Lock Profile
- 2 Hook Profile
- 3 Horizontal Profile
- 4 Panoramic Porcelain Slab

MECHANIX SYSTEM

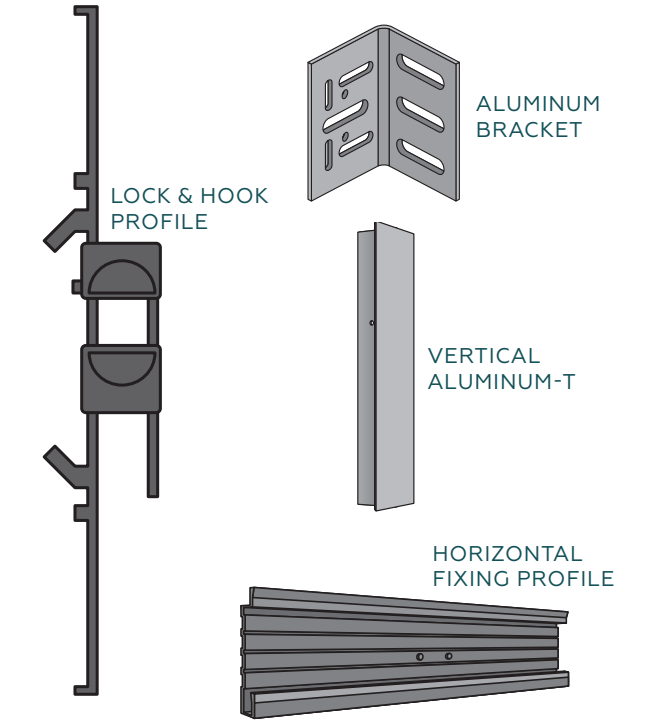


MECHANIX SYSTEM DETAILS AND SECTION

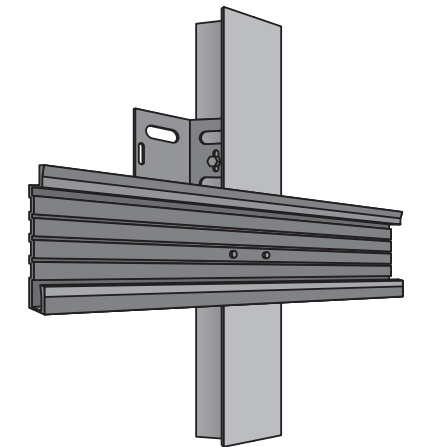


- 1 Thermal Insulation
- 2 Vertical Aluminum-T
- 3 Aluminum Lock Profile
- 4 Aluminum Hook Profile
- 5 Horizontal Mechanix Profile
- 6 Aluminum Bracket
- 7 Panoramic Porcelain Slab

COMPONENT DETAILS



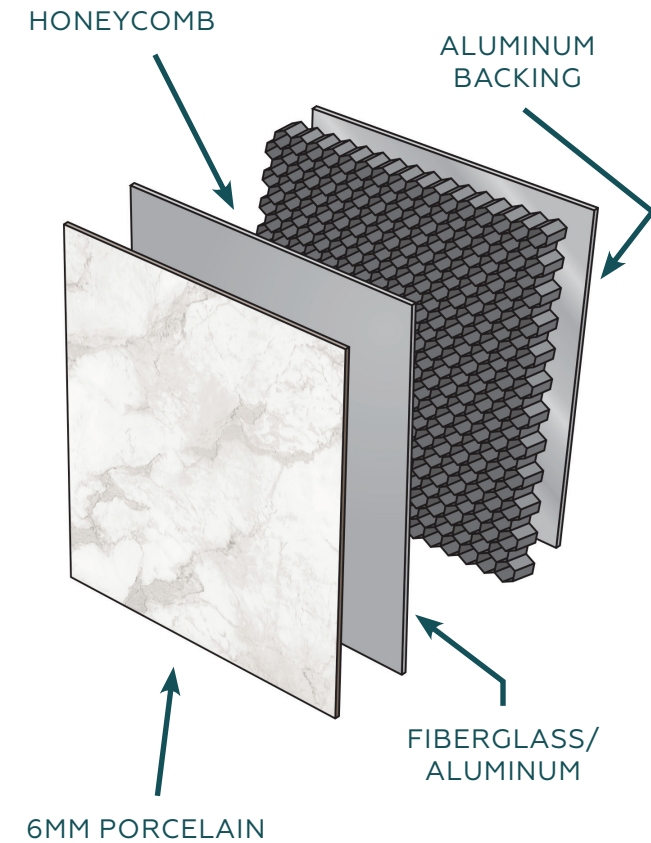
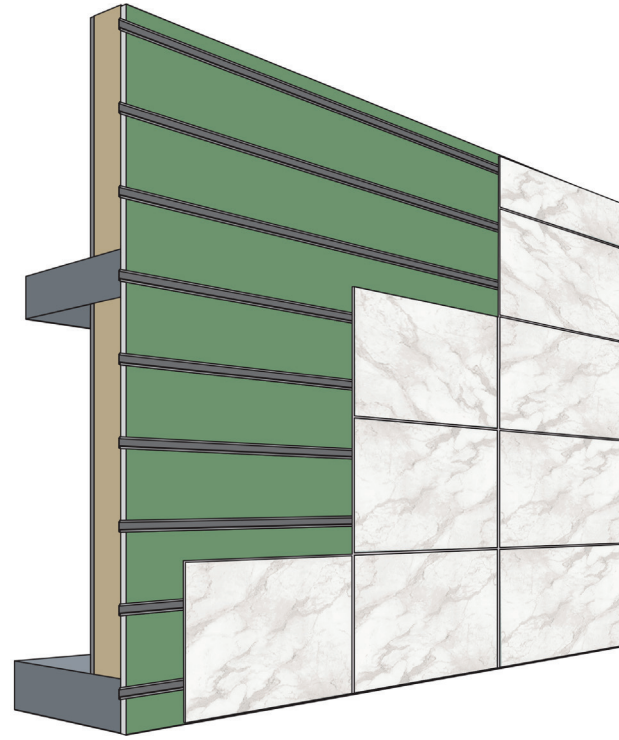
ASSEMBLED COMPONENTS



7. PANORAMIC LINX™

- Panoramic Linx combines excellent structural qualities in conjunction with stunning aesthetics making it an exceptional cladding solution.
- Panoramic Linx offers a façade solution for large Porcelain panels with the strong and rigid resistance of honeycomb panel systems.
- The system is designed to be used for 6mm Panoramic Panels.
- Lightweight and easy method of installation.
- Best system for extreme weather areas such hurricane zones, etc.
- Testing available. NOA approved, missile impact test approved, etc.

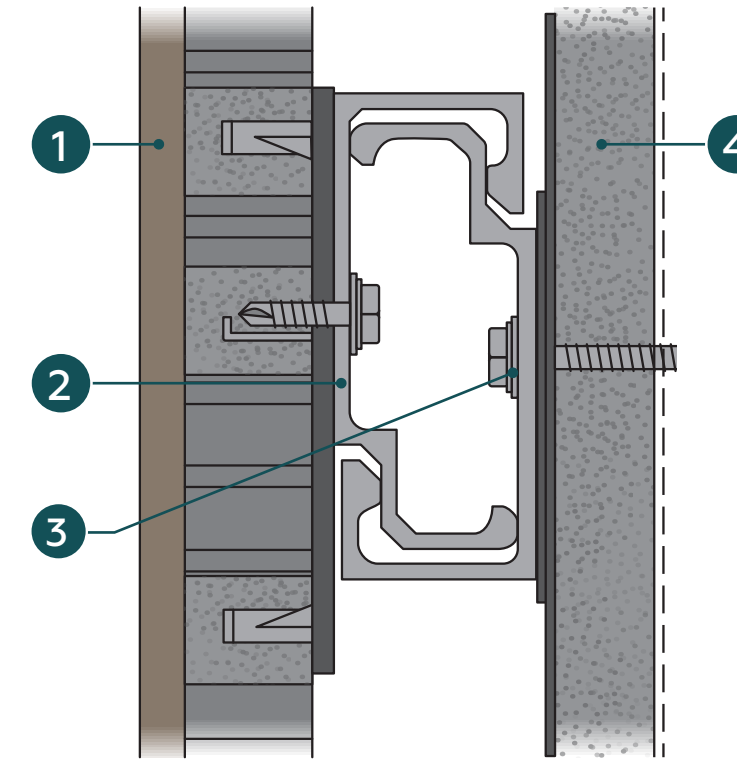
PANORAMIC LINX WALL RENDERING



- Possibility to offer mitered returns on corners.
- This ventilated façade system provides a combination of mechanical and chemical fixation and can be used in either residential, low commercial or high rise projects.

- Installation services and trainings available on a project by project basis.
- Quotes and engineering services provided.

DETAIL AND COMPONENTS



- | | |
|---|--|
| 1 Panoramic Porcelain Slab | 3 Field Attach Mating Interlocking Channel |
| 2 Factory Attached Interlocking Channel | 4 Sheathing |

COMPONENT DETAILS

