

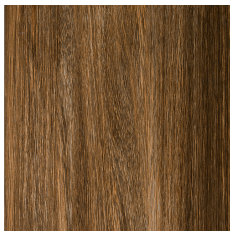
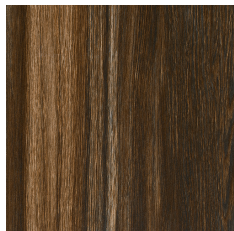
**MARAZZI**  **USA**

the fine art of porcelain stoneware

**(harmony™)**

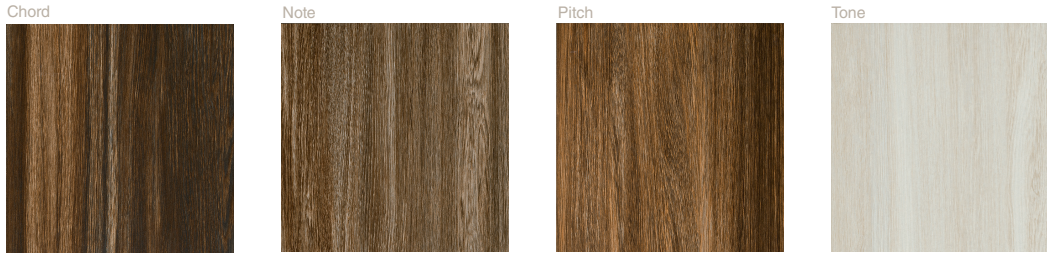
color body porcelain stoneware  
rectified |  printing technique

Made In The USA





Made In The USA



- Floor Tile
- Wall Tile
- 3d Printing Technique
- Rectified Tile
- Suitable for Outdoors
- Slight Variation
- Frost Resistant
- Abrasion Resistance
- DCOF (Wet Areas)  
(Minimum 0.42)
- 0.6  
S.C.O.F. (Wet)  
(Valid through 12-31-2013)
- 0.9  
S.C.O.F. (Dry)  
(Valid through 12-31-2013)
- 21% Minimum  
Pre-Consumer  
Recycled Content
- No VOC

made in the USA



Contributes to LEED Credits

FLOOR TILE		
	6" x 36" R <small>(152.40 cm)</small>	9" x 36" R <small>(22.86 cm)</small>
Thickness	3/8" (10mm)	3/8" (10mm)
Names (colors)		
Chord (Black/Cherry)	ULKK	ULKP
Note (Grey Brown)	ULKL	ULKQ
Pitch (Red Brown)	ULKM	ULKR
Tone (White)	ULKN	ULKS

### ASTM Test Results

Technical Characteristics	ASTM Standards	ASTM Test Results	ASTM Test Methods
Water Absorption	≤ 0.50%	≤ 0.50%	C373
Frost Resistance	As Reported	Resistant	C1026
Scratch Resistance	MOHS 1-10	6.5	MOHS Scale
Breaking Strength	≥ 250 lbf.	≥ 491 lbf.	C648
Facial Dimension	-3.0% < Nominal ≤ 3.0%	Within Standard	C499
Nominal Thickness	≤ 0.04 in (1.02 mm max)	Within Standard	C499
Wedging (squareness)	+/- 0.25% or +/- 0.8 mm**	Within Standard	C502
Warpage (flatness)	+/- 0.40% or +/- 1.8 mm**	Within Standard	C485
Abrasion Resistance	Class 0 - Class V	Class III	C1027
DCOF-Dynamic Coefficient of Friction (Wet Areas Only) <sup>1</sup>	As Reported	Minimum 0.42	DCOF AcuTest <sup>SM*</sup>
SCOF-Static Coefficient of Friction (Dry)	As Reported	0.80 ≤ C.O.F. < 0.90	C1028
SCOF-Static Coefficient of Friction (Wet)	As Reported	0.60 ≤ C.O.F. < 0.70	C1028
Chemical Resistance	Class A - Class E	Class A	C650
Stain Resistance	Class A - Class E	Class A	C1378

<sup>1</sup>Dynamic Coefficient of Friction (DCOF) - Water, oil, grease or other fluids create slippery conditions. When installing floors in areas with exposure to these conditions, a minimum D.C.O.F. value of 0.42 is required. Additionally, extra caution is required with regards to product selection and proper maintenance. Visit [www.tcnatile.com](http://www.tcnatile.com) for complete information regarding the DCOF AcuTest test method and values.

\*DCOF AcuTest is the industry designation for the test procedure contained in ANSI A137.1 Section 9.6, which has been extensively researched, allows for in-situ field measurements, and is in use at tile manufacturing facilities. It was so named to distinguish it from other DCOF measurements using different instruments and/or protocols.

\*\* Whichever is less

