



(treverk)

color body porcelain stoneware | digital print technology | rectified



teak

12"x48" - 8"x48" - 6"x48"



white

12"x48" - 8"x48" - 6"x48"

All the best characteristics of color body porcelain stoneware – practical, easy to clean, impervious – combine with the warmth and graining of natural wood, becoming Treverk. Light colors in transparent shades focus attention on the intricate textural details; the multi-sized planks subtly vary from piece to piece, resulting in an amazingly authentic floor or wall.

Treverk's slip-resistant surface texture and high abrasion-resistance qualify it for both residential and commercial installations. No waxing or stripping is required for this wonderful wood imposter.



black

12"x48" - 8"x48" - 6"x48"





M7WP Beige
12"x48" Rectified



M7WW Beige
8"x48" Rectified



M7W2 Beige
6"x48" Rectified



M7WU Black
12"x48" Rectified



M7W0 Black
8"x48" Rectified



M7W6 Black
6"x48" Rectified



M7WN White
12"x48" Rectified



M7WV White
8"x48" Rectified



M7W1 White
6"x48" Rectified



M7WT Wengé
12"x48" Rectified



M7WZ Wengé
8"x48" Rectified



M7W5 Wengé
6"x48" Rectified

technical

ASTM Test Results

Technical Characteristics	ASTM Standards	ASTM Test Results	ASTM Test Methods
Water Absorption	≤ 0.50%	≤ 0.50%	C373
Frost Resistance	As Reported	Resistant	C1026
Scratch Resistance	MOHS 1-10	6.5	MOHS Scale
Breaking Strength	≥ 250 lbf.	≥ 891 lbf.	C648
Facial Dimension	-3.0% < Nominal ≤ 2.0%	Within Standard	C499
Thickness	≤ 0.04 in (1.02 mm max)	Within Standard	C499
Wedging (squareness)	+/- 0.25% or +/- 0.8 mm**	Within Standard	C502
Warpage (flatness)	+/- 0.40% or +/- 1.8 mm**	Within Standard	C485
Abrasion Resistance	Class 0 - Class V	Class IV	C1027
DCOF-Dynamic Coefficient of Friction (Wet Areas Only) [†]	As Reported	Minimum 0.42	DCOF AcuTest SM *
Chemical Resistance	Class A - Class E	Class A	C650
Stain Resistance	Class A - Class E	Class A	C1378

[†]Dynamic Coefficient of Friction (DCOF) - Water, oil, grease or other fluids create slippery conditions. When installing floors in areas with exposure to these conditions, a minimum D.C.O.F. value of 0.42 is required. Additionally, extra caution is required with regards to product selection and proper maintenance. Visit www.tcnatile.com for complete information regarding the DCOF Acutest test method and values.

*DCOF AcuTest is the industry designation for the test procedure contained in ANSI A137.1 Section 9.6, which has been extensively researched, allows for in-situ field measurements, and is in use at tile manufacturing facilities. It was so named to distinguish it from other DCOF measurements using different instruments and/or protocols.

** Whichever is less

Floor Tile

Wall Tile

Modular Tile

Rectified Tile

Suitable for Outdoors

Slight Variation

Frost Resistant

Abrasion Resistance

D.C.O.F. (Wet Areas)
(Minimum 0.42)

40% Minimum Pre-Consumer
Recycled Content

No VOC



Contributes to
LEED Credits



M7WQ Capuccino
12"x48" Rectified



M7WX Capuccino
8"x48" Rectified



M7W3 Capuccino
6"x48" Rectified



M7WR Teak
12"x48" Rectified



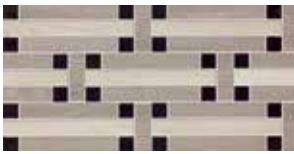
M7WY Teak
8"x48" Rectified



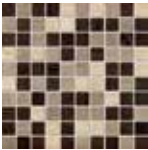
M7W4 Teak
6"x48" Rectified



M7W7 White/Cappuccino/
Black
12"x12" Mosaic



M7XC White/Cappuccino/
Black
12"x24" Decoro Mix



M7W8 Beige/Teak/Wengé
12"x12" Mosaic




M7XD Beige/Teak/Wengé
12"x24" Decoro Mix


SPECIAL ORDER

(Please contact your Marazzi Architectural Customer Service Representative for more details. Minimum quantities may apply.)



packaging

	Sizes	Pcs	Sq. Ft.	Weight (lbs.)	Thickness
Modular Tile	6" x 48" R	6	11.63	58	10.5 mm
Modular Tile	8" x 48" R	3	7.75	38	10.5 mm
Modular Tile	12" x 48" R	3	11.63	59	10.5 mm
Mosaic	12" x 12"	4		18	Compatible
Decoro Mix	12" x 24"	4		44	Compatible

	Sizes	Ctn	Sq. Ft.	Weight (lbs.)
Modular Tile	6" x 48"	22	255.86	1286
Modular Tile	8" x 48"	40	310.00	1539
Modular Tile	12" x 48"	20	232.60	1181



American Marazzi Tile, Inc.
Headquarters & Manufacturing Plant

359 Clay Road East
Sunnyvale, Texas 75182

T 972.226.0110
F 972.226.5629
www.marazzitile.com
contact@marazzitile.com



Color and other aesthetic features shown are as close as the limitation of the printing process will allow. We have tried to make this brochure as comprehensive and factual as possible. We reserve the right, however, to make changes at any time, without notice, in colors, materials, packaging, specifications and availability. Since some information may have been updated since time of printing, please check with American Marazzi Tile Customer Service for details.